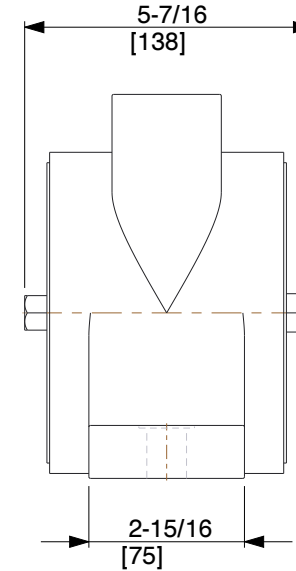
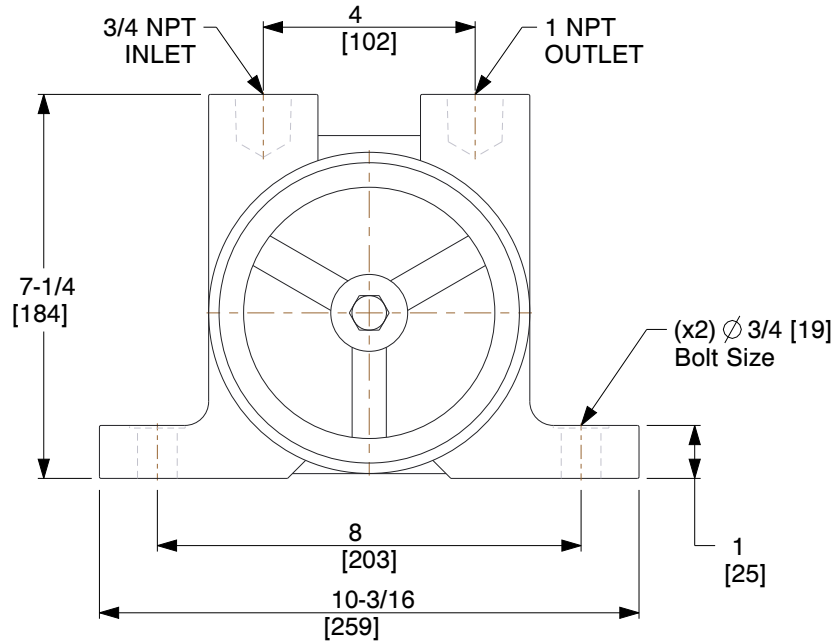


Force Rating	1050 lb.	Max. Pressure	80 psi
Bin Weight Capacity	10,500 lb.	Max. Temp.	350 °F
Speed @ 80 psi	4000 VPM	Speed @ 60 psi	3600 VPM
dB @ 80 psi	83	dB @ 60 psi	-
CFM @ 80 psi	26	CFM @ 60 psi	21



NOTES:

1. MUFFLER: 6F601
2. DUTY: Continuous
3. VIBRATOR TYPE: Turbine
4. BEARING TYPE: Oversized
5. HOUSING MATERIAL: Cast Iron
6. MOUNTING PLATE: Sold Separately
7. STANDARDS: CE Certified, ATEX Certified

COMPONENT	Pneumatic Vibrator
------------------	--------------------



100 Grainger Parkway, Lake Forest, Illinois 60045-5201
 1-(800) GRAINGER, 1-(800) 472-4643, (847) 535-1000
 www.grainger.com

This file and any associated information and specifications are provided for reference and evaluation purposes only, and is subject to change without notice. Grainger makes no representations, warranties or guarantees as to the appropriateness, accuracy, completeness, or suitability for any purpose, of the file, information or specifications. You are solely responsible for the use of the file, information or specifications.

This drawing is the property of GRAINGER. It contains confidential, proprietary information that is GRAINGER property. Do not disclose to or duplicate for others except as authorized by GRAINGER.

SCALE 0.276

6L758 PNEUMATIC VIBRATOR, 1050 LB, 3600 VPM, 80 PSI
--

UNIT
INCH [MM]
SHEET
1 of 1