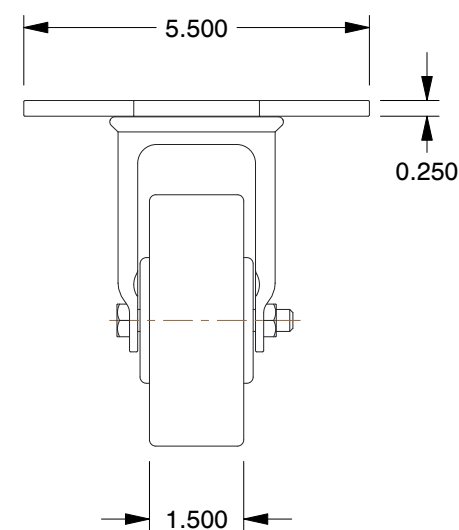
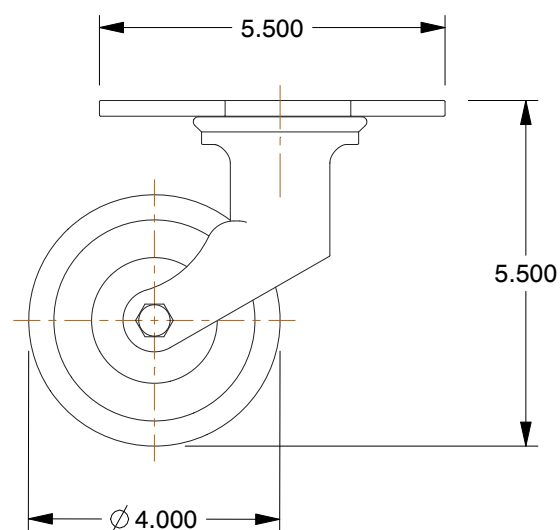
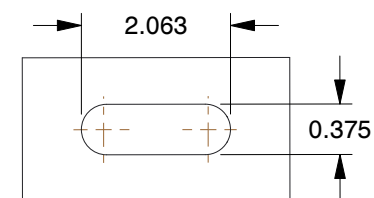


MOUNTING HOLE DETAILS



NOTES:

1. CASTER SUB-TYPE : Kingpinless Swivel
2. CASTER LOAD RATING RANGE : Light-Medium Duty
3. LOAD RATING : 550 lb.
4. CASTER WHEEL/TREAD MATERIAL : Phenolic
5. CASTER CORE MATERIAL : Phenolic
6. WHEEL COLOR : Black
7. CASTER WHEEL BEARINGS : Roller
8. CASTER FRAME MATERIAL : Steel
9. MOUNTING BOLT DIA. : 3/8"
10. FRAME FINISH : Polished Zinc
11. CASTER MAX. TEMP. : 250°F
12. CASTER MIN. TEMP. : -65°F

COMPONENT

Plate Caster

UNIT

INCH

SHEET

1 of 1

GRAINGER

100 Grainger Parkway, Lake Forest, Illinois 60045-5201
1-(800) GRAINGER, 1-(800) 472-4643, (847) 535-1000
www.grainger.com

This file and any associated information and specifications are provided for reference and evaluation purposes only, and is subject to change without notice. Grainger makes no representations, warranties or guarantees as to the appropriateness, accuracy, completeness, or suitability for any purpose, of the file, information or specifications. You are solely responsible for the use of the file, information or specifications.

This drawing is the property of GRAINGER. It contains confidential, proprietary information that is GRAINGER property. Do not disclose to or duplicate for others except as authorized by GRAINGER.

SCALE

0.33

5VF68

Triangle Top Plte Kngpnlss Castr, Phnolic