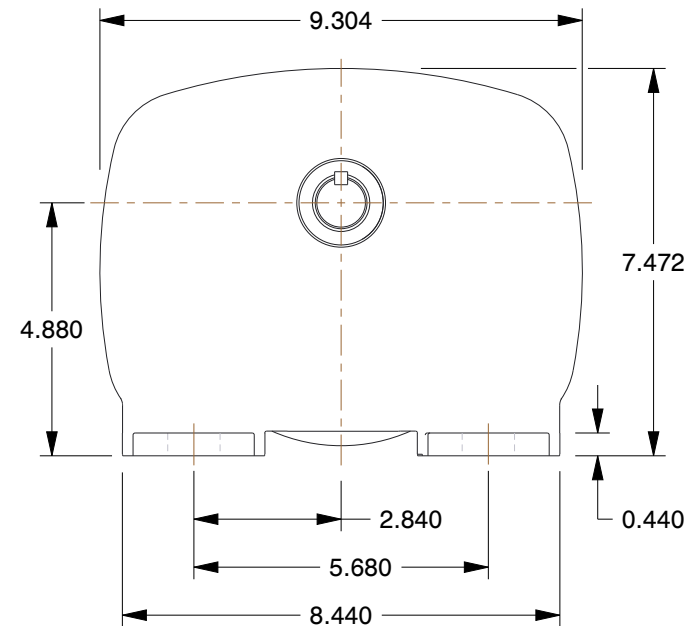


NOTES:

1. BEARINGS: Ball
2. GEAR TYPE: Helical
3. FINISH: Powdered Epoxy Paint
4. HOUSING MATERIAL: Cast Iron
5. WORM GEAR MATERIAL: Bronze
6. PINION MATERIAL: Hardened Steel
7. LUBRICATION: Klubersynth UH1 6-460
8. SHAFT OUTPUT/TYPE: Single Output/Solid
9. GEAR MATERIAL: Hardened and Ground Steel
10. OUTPUT TORQUE (in.-lb.)
 - @ 1/4 HP 107
 - @ 1/3 HP 143
 - @ 1/2 HP 214
 - @ 3/4 HP 320
 - @ 1 HP 427

Speed Reducer Type	C-Face	Max. Output Torque (in.-lb)	427
Shaft Orientation	Parallel/Inline	Overhung Load (lb.)	709
NEMA/IEC Frame	56C	Nominal Output RPM	140
Standards	AGMA	Number of Stages	1
Seal Type	Double Lip	Max. Input HP	1
Rotation	Forward/Reversible	Nominal Ratio	12.5:1
Duty	Standard	Input RPM	1750



COMPONENT	Speed Reducer
-----------	---------------

GRAINGER

100 Grainger Parkway, Lake Forest, Illinois 60045-5201
1-(800) GRAINGER, 1-(800) 472-4643, (847) 535-1000
www.grainger.com

This file and any associated information and specifications are provided for reference and evaluation purposes only, and is subject to change without notice. Grainger makes no representations, warranties or guarantees as to the appropriateness, accuracy, completeness, or suitability for any purpose, of the file, information or specifications. You are solely responsible for the use of the file, information or specifications.

This drawing is the property of GRAINGER. It contains confidential, proprietary information that is GRAINGER property. Do not disclose to or duplicate for others except as authorized by GRAINGER.

SCALE 0.27

Speed Reducer, C-Face, 56C, 17.5:1

4Z617

UNIT

INCH

SHEET

1 of 1