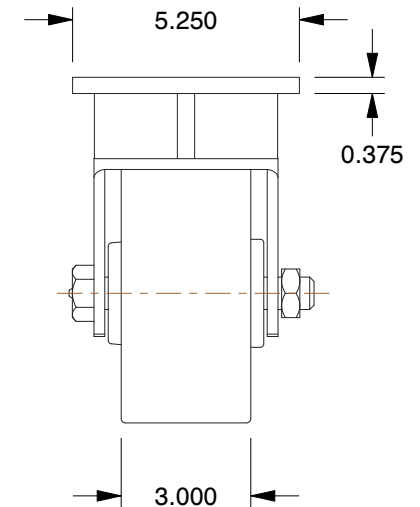
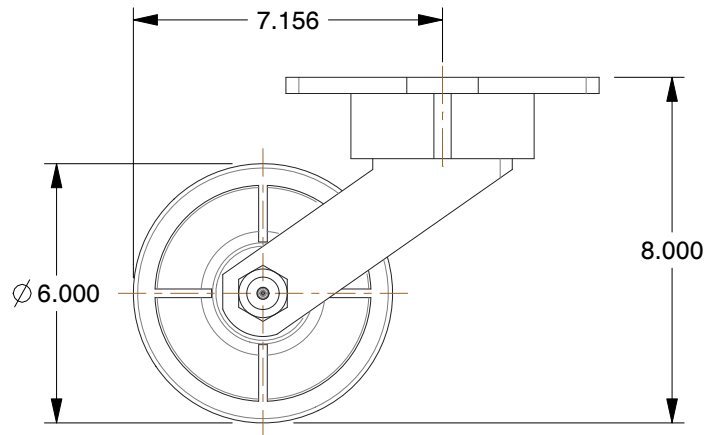
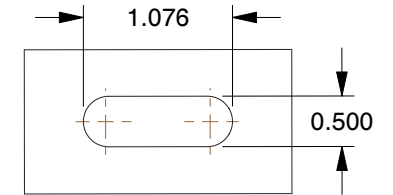


#### MOUNTING HOLE DETAILS



#### NOTES:

1. LOAD RATING : 5400 lb.
2. WHEEL COLOR : Black
3. FRAME FINISH : Zinc Plated
4. CASTER WHEEL BEARINGS : Roller
5. CASTER FRAME MATERIAL : Steel
6. CASTER WHEEL SHAPE : Standard
7. CASTER CORE MATERIAL : Ductile Iron
8. CASTER WHEEL/TREAD MATERIAL : Ductile Iron
9. CASTER LOAD RATING RANGE : Heavy-Duty
10. CASTER PRODUCT GROUP : Kingpinless Caster

COMPONENT	Plate Caster		
1VJG6	UNIT		
	INCH		
	SHEET		
	1 of 1		

**GRAINGER**

100 Grainger Parkway, Lake Forest, Illinois 60045-5201  
 1-(800) GRAINGER, 1-(800) 472-4643, (847) 535-1000  
[www.grainger.com](http://www.grainger.com)

This file and any associated information and specifications are provided for reference and evaluation purposes only, and is subject to change without notice. Grainger makes no representations, warranties or guarantees as to the appropriateness, accuracy, completeness, or suitability for any purpose, of the file, information or specifications. You are solely responsible for the use of the file, information or specifications.

This drawing is the property of GRAINGER. It contains confidential, proprietary information that is GRAINGER property. Do not disclose to or duplicate for others except as authorized by GRAINGER.

SCALE 0.23

Kingpinless Swivel Caster, Ductile Iron, 6in, 5400lb