

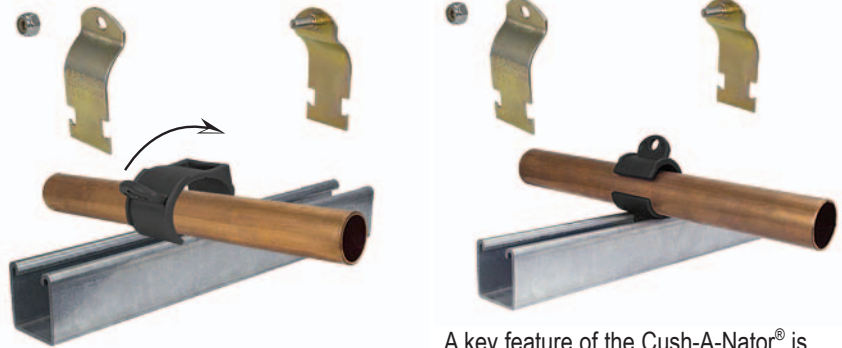
# CUSH-A-NATOR® UNIQUE INSTALLATION

Patent Pending

**Step 1:**

**Step 2:**

Insert the Cush-A-Nator onto the pipe and then use the exclusive "Thumb Drive" to rotate into position.



A key feature of the Cush-A-Nator® is this ability to place the cushion and rotate into position. Perfect for retrofit applications!

Cushioned Clamping

Insulating Clamping

Loop &amp; Hose Clamps

Cush-A-Block

Z-Strut Channels

Beta Clamps

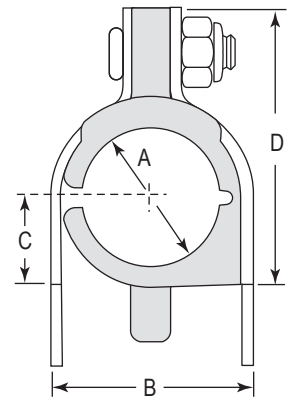
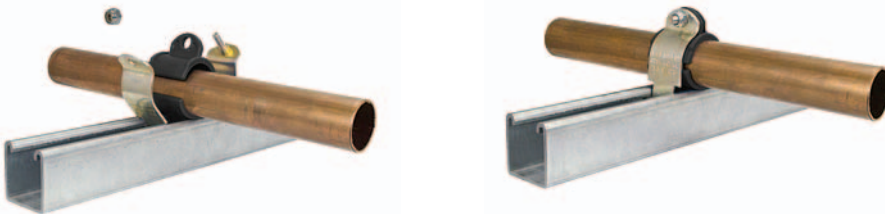
Z-Clamps

Gamma Pads

BRECO Quick Disconnect

**Step 3:**

Add Pipe Clamps and tighten the assembly.



Cush-A-Nator® Standard							
Part No.			O.D. Tube Size	Dimensions (inches)			
Steel	SS304	SS316		A	B	C	D
CN04	CN04SS	CN04S6	1/4"	0.25	0.62	0.27	0.98
CN06	CN06SS	CN06S6	3/8"	0.37	0.82	0.33	1.13
CN08	CN08SS	CN08S6	1/2"	0.50	0.94	0.40	1.34
CN10	CN10SS	CN10S6	5/8"	0.62	1.06	0.46	1.54
CN14	CN14SS	CN14S6	7/8"	0.87	1.31	0.58	1.82
CN18	CN18SS	CN18S6	1 1/8"	1.12	1.57	0.70	2.08
CN22	CN22SS	CN22S6	1 3/8"	1.37	1.82	0.83	2.34
CN26	CN26SS	CN26S6	1 5/8"	1.62	2.07	0.96	2.60
CN34	CN34SS	CN34S6	2 1/8"	2.12	2.57	1.27	3.23

Contact Factory for Additional Sizes

Cush-A-Nator® "Cool Blue" [extended temperature -65°F to 340°F]							
Part No.			O.D. Tube Size	Dimensions (inches)			
Steel	SS304	SS316		A	B	C	D
HT04	HT04SS	HT04S6	1/4"	0.25	0.62	0.27	0.98
HT06	HT06SS	HT06S6	3/8"	0.37	0.82	0.33	1.13
HT08	HT08SS	HT08S6	1/2"	0.50	0.94	0.40	1.34
HT10	HT10SS	HT10S6	5/8"	0.62	1.06	0.46	1.54
HT14	HT14SS	HT14S6	7/8"	0.87	1.31	0.58	1.82
HT18	HT18SS	HT18S6	1 1/8"	1.12	1.57	0.70	2.08
HT22	HT22SS	HT22S6	1 3/8"	1.37	1.82	0.83	2.34
HT26	HT26SS	HT26S6	1 5/8"	1.62	2.07	0.96	2.60
HT34	HT34SS	HT34S6	2 1/8"	2.12	2.57	1.27	3.23

Contact Factory for Additional Sizes