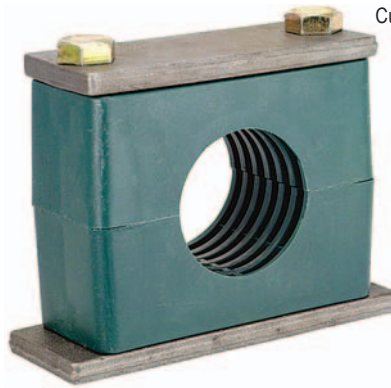
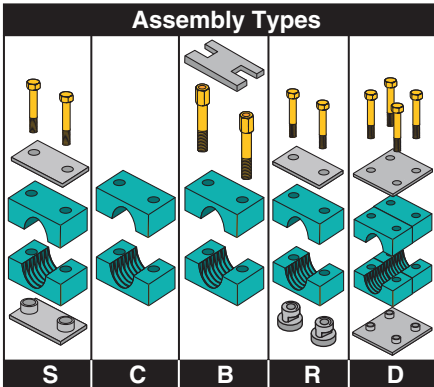


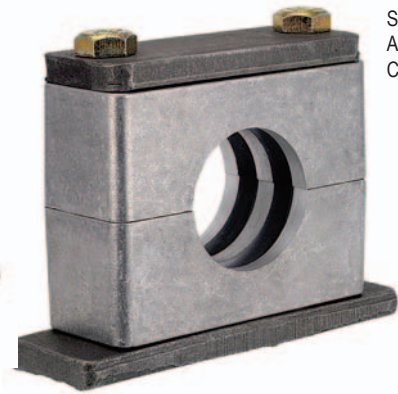


BETA CLAMPS

HEAVY SERIES



Steel w/
Polypropylene
Cushion

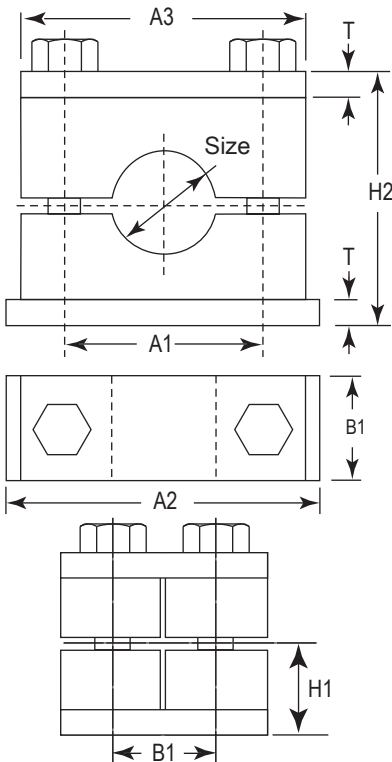


Steel w/
Aluminum
Cushion

BETA HEAVY SERIES

- Recommended systems with greater than 1500 PSI operating pressure, operations with pressure surges, and applications with wide temperature fluctuations.
- Absorbs high levels of shock, noise, and vibration
- Cushions are polypropylene (Green color) or Aluminum.
- Aluminum cushions and are used in higher heat applications up to 500 Degrees.

INSTALLATION - Refer to pages 115-116 for complete installation guide.



Group	Part No.	Tube Size	Pipe Size	Dimensions-inch(mm)						Wt/100	Hex Bolt	
				A1	A2	A3	B1	H1	H2			T
H3	H-3004	1/4" (0.250)	-	1.29 (33)	2.87 (73)	2.16 (55)	1.18 (30)	0.94 (24)	1.88 (48)	0.31 (8)	65	3/8"-16 x 1-3/4"
	H-3006	3/8" (0.375)	-								65	
	H-3007	-	1/8" (0.405)								65	
	H-3008	1/2" (0.500)	-								65	
	H-3009	-	1/4" (0.540)								65	
	H-3010	5/8" (0.625)	-								65	
H4	H-3011	-	3/8" (0.675)	65								
	H-4012	3/4" (0.750)	-	1.77 (45)	3.34 (85)	2.75 (70)	1.18 (30)	1.25 (32)	2.51 (64)	0.31 (8)	83	3/8"-16 x 2-1/4"
	H-4014	-	1/2" (0.840)								82	
	H-4015	7/8" (0.875)	-								83	
	H-4016	1" (1.000)	-								83	
H-4017	-	3/4" (1.050)	83									
H5	H-5020	1 1/4" (1.250)	-	2.36 (60)	3.93 (100)	3.30 (84)	1.18 (30)	1.49 (38)	2.99 (76)	0.31 (8)	104	3/8"-16 x 2-3/4"
	H-5021	-	1" (1.315)								104	
	H-5024	1 1/2" (1.500)	-								103	
	H-5027	-	1 1/4" (1.660)								103	
H6	H-6028	1 3/4" (1.750)	-	3.54 (90)	5.90 (150)	4.52 (115)	1.77 (45)	2.16 (55)	4.33 (110)	0.39 (10)	266	1/2"-13 x 4"
	H-6030	-	1 1/2" (1.900)								276	
	H-6032	2" (2.000)	-								267	
	H-6034	2 1/4" (2.250)	-								266	
	H-6038	2 3/8" (2.375)	2" (2.375)								267	
H-6040	2 1/2" (2.500)	-	264									
H7	H-7044	2 3/4" (2.750)	-	4.80 (122)	7.08 (180)	5.98 (152)	2.36 (60)	2.75 (70)	5.51 (140)	0.39 (10)	510	5/8"-11x 5-1/4"
	H-7046	-	2 1/2" (2.870)								525	
	H-7050	3" (3.000)	-								506	
	H-7056	-	3" (3.500)								495	
	H-7057	3 1/2" (3.500)	-								510	
H8	H-8072	-	4" (4.500)	6.61 (168)	8.86 (225)	8.07 (205)	3.15 (80)	3.94 (100)	7.87 (200)	0.59 (15)	635	3/4"-10 x 7-1/2"
H9	H-9089	-	5" (5.563)	8.07 (221)	10.63 (270)	9.92 (252)	3.54 (90)	4.53 (115)	9.06 (230)	0.59 (15)	625	7/8"-9 x 8-1/4"
	H-9106	-	6" (6.625)	635								
				*For additional sizes contact factory. Note: Add assembly type to part number. Example: H-3004S-SS provides the complete assembly as shown with stainless steel components.								
	SUFFIX			Components	Cushion	Example (complete assembly):						
	NONE			Steel	Polypropylene (green)	H-3004S						
	-AL			Steel	Aluminum	H-3004S-AL						
	-SS			Stainless Steel	Polypropylene (green)	H-3004S-SS						