

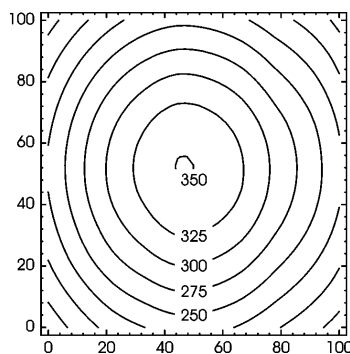
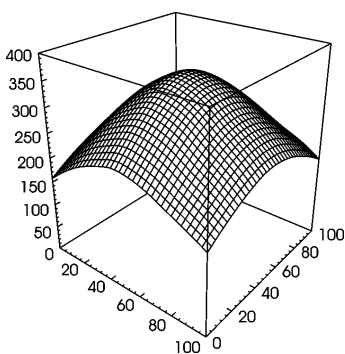
Machine Tube Luminaire



RL70CE - 136 H

connected load	110/230 V; 50/60 Hz
fitted with	1 x compact fluorescent lamp TC-L 36 W neutral white 4000 K
work equipment	electronic ballast
mains lead	connecting terminal
luminaire body	borosilicate glass
material	approx. 1,8 kg (4.0 lbs)
weight (net)	lamp bracket (accessory)
fastening	direct (with louver)
light distribution	IP 67
system of protection	I
class of protection	564 mm (21.5")
total length	395 mm (15.6")
light output	70 mm (2.8")
outside diameter	A with screwed cable gland (not shown)
article no.	619063011

E_{min}: 157 lx
E_m: 256 lx
E_{max}: 350 lx



measuring conditions: d=100cm

