

## FLAT LED LED Flood Light

FLAT LED combines new LED technology with advanced optics, resulting in a luminaire with minimal height, maximum luminous power and intelligent electronics. The intelligent electronics allow FLAT LED to be directly connected to 24V DC or a 24V AC connection, without regard for polarity. Together with a heat-dissipating luminaire housing, FLAT LED provides years of maintenance-free performance. The flat design is the result of innovative optical design and aluminum housing technology. FLAT LED is designed for wide area illumination using state-of-

the-art, high output LEDs with these optics to produce intense light in confined spaces. With an overall depth of only 7/8", the FLAT LED can be installed in a variety of applications and is completely waterproof (IP69K) and maintenance-free. The 60° beam angle and sophisticated optics provide a wide, circular beam of light, evenly illuminating a large area. Perfect for areas that require constant cleaning, FLAT LED's IP69K protection rating allows high-pressure steam cleaning of the luminaire.

BOROSILICATE  
GLASS LENS



HIGH-PRESSURE  
WATERPROOF (IP69K)

HOUSING HAS A DEPTH  
OF ONLY .8IN (20MM)



AVAILABLE IN RECESSED  
OR SURFACE MOUNT

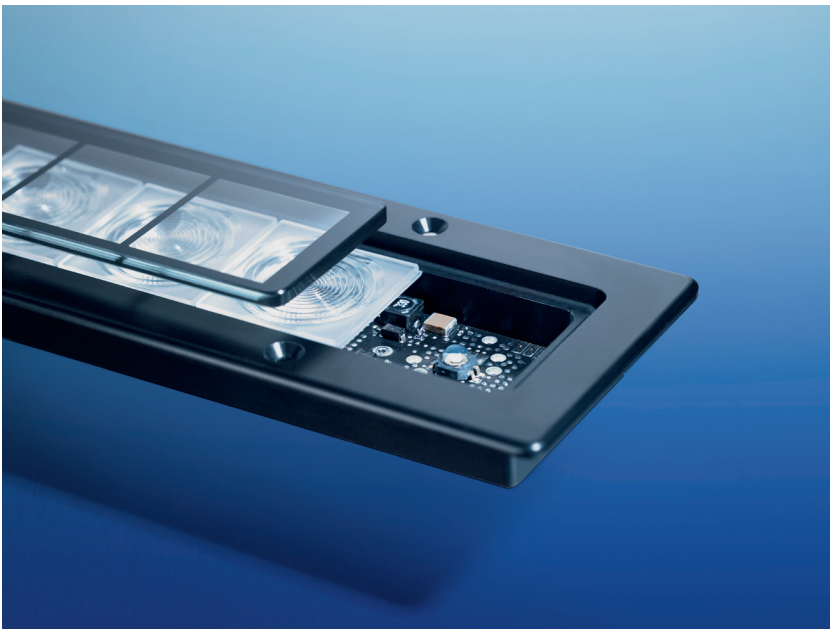


### FEATURES:

- Hard anodized aluminum housing
- 50,000 hours maintenance-free operation
- Precision optics provide 60° beam spread
- High-resistance coating against heat, wear and corrosion
- ESD protection diodes
- Impervious to shock or vibration

SEE BACK FOR MORE DETAILS

**FLAT LED**  
LED Flood Lights



**ORDERING INFORMATION**

PRODUCT DESCRIPTION	WALDMANN MODEL #
FLAT LED, MYAL 6S, 10-40V DC, SURFACE-MOUNT	112560000-00003069
FLAT LED, MYEL 6S, 10-40V DC, RECESSED MOUNT	112560001-00003166
FLAT LED, MYAL 6S, 10-30V AC, SURFACE-MOUNT	112560002-00006272
FLAT LED, MYEL 6S, 10-30V AC, RECESSED MOUNT	112560003-00006273
OPERATING DEVICE: MAX. WATTAGE = 20W TO RUN AT 120-240V, 50/60HZ	209585029-00098930
OPERATING DEVICE: MAX. WATTAGE = 50W TO RUN AT 120V, 50/60HZ	209585030-00000000
OPERATING DEVICE: MAX. WATTAGE = 75W TO RUN AT 120-277V, 50/60HZ	209585031-00000000
MOUNTING OPTION: SWIVEL BRACKET	203081019-00019478