

SP14/24



Industrial Work Shirt

Fabric: 4.25 oz. Poplin

Blend: 65% Polyester/ 35% Cotton

Finish: Pre-cure durable press with soil release and wickable finish

Care: Industrial Wash

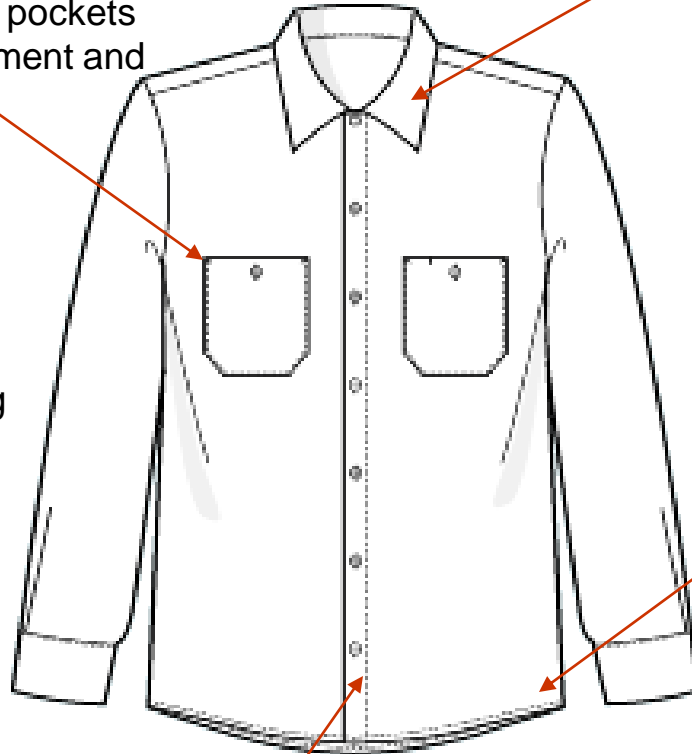
Features: Two piece convertible collar, lined with collar stays. Two button thru, hex-style pockets with angled bartacks, and a bartacked pencil stall in left pocket. Six button front plus gripper at neck.

Colors: Black (BK), Burgundy (BY), Chocolate Brown (CB), Charcoal (CH), Dark Blue (DB), Gray (GY), Khaki (KK), Light Gray (GY), Light Blue (LB), Light Green (LG), Light Tan (LT), Petrol Blue (MB), Navy (NV), Orange (OR), Postman Blue (PB), Royal Blue (RB), Red (RD), Spruce Green (SG), Silver Gray (SV), White (WH), Yellow (YE)

SP14/SP24

Angled bartacks on pockets for added reinforcement and durability.

Melamine buttons used to minimize buttons from breaking



Two piece lined convertible collar with permanent stays maintains crisp look by great shape and appearance

Double turned fishtail hem helps prevent unraveling and gives a nice "stay tucked" appearance

Stitched down front placket keeps dirt from depositing, reduces placket creasing, and provides extra strength for the buttons