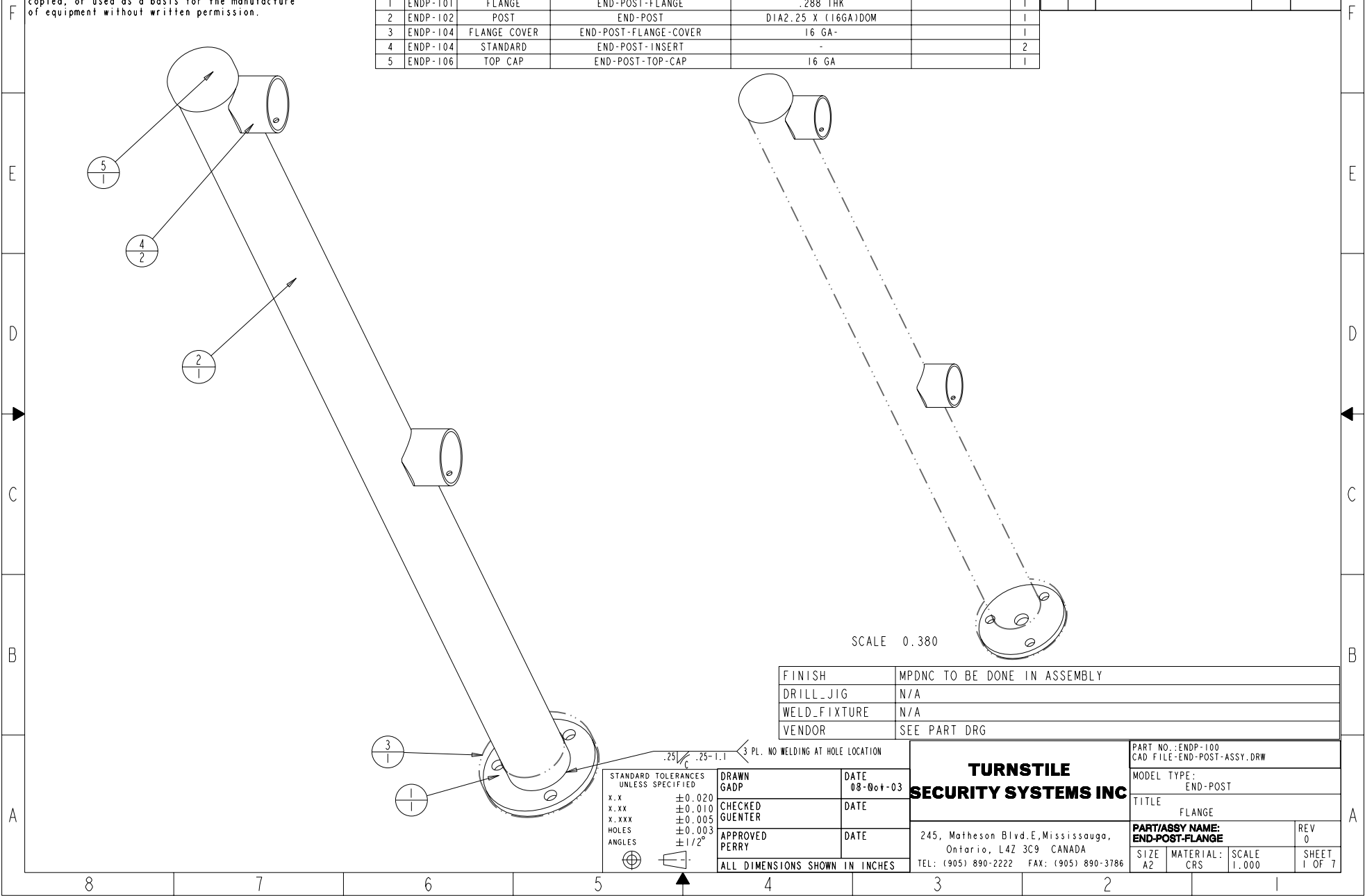


This Document Contains Proprietary Information and is the property of TURNSTILE SECURITY SYSTEMS INC., and shall not be reproduced, copied, or used as a basis for the manufacture of equipment without written permission.

### PARTS LIST

ITEM	PART NO.	DESCRIPTION	MODEL NAME	RAW MATERIAL SIZE	VENDOR INFO	QTY
1	ENDP-101	FLANGE	END-POST-FLANGE	.288 THK		1
2	ENDP-102	POST	END-POST	DIA2.25 X (16GA)DOM		1
3	ENDP-104	FLANGE COVER	END-POST-FLANGE-COVER	16 GA-		1
4	ENDP-104	STANDARD	END-POST-INSERT	-		2
5	ENDP-106	TOP CAP	END-POST-TOP-CAP	16 GA		1

REVISIONS				
ZONE	REV	DESCRIPTION	DATE	ECN
	01	INITIAL RELEASE	--/03	DG



SCALE 0.380

FINISH	MPDNC TO BE DONE IN ASSEMBLY
DRILL_JIG	N/A
WELD_FIXTURE	N/A
VENDOR	SEE PART DRG

STANDARD TOLERANCES UNLESS SPECIFIED	DRAWN GADP	DATE 08-06-03
x.x ±0.020	CHECKED GUENTER	DATE
x.xx ±0.010	APPROVED PERRY	DATE
x.xxx ±0.005	ALL DIMENSIONS SHOWN IN INCHES	
HOLES ±0.003		
ANGLES ±1/2°		

**TURNSTILE SECURITY SYSTEMS INC**  
 245, Matheson Blvd. E. Mississauga, Ontario, L4Z 3C9 CANADA  
 TEL: (905) 890-2222 FAX: (905) 890-3786

PART NO.: ENDP-100 CAD FILE: ENDP-POST-ASSY.DRW			
MODEL TYPE: END-POST			
TITLE: FLANGE			
PART/ASSY NAME: END-POST-FLANGE			REV 0
SIZE A2	MATERIAL: CRS	SCALE 1.000	SHEET 1 OF 7

.25 ±.25-1.1 3 PL. NO WELDING AT HOLE LOCATION