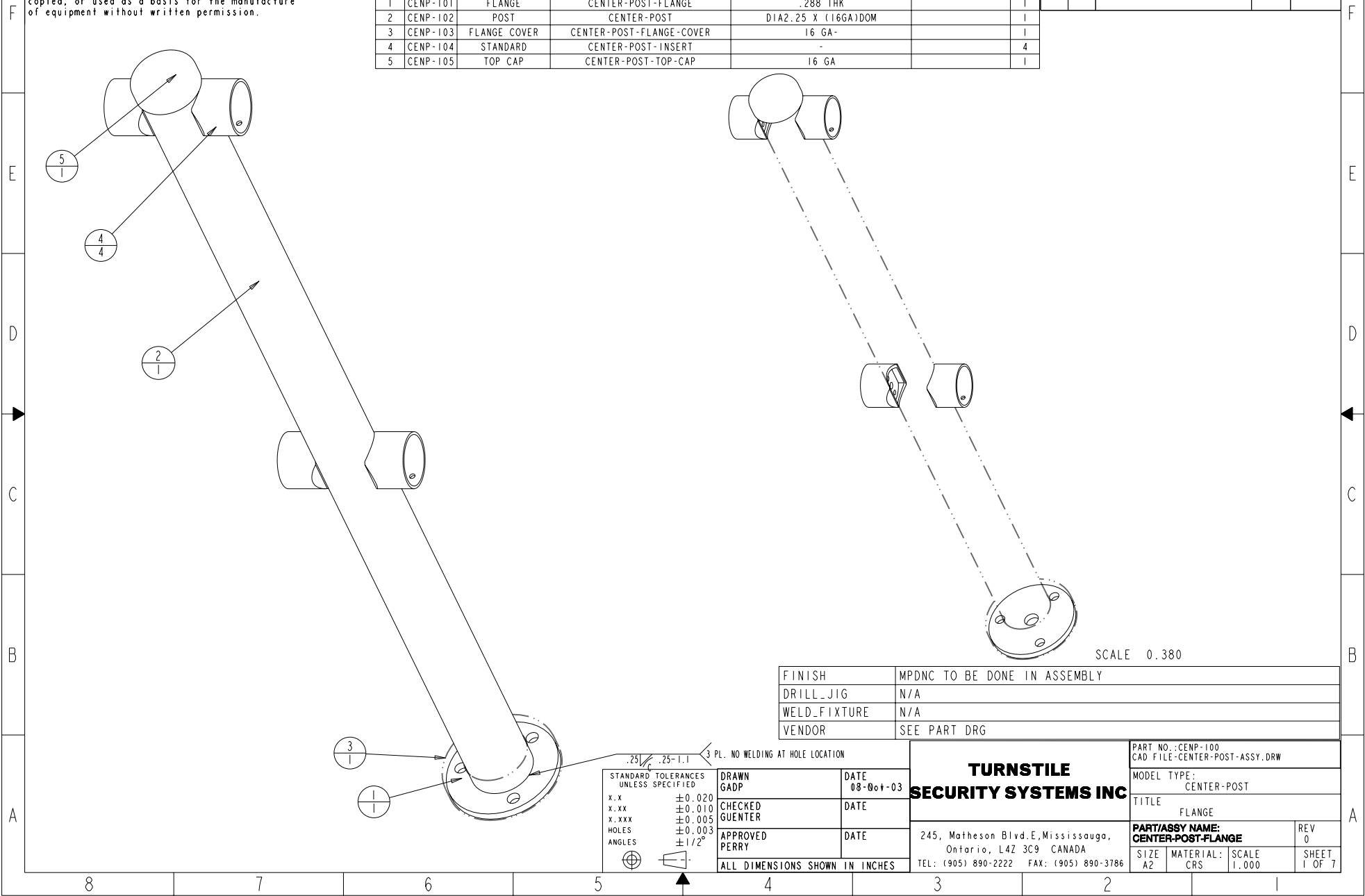


This Document Contains Proprietary Information and is the property of TURNSTILE SECURITY SYSTEMS INC., and shall not be reproduced, copied, or used as a basis for the manufacture of equipment without written permission.

PARTS LIST

ITEM	PART NO.	DESCRIPTION	MODEL NAME	RAW MATERIAL SIZE	VENDOR INFO	QTY
1	CENP-101	FLANGE	CENTER-POST-FLANGE	.288 THK		1
2	CENP-102	POST	CENTER-POST	DIA2.25 X (16GA)DOM		1
3	CENP-103	FLANGE COVER	CENTER-POST-FLANGE-COVER	16 GA-		1
4	CENP-104	STANDARD	CENTER-POST-INSERT	-		4
5	CENP-105	TOP CAP	CENTER-POST-TOP-CAP	16 GA		1

REVISIONS				
ZONE	REV	DESCRIPTION	DATE	ECN
	01	INITIAL RELEASE	--/03	DG



FINISH	MPDNC TO BE DONE IN ASSEMBLY
DRILL_JIG	N/A
WELD_FIXTURE	N/A
VENDOR	SEE PART DRG

STANDARD TOLERANCES UNLESS SPECIFIED	
x.x	±0.020
x.xx	±0.010
x.xxx	±0.005
HOLES	±0.003
ANGLES	±1/2°
.25 \sqrt{R} .25-1.1 3 PL. NO WELDING AT HOLE LOCATION 	
DRAWN GADP	DATE 08-06-03
CHECKED GUENTER	DATE
APPROVED PERRY	DATE
ALL DIMENSIONS SHOWN IN INCHES	

TURNSTILE SECURITY SYSTEMS INC
 245, Matheson Blvd. E, Mississauga, Ontario, L4Z 3C9 CANADA
 TEL: (905) 890-2222 FAX: (905) 890-3786

PART NO.: CENP-100 CAD FILE: CENTER-POST-ASSY.DRW			
MODEL TYPE: CENTER-POST			
TITLE: FLANGE			
PART/ASSY NAME: CENTER-POST-FLANGE			REV 0
SIZE A2	MATERIAL: CRS	SCALE 1.000	SHEET 1 OF 7