

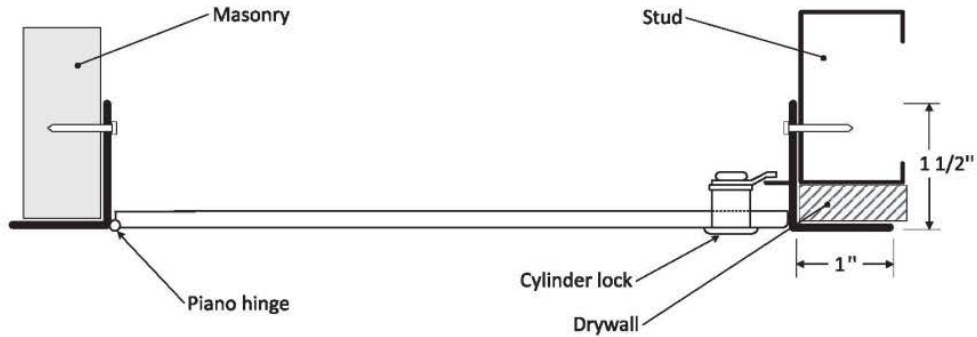


**MEDIUM SECURITY ACCESS DOOR**

FOR ALL SURFACE TYPES

1UEV7 - 1UEV8 - 1UEV9 - 1UEX2

INSTALLATION

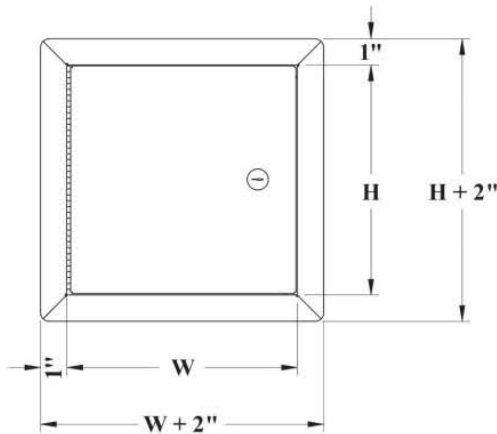


DIMENSIONS AND APPEARANCE

LEED ready: This product contributes to LEED® credits.

PRODUCT CODE	DOOR SIZE W x H inches (MM)	NUMBER OF LOCKS	WEIGHT LBS KG	
1UEV7	12 x 12 (304 x 304)	1	6	2.7
1UEV8	16 x 16 (406 x 406)	1	7	3.2
1UEV9	18 x 18 (457 x 457)	1	11	5
1UEX2	24 x 24 (609 x 609)	1	19	8.6

Rough wall opening is door size + 1/4" or + 6mm



DESCRIPTION AND MATERIAL SPECIFICATION

**Material:** 14 gauge galvalume steel

**Hinge:** continuous piano type

**Lock / latch:** key operated cylinder cam latch

**Finish:** high quality white powder coat primer

**Packaging:** individually wrapped, 1 per box



**FOR CUSTOM SIZES AND DIFFERENT LOCKING OPTIONS,**

**PLEASE CALL YOUR LOCAL GRAINGER BRANCH.**