

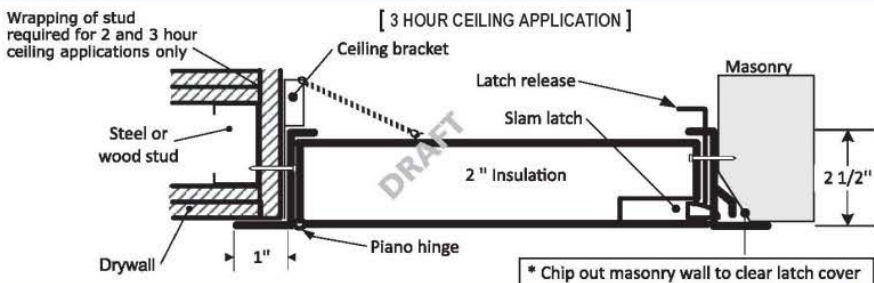


FIRE RATED INSULATED ACCESS DOOR

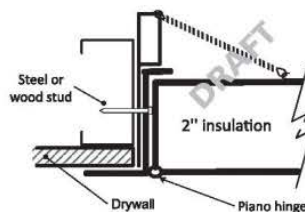
FOR ALL SURFACE TYPES

16M205 - 16M206 - 5YL98 - 5YL99 - 2VE76 - 2VE77 - 5YM01

INSTALLATION: WALLS AND CEILINGS



[1 HOUR CEILING APPLICATION]



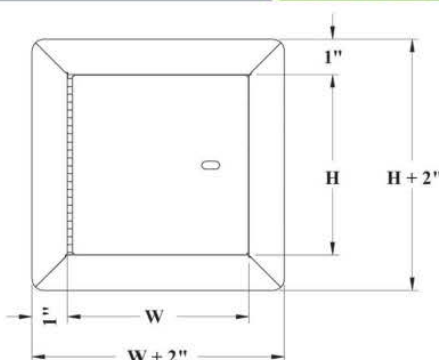
Authorities Having Jurisdiction (AHJ) should be consulted in all cases as to the particular requirements covering the installation and use of fire rated access doors.

DIMENSIONS AND APPEARANCE

PRODUCT CODE	DOOR SIZE W x H inches (MM)	NUMBER OF LOCKS	WEIGHT	
			LBS	KG
16M205	8 x 8 (203 x 203)	1	7	3.2
5YL98	12 x 12 (304 x 304)	1	10	4.5
5YL99	16 x 16 (406 x 406)	1	14	6.4
2VE76	18 x 18 (457 x 457)	1	17	7.7
5YM01	22 x 30 (558 x 762)	1	30	13.6
2VE77	22 x 36 (558 x 914)	2	34	15.5
16M206	24 x 24 (609 x 609)	1	28	12.7

Rough wall opening is door size + 1/4" or + 6mm
 *Not available for ceiling rating (maximum 24"x36")

LEED ready: This product contributes to LEED® credits.



DESCRIPTION AND MATERIAL SPECIFICATION

FIRE RATING: For installation in vertical wall assemblies:
 CERTIFIED TO STANDARDS: UBC 7-2 (1997), UL 10B (1997), UL 10B (2009), NFPA 252 (2003), NFPA 252 (2008), NFPA 252 (2012), CAN/ULC S104 (R1985), CAN/ULC S104 (2010).
 RATING ACHIEVED: 3 hours, neutral/negative pressure.
 MAXIMUM SIZE: 48" wide x 48" high (1219 mm x 1219 mm). Maximum area of 2304 in². Tolerance on height and width limitation is ± 3" (76 mm) as long as the area does not exceed 2304 in².
 TEMPERATURE RISE: 250°F (121°C) after 30 min. 450°F (232°C) after 60 min.

FIRE RATING: For installation in horizontal ceiling assemblies:
 CERTIFIED TO STANDARDS: ASTM E119 (2012), CAN/ULC S101 (2007).
 RATING ACHIEVED: 3 hours in non-combustible construction. 1 hour in combustible construction.
 MAXIMUM SIZE: 24" x 36" (hinges & latch on 36" long sides) (610 mm x 914 mm). Tolerances on dimension limitations are ± 3" (76 mm) as long as the area does not exceed 864 in².
 TEMPERATURE RISE: Not applicable.

- Material:** 16 gauge cold rolled steel frame and 20 gauge galvalneal steel door
- Insulation:** mineral wool
- Hinge:** continuous piano hinge
- Lock / latch:** self latching tool-key operated slam latch and/or ring operated slam latch, both included
- Inside panel release:** standard on all doors over 12" x 12"
- Automatic panel closer:** standard on all doors
- Finish:** high quality white powder coat primer
- Packaging:** individually wrapped, 1 per box



**FOR CUSTOM SIZES AND DIFFERENT LOCKING OPTIONS,
 PLEASE CALL YOUR LOCAL GRAINGER BRANCH.**