

ABANAKI CORPORATION
 17387 Munn Road
 Chapin Falls, OH 44023
 Phone: (440) 543-7400
 Fax: (440) 543-7404
 1-800-358-5KIM (7546)
 www.abanaki.com

Tote-It® 2''

Installation and Maintenance Instructions

Your Abanaki Tote-It® 2'' is shipped in one box, with these items:

1. Base Unit.
2. Stabilizer Bar & Tail Pulley.
3. Belt.

* (If trough heaters are purchased, they are pre-installed on underside of discharge troughs on base unit)

Step 1. Temporarily mount the Tote-It® on a clean flat surface high enough above floor level (belt center plus 12") to permit assembly of stabilizer bar and belt.

Step 2. Loosen nuts and washers on stabilizer bar. Slide stabilizer bar into the slotted frame on the bottom of the unit, making sure that the fasteners are on the outside of the slot. (See Fig. 1) Slide stabilizer bar as far up as possible. Lock bar temporarily in place by tightening top nut and washer assembly.

Step 3. Install bottom tail pulley on stabilizer bar. See figure 2 when a steel belt is used. See figure 3 when an Elastomer belt is used.

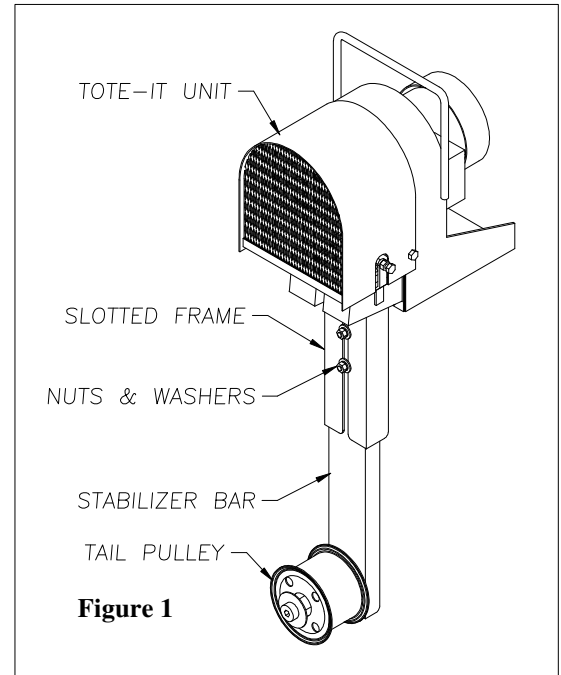


Figure 1

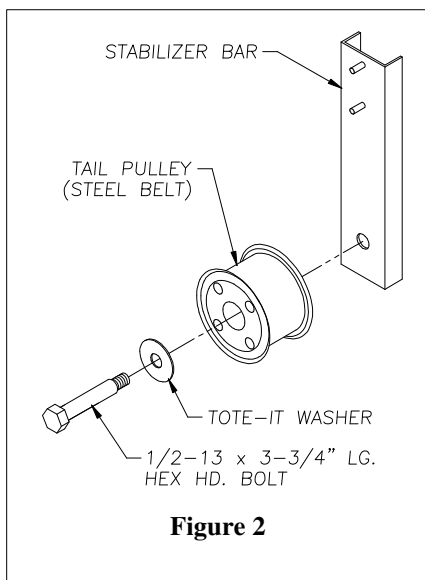


Figure 2

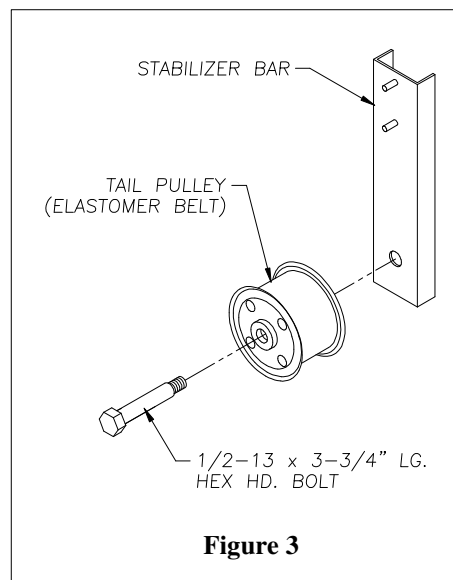


Figure 3

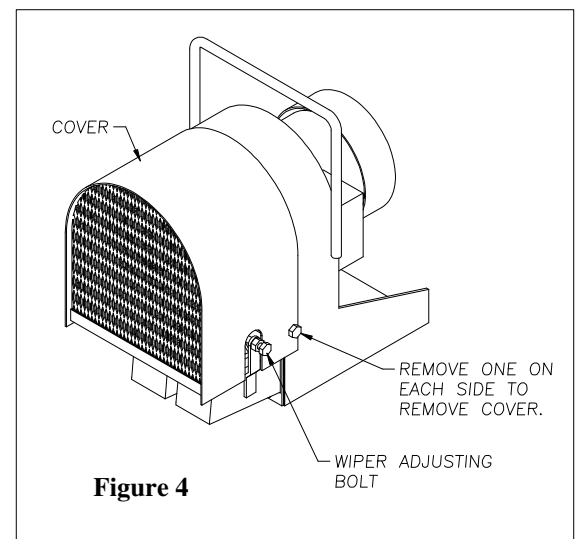
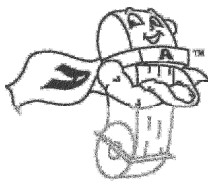


Figure 4

Step 4. Remove the cover by unbolting the two 1/4-20 bolts, one on each side, and lift off. (See Fig. 4)

Step 5. Unscrew the wiper adjusting screw as far as possible without removing it. (See Fig. 4)

Step 6. Remove the belt from its carton. If it is metal, unroll slowly, being careful not to dent or crease. (Abanaki recommends the use of gloves when handling metal belts.)



ABANAKI CORPORATION
17387 Munn Road
Chagrin Falls, OH 44023
Phone: (440) 543-7400
Fax: (440) 543-7404
1-800-358-5KIM (7546)
www.abanaki.com

Tote-It® 2''

Installation and Maintenance Instructions

Step 7. Hold belt with both hands about 9" from the top and gently bend it into a large loop. Insert the belt through the wiper blades, troughs and over the head pulley. Lower it in place onto the head pulley, making sure it is centered. (See Fig. 5)

Step 8. Gently lower the belt until the bottom loop hangs beneath the tail pulley.

Step 9(A). Metal belt units only.

Loosen the top stabilizer fasteners and gently lower the stabilizer bar until:

1. A black felt marker line on the stabilizer bar shows just below the bottom edge of the slotted frame (See Fig. 6), and/or
2. The belt supports the tail pulley with the 1/2" bolt shaft in the center of the tail pulley hole. (See Fig. 7)

Note: The stabilizer bar should not be tensioning the belt. The only pressure on the belt should be the weight of the tail pulley.

3. Tighten both sets of fasteners.

Step 9(B). Elastomer belt units only.

Loosen the top stabilizer fasteners and gently lower the stabilizer bar until the belt is taut. Tighten both sets of fasteners.

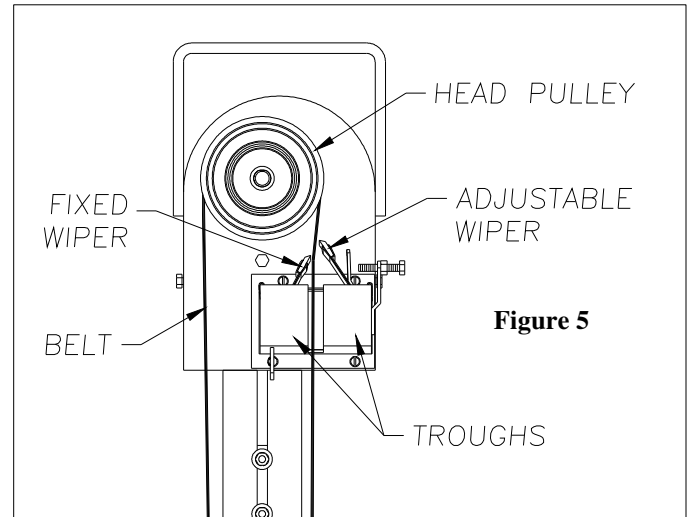


Figure 5

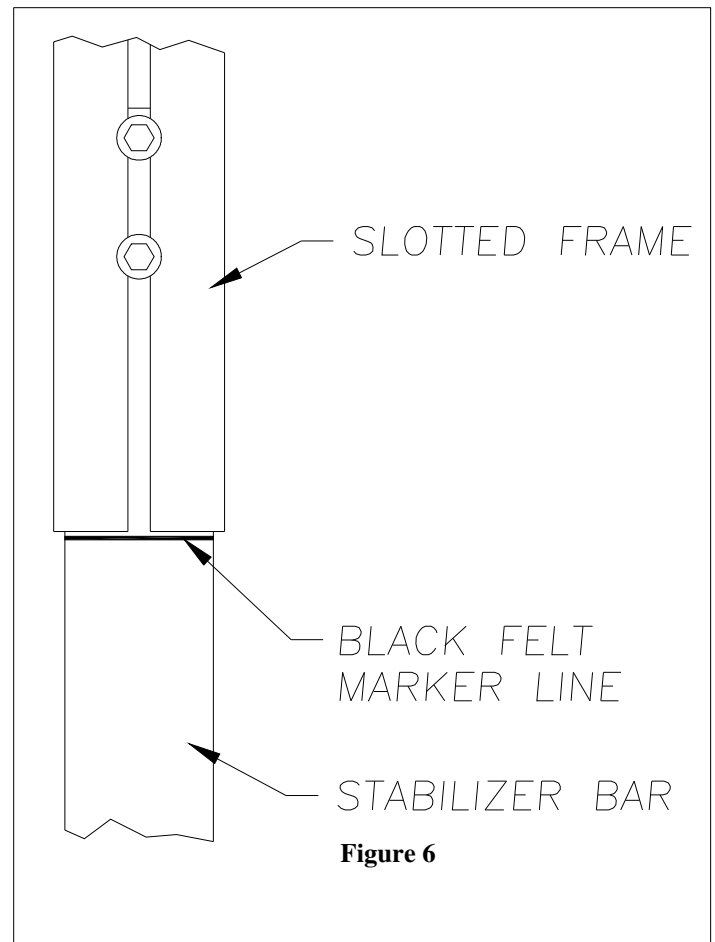


Figure 6

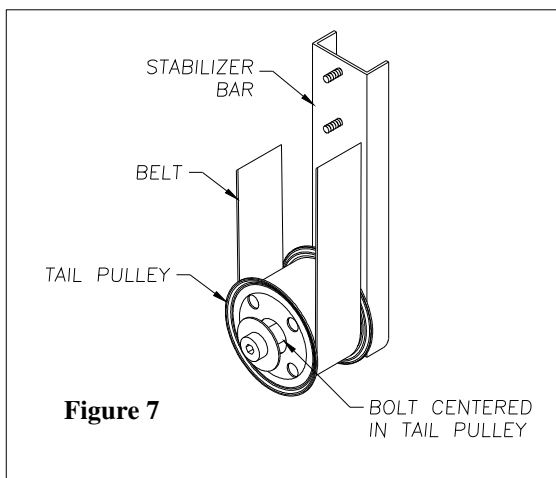
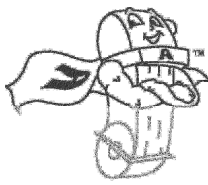


Figure 7



ABANAKI
CORPORATION
17387 Munn Road
Chagrin Falls, OH 44023
Phone: (440) 543-7400
Fax: (440) 543-7404
1-800-358-5KIM (7546)
www.abanaki.com

Tote-It® 2''

Installation and Maintenance Instructions

Step 10. Check to be certain the belt is hanging plumb from the head pulley to the tail pulley.

Step 11. Bolt the unit in position where it is to be operated using the 2 holes in the bottom of the base.

Step 12. The three motor mounting bolts located on the face of the base unit are used to center the belt. Two top bolts lay just behind the head pulley, the bottom bolt lays just below the head pulley. (See Fig. 8)

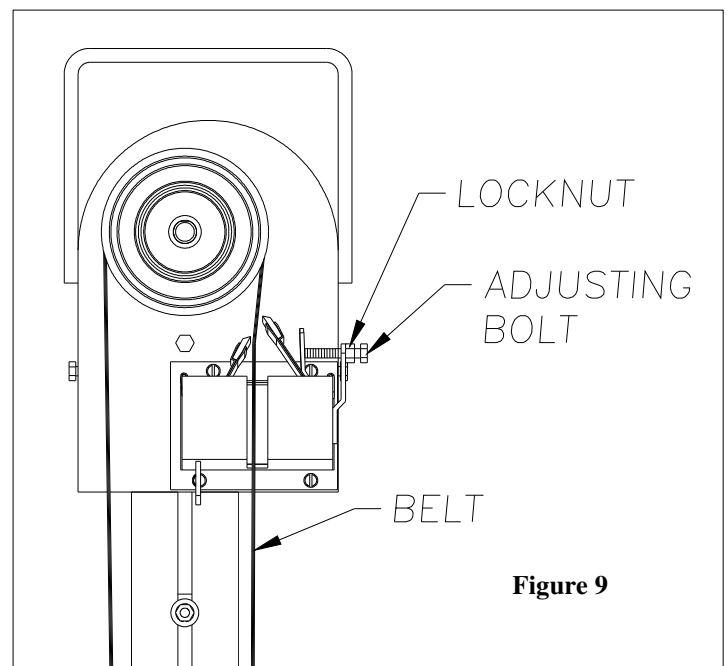
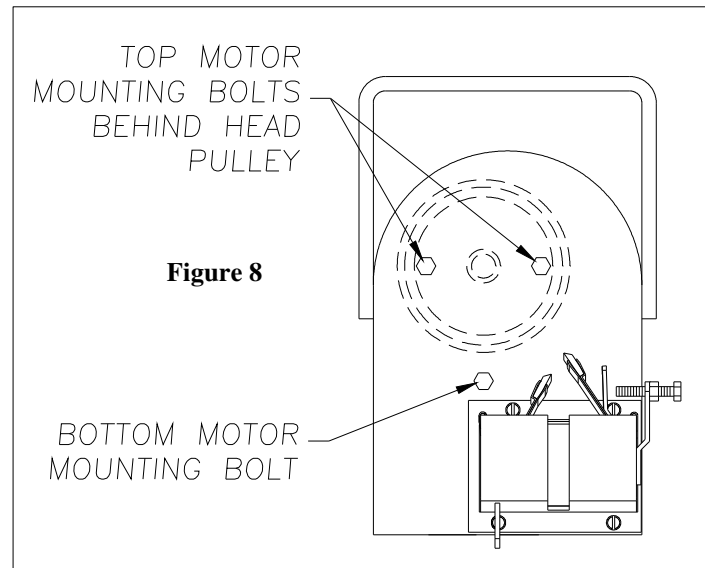
1. With the belt on the center of the head pulley, turn the unit on for a short time and observe the side-to-side movement of the belt, if any. **Caution: Keep loose clothing, fingers and hands away from head pulley while unit is running.** Examine the position of the belt on the head pulley. Turn the unit off.
 2. If the belt moved toward the inside of the head pulley (toward the motor) loosen the bottom bolt about $\frac{1}{4}$ of a turn counterclockwise. If absolutely necessary, tighten the top two bolts evenly.
 3. If the belt moved toward the outside of the head pulley (away from the motor) tighten the bottom bolt about $\frac{1}{4}$ of a turn clockwise. If absolutely necessary, loosen the top two bolts evenly.
- Repeat steps 1 thru 3 above until the belt runs in the center of the pulley.

Step 13. Carefully adjust the wiper adjusting screw on the outside wiper blade so that both blades are gently wiping the belt. When adjustment is complete, tighten the locknut. (See Fig. 9)

Step 14. Attach discharge hose or piping to 1-1/4" pipe coupling outlet located at rear of Tote-It® base.

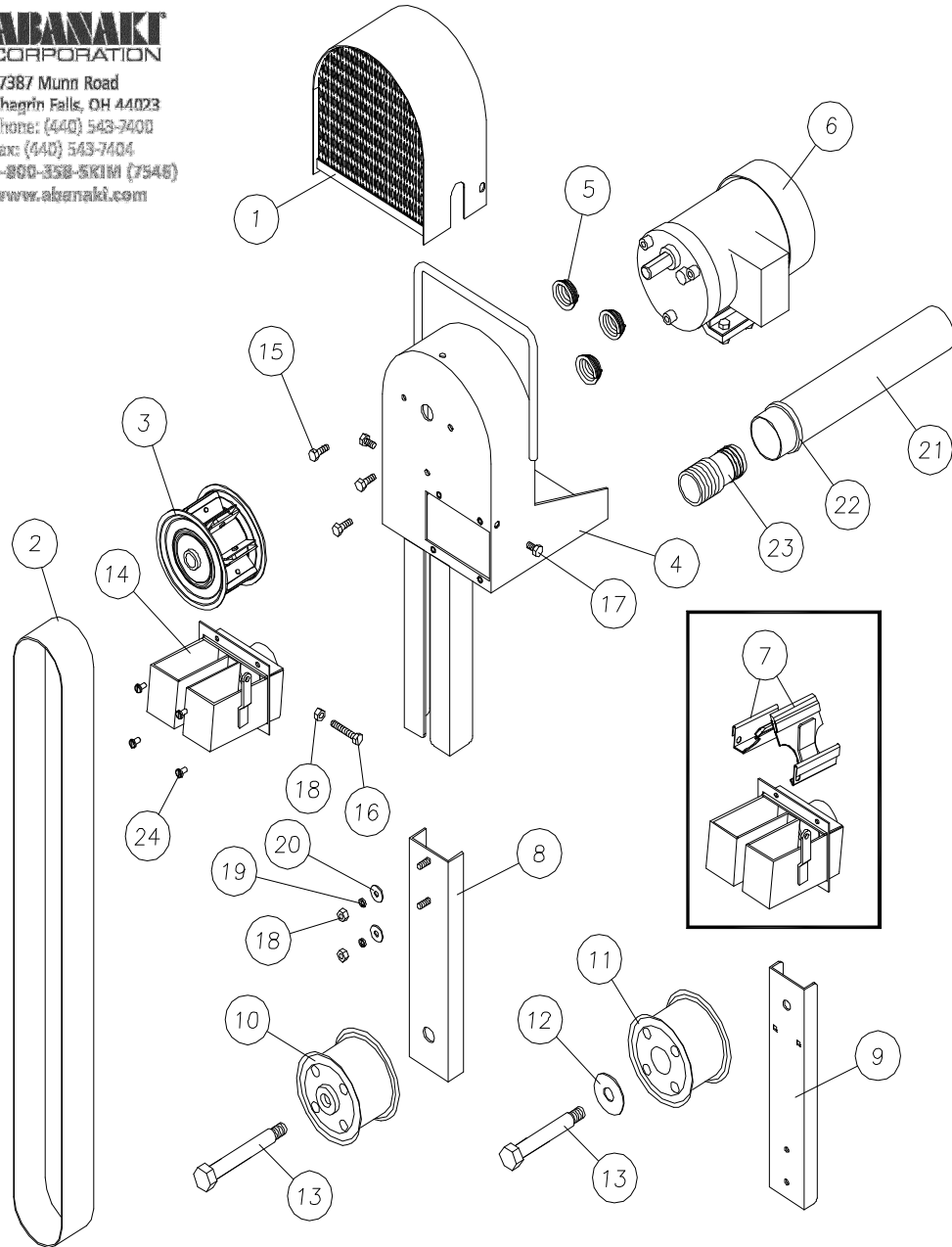
Step 15. Replace head pulley cover and fasten with $\frac{1}{4}$ -20 bolts.

The installation is now complete and your Abanaki Tote-It® is ready to operate.





ABANAKI
CORPORATION
17387 Munn Road
Chagrin Falls, OH 44023
Phone: (440) 543-7400
Fax: (440) 543-7404
1-800-358-5KIM (7546)
www.abanaki.com



Item	Qty	Part Name	Part Number	Item	Qty	Part Name	Part Number
1	1	Cover	PTI-04A	13	1	1/2-13 x 3-3/4" Lg. Hex Bolt	PT2AX
2	1	Corrosion Resistant Stl Belt (Std.) Elastomer Belt (Optional) Poly Belt (Optional)	BT2S-0000 BT2E-0000 BT2P-0000	14	1	2" Trough Weldment	PTI-05A
3	1	Head Pulley C.S.	PTI-07A	15	3	1/4-20 x 3/4" Hex Bolt	N/A
4	1	Base Weldment	PTI-01	16	1	1/4-20 x 1-1/2" Full Thd Bolt	N/A
5	3	Motor Adjusting Spring	POG-51	17	2	1/4-20 x 5/8" Hex Bolt	N/A
6	1	Motor, 115volt, 13rpm Motor, 115volt, 30rpm Motor, 110/220volt 15rpm	M14-A M14-B M14-C	18	3	1/4-20 Hex Nut	N/A
7	1	Nitrile Wiper Blade Set (Std) Viton Wiper Blade Set (Opt) Hybrid Wiper Blade Set (Opt) S.S. Wiper Blade Set (Opt)	PTI-09BN PTI-09BV PTI-09BH PTI-09BS	19	2	1/4" Lock Washer	N/A
8	1	Stabilizer Bar - 11" Lg. / 17" Lg. Stabilizer Bar - 23" Lg. / 29" Lg. Stabilizer Bar - 35" Lg. / 41" Lg. Stabilizer Bar - 47" Lg. / 53" Lg.	PTI-06A/PTI-06B PTI-06C/PTI-06D PTI-06E/PTI-06F PTI-06G/PTI-06H	20	2	1/4" Flat Washer	N/A
9	1	Stabilizer Bar Extension (if req'd)	PTI-06X	21	1	Discharge Hose	PTI-10
10	1	Tail Pulley (Elastomer Belt)	PTI-08A-EL	22	1	Discharge Hose Clamp	PTI-10A
11	1	Tail Pulley (Steel Belt)	PTI-08A-CR	23	1	1-1/4" Male PVC Adapter	PC110-02
12	1	Washer (used w/steel belt only)	PTIXW	24	4	10-32 x 3/8" Lg. Pan Hd Screw	N/A

MAINTENANCE

1. Check magnetized head pulley and wiper blades for buildup and clean if necessary.
2. Inspect discharge troughs and hose for accumulated sludge or waste, cleaning if necessary.
3. Check belt condition for evidence of wear or cracks and replace if necessary. Make certain belt is still running in center of head pulley.
4. Check wiper blades for wear and for proper setting. Reset adjustable wiper for proper wiping action if necessary.
5. Check all bolts for proper tightness.
6. Abanaki recommends keeping a spare belt and a spare set of wiper blades in stock.

STORAGE

For frequent or intermittent Tote-It® storage, Abanaki recommends the use of its optional Storage Stand. (See Fig. 10)

To store the Tote-It® on the optional stand:

1. Remove the nuts and washers from the 3/8" studs on the top of the stand.
2. Set the Tote-It® on the top plate allowing the 3/8" studs to protrude through the skimmer base. Fasten with the nuts and washers.

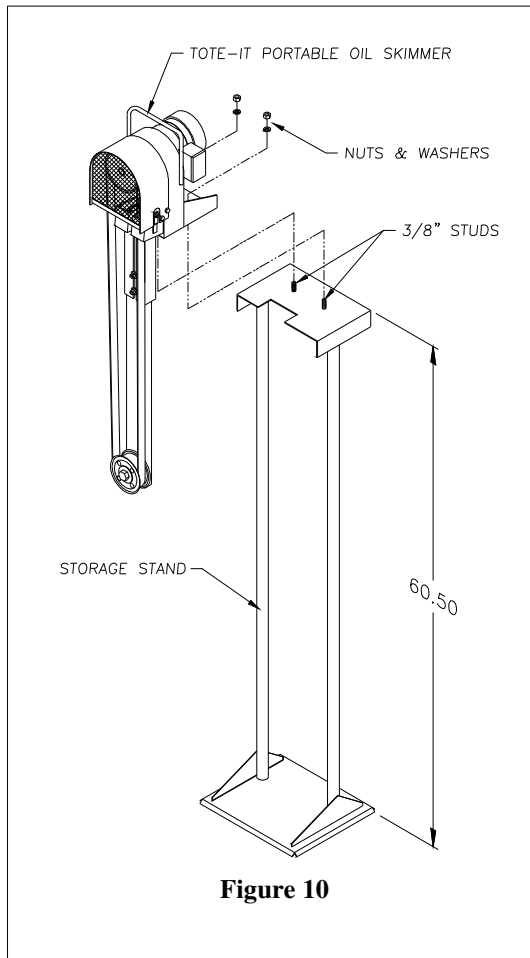
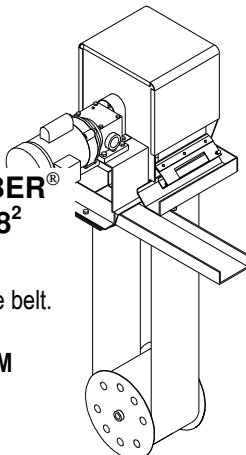


Figure 10

OTHER ABANAki UNITS AVAILABLE

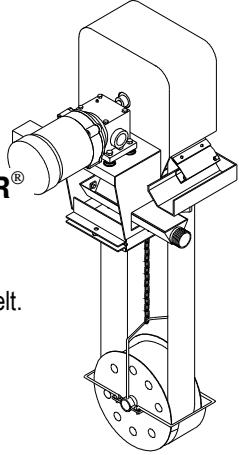
For Most Applications:



**OIL GRABBER®
MODEL 8²**

Single 8-inch wide belt.
Any length belt.
Capacity: 40 GPM

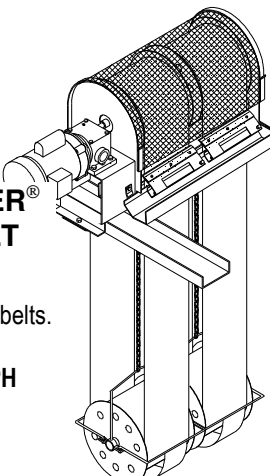
When the Model 8² Oil Grabber is too large:



**OIL GRABBER®
MODEL 4**

Single 4-inch wide belt.
Any length belt.
Capacity: 20 GPH

For High Volume Use:



**OIL GRABBER®
MULTI-BELT**

Two to five 8-inch belts.
Any length belts.
Capacity: 200 GPH