

## SPECIFICATION SHEET

### EW SERIES 7 DAY DIGITAL TIME SWITCH



#### APPLICATIONS

- Outdoor signs display
- Lighting security
- System heating & air conditioning

#### FEATURES

**SCHEDULING:** 20 ON & OFF set points for individual programs for each day of the week. Minimum setting is 1 minute.

**DAYLIGHT SAVING:** Automatic (can be omitted).

**LEAP YEAR:** Automatic Compensation

**MANUAL OVERRIDE:** Until the next regularly scheduled ON or OFF, automatic operation then resumes.

**CLOCK FORMAT:** AM/PM

**POWER OUTAGE BACKUP:** Permanent schedule retention with memory module. Supercapacitor provides 4 days of real time backup.

**MOMENTARY OPTION:** For mechanically held contractors: Model EW201B only. Configure with simple jumper change for single-channel momentary operation.

#### SPECIFICATIONS

**TIMING ACCURACY:** Line Frequency

**INPUT VOLTAGE:**

120-277VAC, 50/60Hz (automatic detection)

**TERMINAL RANGE:** #8 - #16AWG

**OPERATING TEMPERATURE:**

-40° to +149° (-40° to +65°C)

**POWER CONSUMPTION:** 6VA Max.

**ENCLOSURE:** Indoor/Outdoor NEMA 3R plastic is standard.

**DIMENSIONS:**

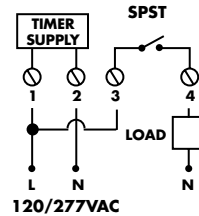
8<sup>5</sup>/<sub>16</sub>" x 5<sup>1</sup>/<sub>16</sub>" x 3<sup>1</sup>/<sub>16</sub>"

#### OTHER MOUNTINGS

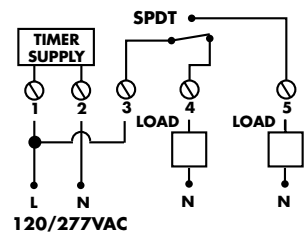
Consult factory for other enclosure or mounting options.

### WIRING DIAGRAMS

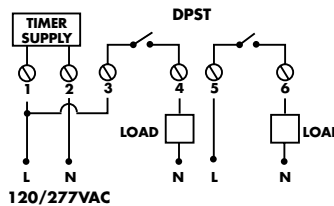
EW101B



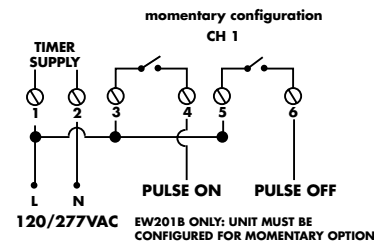
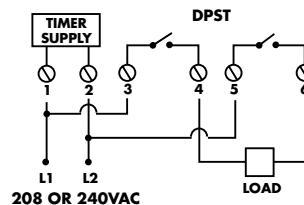
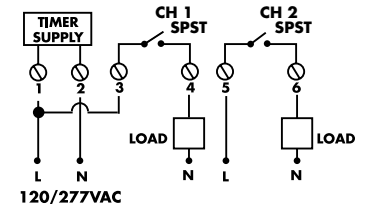
EW120B



EW103B



EW201B



CATALOG NO.	UPC CODE	INPUT SUPPLY (VAC) 50/60Hz	NO. OF CHANNELS	OUTPUT DRY CONTACTS
EW101B	82431	120 - 277	1	SPST
EW103B	82441	120 - 277	1	DPST
EW120B	82436	120 - 277	1	SPDT
EW201B	82467	120 - 277	2	SPST

TYPE	EW101B, EW103B, EW201B		EW120B		
	VOLTAGE	RATING	VOLTAGE	RATING	
		NO		NO	NC
General Purpose	120-277VAC	40A	120-277 VAC	30A	30A
Inductive	120-277VAC	40A	120-277 VAC	30A	30A
Ballast	120VAC	30A	120VAC	30A	10A
	208-277VAC	20A	208-277VAC	20A	10A
Tungsten	120VAC	15A	120VAC	15A	2A
Pilot Duty	120-277VAC	720VA	120-277 VAC	720VA	720VA
Motor	120VAC	1HP	120VAC	1HP	1HP
	208VAC	1 1/2HP	208VAC	1 1/2HP	1 1/2HP
	240-277VAC	2HP	240-277VAC	2HP	2HP
Resistive	28VDC	30A	28 VDC	30A	30A