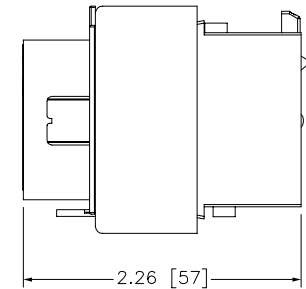
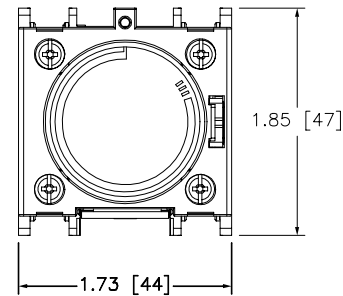
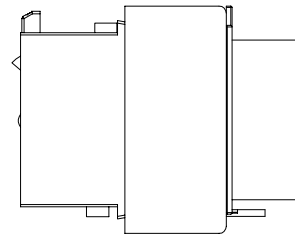



TYPE	TIMING RANGER (secs)	CATALOG NO LAD (1)
ON-DELAY	0.1-3.0	T0
ON-DELAY	0.1-30	T2
ON-DELAY	10-180	T4
ON-DELAY	1-30	S2
OFF-DELAY	0.1-3.0	R0
OFF-DELAY	0.1-30	R2
OFF-DELAY	10-180	R4




Catalog Number: LADT(1)  
 Ratings: 250V  
 UL File/CCN: E48539/NLDX  
 CSA File/Class: LB43364/321104  
 Meets Standards: IEC 60947-4  
 Weight: .1 KG  
 Wire Size: #8 - #14  
 Termination Method: Screw Terminals  
 Terminal torque: 7 LB IN  
 Mounting Hwd.: SNAP MOUNT ON TOP OF CONTACTOR

"THE SQUARE D COMPANY HAS PROPRIETARY RIGHTS TO THE INFORMATION CONTAINED  
 HEREON. THIS INFORMATION REMAINS THE PROPERTY OF SQUARE D COMPANY AND MAY  
 BE USED ONLY IN CONFORMANCE WITH INSTRUCTIONS ISSUED BY SQUARE D COMPANY.  
 USER SHOULD VERIFY DRAWINGS ARE TO THE LATEST/CURRENT REVISION PRIOR  
 TO INCORPORATING IN A DESIGN FILE."

**DO NOT SCALE DRAWING**  
 UNLESS OTHERWISE SPECIFIED DIMENSIONS ARE IN INCHES

THIRD ANGLE  
 PROJECTION   
 TOLERANCES  
 UNLESS OTHERWISE SPECIFIED  
 2 PLACE DECIMALS ± .01

TIME DELAY AUXILIARY CONTACT BLOCK  
 LADT(1)


**SQUARE D COMPANY**

DWG# LADT\_0\_OD  
 NO.