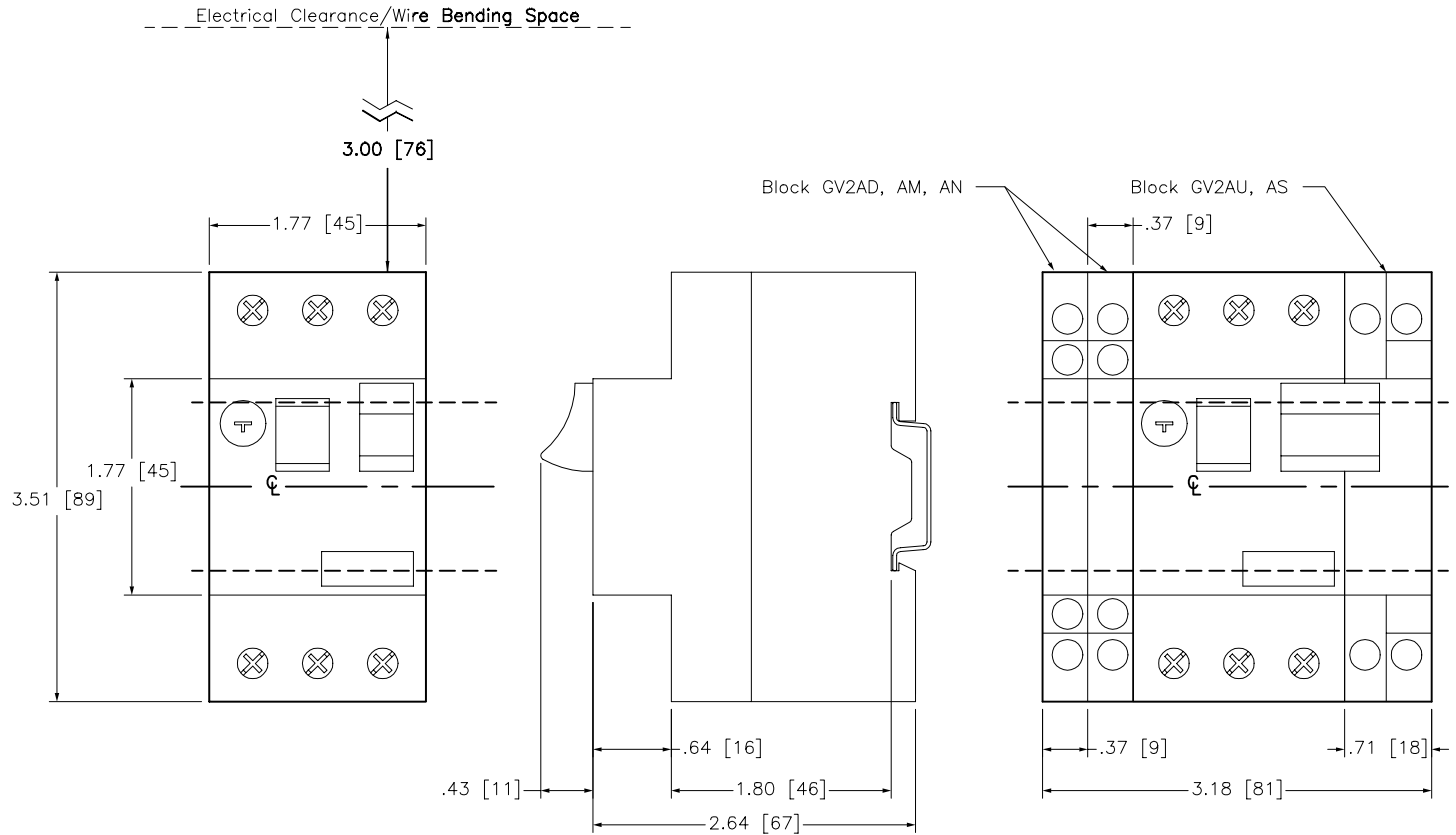


MANUAL STARTER AND PROTECTOR

CURRENT SETTING RANGE (AMPS)	CATALOG NO GV2 (1)
.10-.16	ME01
.16-.25	ME02
.25-.40	ME03
.40-.63	ME04
.63-1	ME05
1-1.6	ME06
1.6-2.5	ME07
2.5-4	ME08
4-6.3	ME10
6-10	ME14
9-14	ME16
13-18	ME20
17-23	ME21
20-25	ME22
24-32	ME32

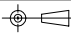
(1) = SELECT DESIRED SUFFIX FOR COMPLETE CATALOG NUMBER



Catalog Number: GV2(1)
 Ratings: 600V
 UL File/CCN: E89451/NLRV
 CSA File/Class: LR81630/3211 05
 Meets Standards: IEC 60947-4
 Weight: .26kg
 Wire Size: Power #8-#16
 Termination Method: Screw Clamp
 Terminal torque: 15 lb-in
 Mounting Hwd.: 35mm DIN rail

"THE SQUARE D COMPANY HAS PROPRIETARY RIGHTS TO THE INFORMATION CONTAINED HEREON. THIS INFORMATION REMAINS THE PROPERTY OF SQUARE D COMPANY AND MAY BE USED ONLY IN CONFORMANCE WITH INSTRUCTIONS ISSUED BY SQUARE D COMPANY. USER SHOULD VERIFY DRAWINGS ARE TO THE LATEST/CURRENT REVISION PRIOR TO INCORPORATING IN A DESIGN FILE."

DO NOT SCALE DRAWING
 UNLESS OTHERWISE SPECIFIED DIMENSIONS ARE IN INCHES

THIRD ANGLE PROJECTION

TOLERANCES
 UNLESS OTHERWISE SPECIFIED
 2 PLACE DECIMALS ± .01

MOTOR CIRCUIT PROTECTOR
 GV2M(1)

 **SQUARE D COMPANY**

DWG# GV2M_0_OD
 NO.