

# ELB Light Container

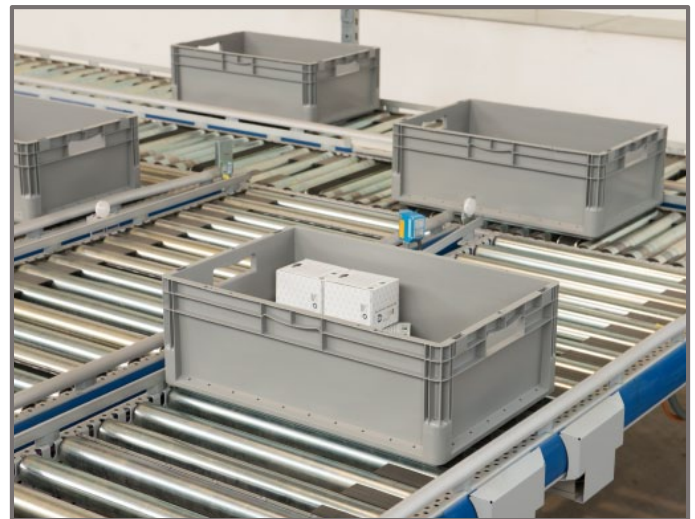
*The all-round container for everyday situations*

SSI SCHAEFER has developed more than 2,000 types of high-quality warehouse, order picking and transport containers. Our know-how has continually developed through years of experience, use of state-of-the-art technologies and intensive collaboration with customers. Whether boxes are needed for electrical parts, automotive accessories, mail order items, computer chips, food or paperback books – we can develop the right solution.

We have brought together our knowledge from all special applications to produce an innovative high-tech product. This all-round container, designed for everyday use, is lightweight, extremely sturdy and most importantly sensibly priced. Designed using a new material and new tool technology, the ELB Light Container is a high-quality product which can be used for virtually any purpose.



Lightest weight per size on the market.



New polypropylene blend improves noise reduction in conveying applications.



Competitively priced for manual applications.



Meets the highest standards of quality, even under highly demanding automated systems.

### Base Variants

Perpendicular sides for optimal internal capacity and easy cleaning. Specially-designed corners improve stacking loads.

- Smooth (standard version) – 40 lbs. load capacity. For manual handling or transferring items to modular shelving.
- Ribbed – 75 lbs. load capacity. Reinforced, diagonally ribbed base with extra all-round ribs (tread) and optimized radii for silent conveyor running.
- Reinforced – 110 lbs. load capacity. Welded base plate with sloped base and shaping for optimal conveyor running.

ELB come available in 4 different configurations: no lid, with dust cover, with hinged lid, and with 2 piece hinged lid.



Smooth Bottom



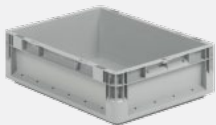
Hinged Lids

### TECHNICAL SPECIFICATIONS

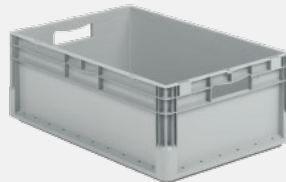
Load Cap.: 40 lbs. (Standard Version)  
 Stack Cap.: 500 lbs.  
 Temp. Range: -4F to 140F.  
 Surface  
 Resistance: Grease, most oils, acids, alkalis and cleaners.



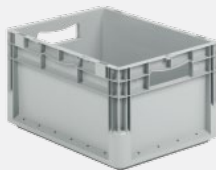
Grainger#: 49H887  
 Manuf#: ELB.6120GY1  
 Weight: 1.6 lbs.  
 Ext. dim.: 24" x 16" x 5"  
 Int. dim.: 21 <sup>15</sup>/<sub>16</sub>" x 14" x 4 1/2"  
 Dim: L" x W" x H"  
 Volume: 0.80 cu.ft.  
 Hand Grip: Open at front



Grainger#: 49H885  
 Manuf#: ELB.4120GY1  
 Weight: 0.7 lbs.  
 Ext. dim.: 16" x 12" x 5"  
 Int. dim.: 14" x 10" x 4 1/2"  
 Dim: L" x W" x H"  
 Volume: 0.37 cu.ft.  
 Hand Grip: Shell at front



Grainger#: 49H888  
 Manuf#: ELB.6220GY1  
 Weight: 2.4 lbs.  
 Ext. dim.: 24" x 16" x 9"  
 Int. dim.: 21 <sup>15</sup>/<sub>16</sub>" x 14" x 8 <sup>7</sup>/<sub>16</sub>"  
 Dim: L" x W" x H"  
 Volume: 1.53 cu.ft.  
 Hand Grip: Open at front



Grainger#: 49H886  
 Manuf#: ELB.4220GY1  
 Weight: 1.3 lbs.  
 Ext. dim.: 16" x 12" x 9"  
 Int. dim.: 14" x 10" x 8 <sup>7</sup>/<sub>16</sub>"  
 Dim: L" x W" x H"  
 Volume: 0.69 cu.ft.  
 Hand Grip: Shell at front



Grainger#: 49H889  
 Manuf#: ELB.6320GY1  
 Weight: 3.3 lbs.  
 Ext. dim.: 24" x 16" x 13"  
 Int. dim.: 21 <sup>15</sup>/<sub>16</sub>" x 14" x 12 <sup>7</sup>/<sub>16</sub>"  
 Dim: L" x W" x H"  
 Volume: 2.19 cu.ft.  
 Hand Grip: Open at front