

All the right tools to maximize your efficiency for ingredient storage

**55%**  
PRODUCTIVITY SAVINGS  
with one-handed access

See it in ACTION  
www.rubbermaidcommercial.com



Complies with **FDA** FOOD CODE 3-304.12 to increase inspection score

SELECTION GUIDE ON BACK

### PROSAVE™ INGREDIENT BINS

Item No.	Description	Gallons(L)	Cups(L)	Cubic Ft <sup>3</sup> (Meters <sup>3</sup> )	Flour	Sugar	Depth	Width	Height	Case Weight (Lbs To Kg)	Color	Case Pack
FG9G6000	Shelf Ingredient Bin w/ 1/2 Cup Measuring Scoop	2.62 (9,92) Capacity	40 (9,46) x 12 h	.33 (0,01)	13 (6)	17 (8)	15	11.75	8.50	3.30	WHT	1
FG9G5700	Shelf Ingredient Bin w/ 2 Cup Portioning Scoop	6.25 (23,66) Capacity	100 (23,66) x 12 h	.83 (0,02)	31 (14)	42 (19)	23.50	11.50	16.88	13.25	WHT	1
FG9G5800	Shelf Ingredient Bin w/ 2 Cup Portioning Scoop	12.63 (47,79) Capacity	200 (47,32) x 12 h	1.67 (0,05)	63 (29)	87 (39)	23.50	19.20	16.88	18.50	WHT	1
FG360088	Ingredient Bin w/ 32 oz Scoop	25 (94,63) Capacity	400 (94,64) x 12 h	2.75 (0,08)	125 (57)	174 (79)	29.25	13.13	28	27.65	WHT	1
FG360288	Ingredient Bin w/ 32 oz Scoop	30.81 (116,62)	500 (118,29)	3.75 (0,11)	156 (71)	217 (98)	29.50	15.50	28	32.66	WHT	1
FG360388	Ingredient Bin w/ 32 oz Scoop	37.62 (142,39)	600 (141,95)	4.13 (0,12)	188 (85)	261 (118)	29.75	18	28	38.74	WHT	1
FG9F7700	Lid w/ 32 oz Scoop for 3600-88 Ingredient Bin						29	12.10	1.90	5.8	CLR	1
FG9F7800	Lid w/ 32 oz Scoop for 3602-88 Ingredient Bin						29	14.50	1.90	6.5	CLR	1
FG9F7900	Lid w/ 32 oz Scoop for 3603-88 Ingredient Bin						29	17.20	1.90	7.37	CLR	1
FG360100	Flat Top Ingredient Bin w/ Sliding Hinged Lid	27.75 (105,03)	450 (106,46)	3.75 (0,11)	139 (63)	178 (81)	22	22	23	29.11	WHT	1

### PROSAVE™ INGREDIENT CONTAINERS

Item No.	Description	Gallons(l)	Cups(l)	Cubic Ft <sup>3</sup> (meters <sup>3</sup> )	Flour	Sugar	Depth	Width	Height	Case Weight (lbs to kg)	Color	Case Pack
FG9G7600	Sliding Lid w/ 2 Cup Scoop (fits 2610 BRUTE® Container) Scoop						17	17	4.75	3.04	WHT	1
FG9G7700	Sliding Lid w/ 3 Cup Scoop (fits 2620 BRUTE® Container)						20.75	20.75	5	4.30	WHT	1
FG9G7800	Sliding Lid w/ 4 Cup Scoop (fits 2632 BRUTE® Container)						23.50	23.50	5.25	5.30	WHT	1
FG9G7300	Sliding Lid w/ 2 Cup Scoop and 2610 BRUTE® Container COMBO	6.70 (25,36)	100 (23,66)	.90 (0,03)	33 (15)	46 (21)	16.90	16.90	18.90	7.92	WHT	1
FG9G7400	Sliding Lid w/ 3 Cup Scoop and 2620 BRUTE® Container COMBO	15.60 (59,05)	250 (59,15)	2.09 (0,06)	78 (35)	109 (49)	20.90	20.90	24.80	10.65	WHT	1
FG9G7500	Sliding Lid w/ 4 Cup Scoop and 2632 BRUTE® Container COMBO	25.60 (96,90)	400 (94,64)	3.42 (0,10)	128 (58)	178 (81)	23.40	23.40	29.30	14.05	WHT	1
FG261000	BRUTE® Container without Lid	10 (37,85)	150 (35,49)	1.33 (0,04)	47 (21)	65 (29)	15.63	15.63	17.13	19	WHT	6
FG262000	BRUTE® Container without Lid	20 (75,70)	300 (70,98)	2.66 (0,08)	94 (43)	130 (59)	19.50	19.50	22.88	35	WHT	6
FG263200	BRUTE® Container without Lid	32 (121,12)	500 (118,29)	4.28 (0,12)	156 (71)	217 (98)	22	22	27.25	49.5	WHT	6
FG264000	BRUTE® Dolly for 9G74, 9G75, 2620, and 2632						18.25	18.25	6.63	13.1	BLK	2

### PROSAVE™ RACKS FOR SHELF INGREDIENT BINS

Item No.	Description	Shelves	Depth	Width	Height	Case Weight (lbs to kg)	Color	Case Pack
FG9G5900	Cart for Shelf Ingredient Bins	2 Shelves, Each Shelf holds (4) 9G60, (2) 9G57, or (1) 9G58	18	26	47.75	37.50	CHRM	1
FG9G7900	Mobile Rack for Shelf Ingredient Bins, 38" wide	3 Shelves, Each Shelf holds (6) 9G60, (3) 9G57, or (1) 9G58	14	38	48.276	43.8	CHRM	1
FG9G8000	Mobile Rack for Shelf Ingredient Bins, 50" wide	4 Shelves, Each Shelf holds (8) 9G60, (4) 9G57, or (2) 9G58	18	50	67.157	76	CHRM	1
FG9G8100	Wall Mounted Rack for Shelf Ingredient Bin (9G60 only)*	Shelf holds (1) 9G60	10.50	10.63	7.13	5.2	CHRM	2

\* Not NSF Certified

### SCOOPS

Item No.	Description	Gallons(l)	Cups(l)	Cubic Ft <sup>3</sup> (meters <sup>3</sup> )	Flour	Sugar	depth	Width	Height	Case weight (lbs to kg)	Color	Case Pack
FG9G8200	1/2 Cup Measuring Scoop for 9G60 Shelf Ingredient Bin		1/2 Cup (0,12)				7.38	3.38	1.50	1.05	WHT	12
FG9F7500	BOUNCER® Contour Scoop for 3600-88, 3602-88, 3603-88 Ingredient Bins and 9G77		32 oz (0,95)				10.80	4.80	4.70	4.2	CLR	6
FG9F7600	BOUNCER® Contour Scoop for 3600-88, 3602-88, 3603-88 Ingredient Bins and 9G78		64 OZ (1,90)				13.44	5.89	6.0	6.2	CLR	6
FG9G5100	BOUNCER® Portioning Scoop for 9G57, 9G58 Shelf Ingredient Bins and 9G76, 9G73		2 CUPS (0,47)				4.60	5.10	5.25	3.2	CLR	12
FG9G5200	BOUNCER® Portioning Scoop for 9G77, 9G74 Sliding Lid		3 CUPS (0,71)				6	5.10	5.70	4.0	CLR	12
FG9G5300	BOUNCER® Portioning Scoop for 9G78, 9G75 Sliding Lid		4 Cups (0,95)				6	5.60	6.60	5.0	CLR	12

Prices, specifications and product availability are subject to change without notice. Products manufactured under a quality management system registered to ISO 9002.



Rubbermaid Commercial Products, the leader in food storage, understands the complexity of your business and the multitude of challenges you face on a daily basis managing food costs, time, and labor issues. To help you strike a successful balance in managing the daily demands of your business, we build value into every storage container we make.

### ProSave™ Management Systems



#### ProSave™ Ingredient Management System

Ingredient Bins and Containers allow for ease of access to ingredients for preparation efficiency, and promoting food safety compliance.



#### ProSave™ Food Box System

Integrated dual action lid, flips or slides open saving time while enhancing food quality.

### Food Storage



#### Food Boxes

Clarity for product identification for easier inventory control.



#### Square Space Saving Storage Containers

Stackable containers allow you to store more in less space.



#### Round Storage Containers

Economical, durable and easy to use.



#### Heavy Duty Hot and Cold Food Pans

Streamline your operations for storage, preparation, cooking, and serving.

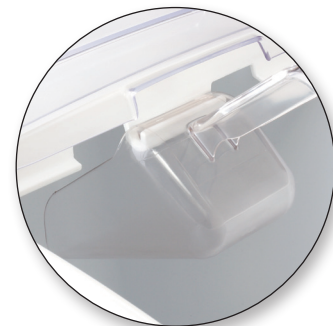




# Smarter Food Preparation



Speed up food preparation with one-handed access



Dedicated internal scoop storage meets safety compliance

**55%**

**PRODUCTIVITY SAVINGS**  
with one-handed access

# Smarter Food Storage



Increase storeroom efficiency with one-handed access while stacked



Ensure proper food rotation with FIFO barrier

See it in ACTION  
[www.rubbermaidcommercial.com](http://www.rubbermaidcommercial.com)

# Smarter Food Production



Improve safety compliance with dedicated internal scoop storage



Enhance food production efficiency with rotating clear lid

**NEW**  
**PATENT-PENDING ROTATING LID**  
for BRUTE® containers

INCLUDES SCOOP

See it in ACTION  
[www.rubbermaidcommercial.com](http://www.rubbermaidcommercial.com)

# Reference Guide



## ProSave™ INGREDIENT MANAGEMENT SYSTEM

Ingredient	Item No.	Capacity (Cups / lb)	ProSave™ BIN TYPE
Flour	9660	40	SHELF INGREDIENT BINS
Sugar	9657	100	
10x Sugar	9658	200	INGREDIENT BINS
Beans	360088	400	
Bread crumbs	360288	500	INGREDIENT BINS
Brown sugar	360388	600	
Cocoa	9G79G76	100	BRUTE® CONTAINERS
Corn meal	9G79G77	250	
Roll oats	9G79G78	400	BRUTE® CONTAINERS
Walnuts	9G79G79	80	

### ProSave™ Ingredient Bins

- Patented sliding lid design for quick one-handed access
- Includes measuring scoop with dedicated internal scoop storage
- Available in 7 sizes
- Certified to NSF/ANSI/3-A and 2 standards

Complies with **FDA FOOD CODE**  
3-304.12 to increase inspection score

INCLUDES SCOOP



### Racks for Shelf Ingredient Bins

- Maximize storage space
- Holds 200 pounds per shelf\*
- 5" non-marking casters



### Sliding Lid for BRUTE® Ingredient Containers

- Quick one-handed access
- Patent pending rotating lid
- Hook options for 32 or 64 oz Bouncer® Contour Scoop
- Includes Bouncer® Portioning Scoop
- Certified to NSF/ANSI/3-A and 2 standards



\*ALL PROSAVE FOOD STORAGE CONTAINERS ARE NSF CERTIFIED TO NSF/ANSI/3-A AND 2 STANDARDS.