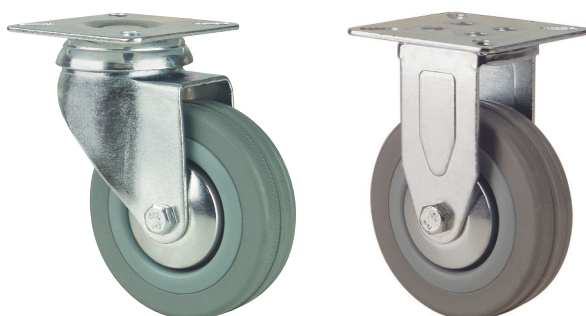


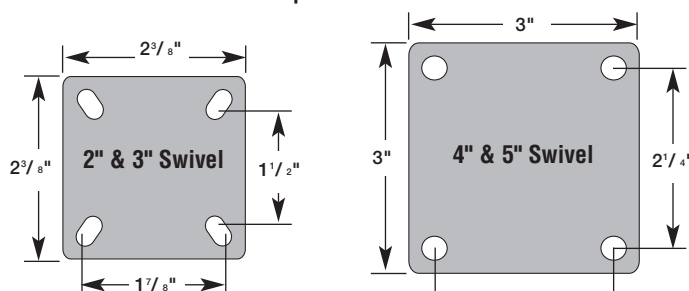


# Revvo D Series Light-Duty Casters

Designed for a variety of light-duty applications, Revvo D Series casters are available in top plate swivel and fixed (rigid) models and bolt hole swivel models. They are offered in four wheel sizes (2", 3", 4" & 5") with load capacities ranging from 100 to 220 lbs. Wheel material options include rubber and nylon. Locking brakes are available for all swivel models.

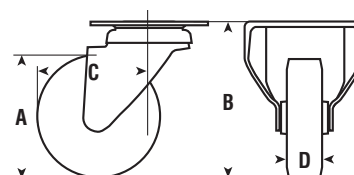


Top Plate Models



TSED 050 & 075 top plates have fixing holes to fit 1/4" diameter bolts and are slotted from 1-1/2" to 1-7/8".

TSED 100 & 125 top plates have fixing holes to fit 5/16" diameter bolts.



D SERIES with Rubber Wheels							Top Plate Models		
A	B	C	D	Load Capacity	Bearing	Wheel	Swivel Part #	w/Brake	Fixed Part #
2"	2-11/16"	29/32"	23/32"	110	Plain	Rubber	TSED 050 RNOD	TSED 050 RNOD-B	TFED 050 RNOD
3"	3-13/16"	1-1/8"	29/32"	154	Plain	Rubber	TSED 075 RNOD	TSED 075 RNOD-B	TFED 075 RNOD
4"	5-3/16"	1-1/2"	1-1/16"	176	Plain	Rubber	TSED 100 RNOD	TSED 100 RNOD-B	TFED 100 RNOD
5"	6-3/32"	1-5/8"	1-1/16"	220	Plain	Rubber	TSED 125 RNOD	TSED 125 RNOD-B	TFED 125 RNOD

D SERIES with Nylon Wheels							Top Plate Models		
A	B	C	D	Load Capacity	Bearing	Wheel	Swivel Part #	w/Brake	Fixed Part #
2"	2-11/16"	29/32"	23/32"	110	Plain	Nylon	TSED 050 WNOD	TSED 050 WNOD-B	TFED 050 WNOD
3"	3-13/16"	1-1/8"	29/32"	154	Plain	Nylon	TSED 075 WNOD	TSED 075 WNOD-B	TFED 075 WNOD
4"	5-3/16"	1-1/2"	1-1/16"	176	Plain	Nylon	TSED 100 WNOD	TSED 100 WNOD-B	TFED 100 WNOD
5"	6-3/32"	1-5/8"	1-1/16"	220	Plain	Nylon	TSED 125 WNOD	TSED 125 WNOD-B	TFED 125 WNOD

D SERIES with Rubber Wheels							Bolt Hole Models	
A	B	C	D	Load Capacity	Bearing	Wheel	Swivel Part #	w/Brake
2"	2-21/32"	29/32"	23/32"	110	Plain	Rubber	BSED 050 RNOD	BSED 050 RNOD-B
3"	3-3/4"	1-1/8"	29/32"	154	Plain	Rubber	BSED 075 RNOD	BSED 075 RNOD-B
4"	5-3/32"	1-1/2"	1-1/16"	176	Plain	Rubber	BSED 100 RNOD	BSED 100 RNOD-B
5"	6"	1-5/8"	1-1/16"	220	Plain	Rubber	BSED 125 RNOD	BSED 125 RNOD-B



D SERIES with Nylon Wheels							Bolt Hole Models	
A	B	C	D	Load Capacity	Bearing	Wheel	Swivel Part #	w/Brake
2"	2-21/32"	29/32"	23/32"	110	Plain	Nylon	BSED 050 WNOD	BSED 050 WNOD-B
3"	3-3/4"	1-1/8"	29/32"	154	Plain	Nylon	BSED 075 WNOD	BSED 075 WNOD-B
4"	5-3/32"	1-1/2"	1-1/16"	176	Plain	Nylon	BSED 100 WNOD	BSED 100 WNOD-B
5"	6"	1-5/8"	1-1/16"	220	Plain	Nylon	BSED 125 WNOD	BSED 125 WNOD-B

