

Operating Instructions

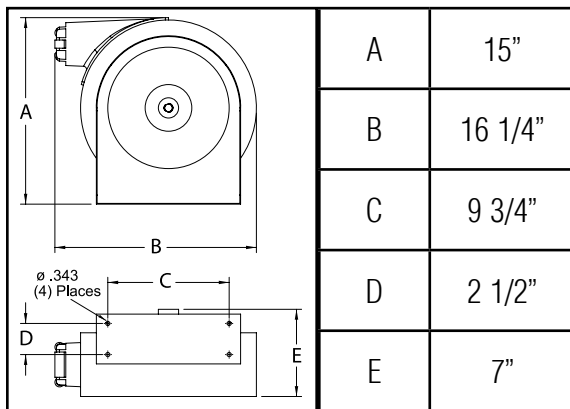
Series 5000 Spring Driven Hose Reels

Low Pressure Model Numbers:

5400 ELP	5435 ELP	5615 ELP	5630 ELP
5420 ELP	5450 ELP	5620 ELP	5635 ELP
5425 ELP	5600 ELP	5625 ELP	



Dimensions



SAFETY

1. Do not use reel at higher pressures or temperatures than listed on the back of this bulletin.
2. Remove all spring tension before beginning disassembly process.

INSTALLATION:

A flexible hose connection must be used between the hose reel inlet and the source of supply to prevent possible misalignment and binding.

MOUNTING:

The hose reel is equipped with a universal mounting bracket so that it can be mounted on the floor, wall or ceiling; whichever place is convenient. The hose guide arm can be moved to the position desired by removing the 1/4-20 hex nuts (4) fastening the hose guide enclosure to the reel back cover. Shift the hose guide enclosure to the desired position and replace the 1/4-20 hex nuts. **NOTE:** For proper installation in wall mount applications, ensure reel is mounted with inlet on the right as you are facing the reel. Failing to do so could cause latching issues.

LUBRICATION:

Hose reel spring and bearings are factory lubricated and require no further lubrication.

REPLACING HOSE:

1. Remove 1/4-20 hex nuts (4) which fasten the hose guide enclosure to the reel back cover and pull off the enclosure.
2. Wind spool flange clockwise-facing swivel-until spring is tight.
3. Back off three turns and latch.
4. Insert hose through roller guide.
5. Connect hose fitting to swivel joint and secure hose with clamps.

ADJUSTMENTS:

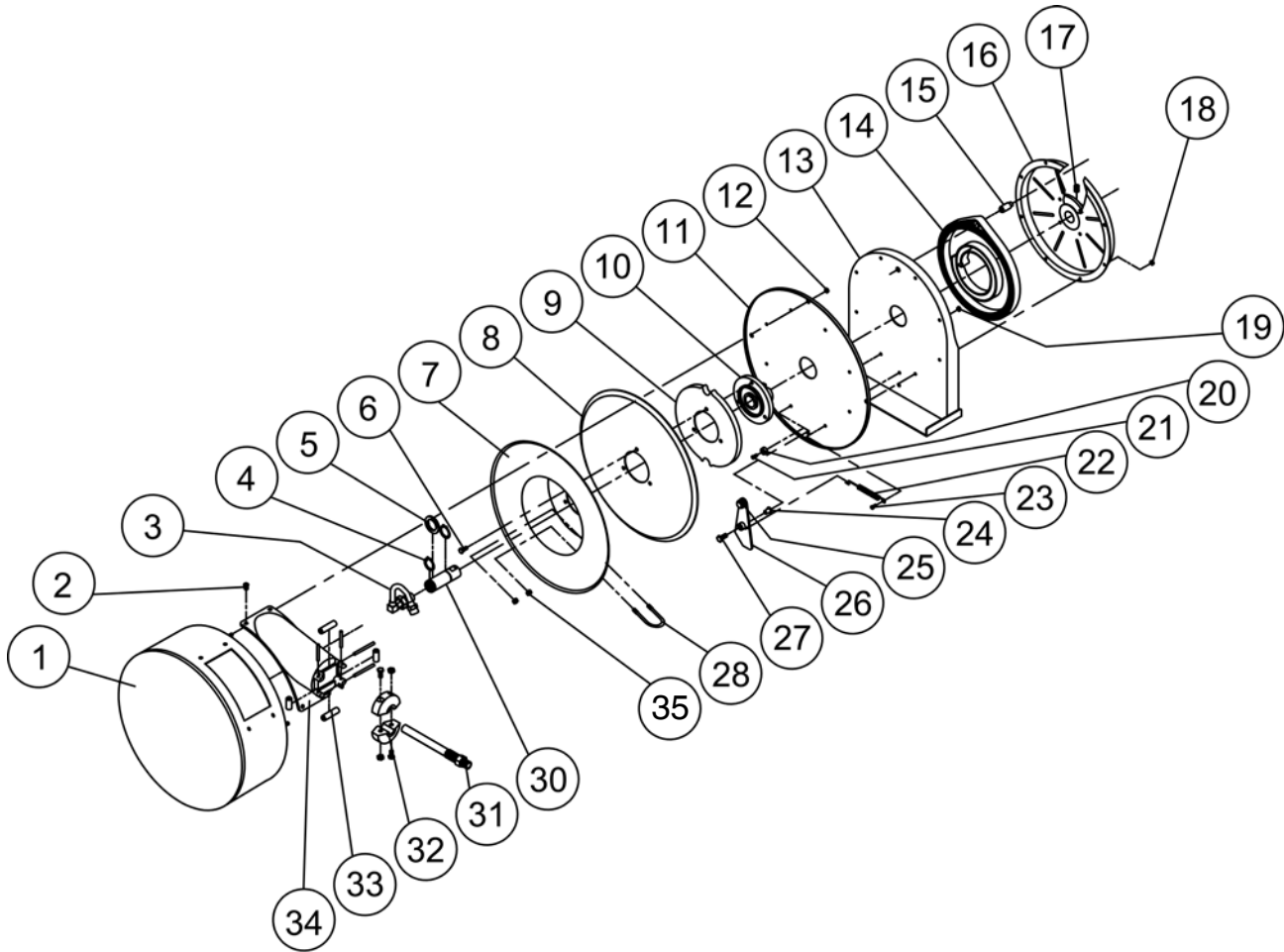
To adjust spring tension, add or remove wraps of hose from the spool, one wrap at a time until desired tension is obtained.

REPAIRS:

Extensive repairs should be performed only by an authorized serviceman or factory to avoid damage which may void your warranty. Remove all spring tension before beginning disassembly process.

Form# 490-884 Rev: 4/2014

Series 5000 Spring Driven Hose Reels



Item #	Part #	# Req.	Description	Item #	Part #	# Req.	Description	Item #	Part #	# Req.	Description
1	500102	1	Case and Cover Assembly	12	300070	4	1/4-20 Nyloc Nut	24	S400012	1	Latch Bushing
2	300001	4	10-32 x 3/8" Screw	13	500101	1	Base Assembly	25	400020	7	O-ring
3	S600886	1	Swivel Assembly	15	S261360	1	Spring Case Stud	26	S400109	1	Latch Plate Assembly
4	300031	1	1" Snap Ring	16	S500103	1	Spring Case Assembly	27	300035	1	10-32 x 1" Mach. Screw
5	300034	4	Spacing Washer	17	300006	1	3/8-16 x 1/2" Set Screw	28	3-117440	1	Hose Clamp
6	S295-102	3	1/4-10 x 5/8" Hex Screw	18	S300011	7	10-32 Hex Lock Nut	30	S400015	1	Main Shaft
7	260022	1	Sheave Flange	19	S82-15	1	10-32 x 3/8" Nyloc Nut	33	S260019	1	Guide Roller Pin Kit
8	500006	1	Sheave Disk	20	S400021	1	Latch Bumper	34	HR2012	1	Hose Guide Assembly
9	S500019	1	Latch Cam	21	S32-136	1	10-24 x 3/8" Screw	35	261650-1	2	1/4-20 Nyloc Nut
10	S260648	1	Spring Arbor	22	S400018	1	Latch Spring				
11	500004	1	Reel Cover	23	300002	7	10-32 x 1/2" Screw				

Item #	Description	# Req.	5400 ELP	5420 ELP	5425 ELP	5435 ELP	5450 ELP
14	Drive Spring Assembly	1	S503755	S503755	S503755	S503755	S503755
31	Hose Assembly	1	None	601001-20	601001-25	601001-35	601001-50
32	Hose Bumper	1	None	1-HR1004-A	1-HR1004-A	1-HR1004-A	1-HR1004-A

Item #	Description	# Req.	5600 ELP	5615 ELP	5620 ELP	5625 ELP	5630 ELP	5635 ELP
14	Drive Spring Assembly	1	504240	504240	504240	504240	504240	504240
31	Hose Assembly	1	None	601011-15	601011-20	601013-25	S601011-30	S601013-35
32	Hose Bumper	1	None	1-HR1004	1-HR1004	1-HR1004	1-HR1004	1-HR1004