



**METRIC
ROD
ENDS**

2-Piece Stainless Steel Rod Ends

PTFE Lined - Right & Left Hand Threads - Male & Female

C O M M E R C I A L

Specifications

BALL

- 5440C Stainless Steel
- Heat Treated
- Hard Chrome Plated
- Precision Ground

BODY

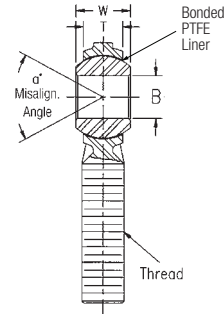
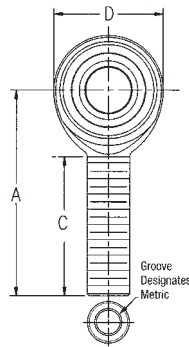
- 300 Series Stainless Steel
- PTFE Lined

Male

ITEM NUMBER

DIMENSIONS IN MILLIMETERS

Right Hand	Left Hand	B + .065 - 0.12	W ± .12	T Ref.	A ± .40	D Ref.	Ball Dia. Ref.	C ± 1.00	Thread 6H	Misalign. Angle	Ult. Radial Static Load Cap. (Newtons)	Approx. Brg. Wgt. (grams)
39N493	39N494	5	8	5.75	33	16.00	11.10	20	M5X.08	22	4,056	12
39N495	39N496	6	9	6.25	36	19.00	12.70	22	M6X1.0	23	6,093	18
39N497	39N498	8	12	8.00	42	22.25	15.88	25	M8X1.25	28	9,118	31
39N499	39N501	10	14	9.50	48	27.00	19.05	29	M10X1.5	26	14,144	68
39N502	39N503	12	16	10.75	54	30.00	22.23	33	M12X1.75	27	17,373	78
39N504	39N505	14	19	12.25	60	34.75	25.40	36	M14X2.0	30	23,699	118
39N506	39N507	16	21	12.75	66	38.00	28.58	40	M16X2.0	33	25,162	173

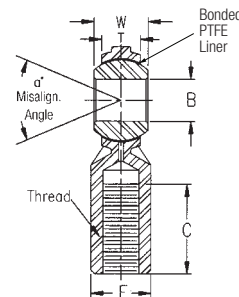
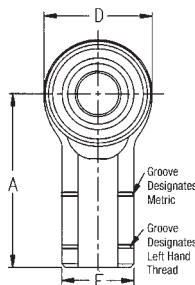


Female

ITEM NUMBER

DIMENSIONS IN MILLIMETERS

Right Hand	Left Hand	B + .065 - .012	W ± .12	T Ref.	A ± .40	D Ref.	E ± .25	F ± .25	Ball Dia. Ref.	C ± 1.00	Thread 6H	Misalign. Angle	Ult. Radial Static Load Cap. (Newtons)	Approx. Brg. Wgt. (grams)
39N479	39N480	5	8	5.75	27	16.00	11	9	11.10	14	M5X.08	22	4,136	18
39N481	39N482	6	9	6.25	30	19.00	13	11	12.70	14	M6X1.0	23	6,138	25
39N483	39N484	8	12	8.00	36	22.25	16	14	15.88	17	M8X1.25	28	9,340	40
39N485	39N486	10	14	9.50	43	27.00	19	17	19.05	21	M10X1.5	26	15,310	80
39N487	39N488	12	16	10.75	50	30.00	22	19	22.23	24	M12X1.75	27	17,373	95
39N489	39N490	14	19	12.25	57	34.75	25	22	25.40	27	M14X2.0	30	23,699	160
39N491	39N492	16	21	12.75	64	38.00	27	22	28.58	33	M16X2.0	33	25,162	215





**METRIC
ROD
ENDS**

2-Piece Stainless Steel Rod Ends with Stud Configuration

PTFE Line - Right & Left Hand Threads - Male & Female

Specifications

BALL

- 440C Stainless Steel
- Heat Treated
- Hard Chrome Plated
- Precision Ground

BODY

- 300 Series Stainless Steel
- PTFE Lined

STUD

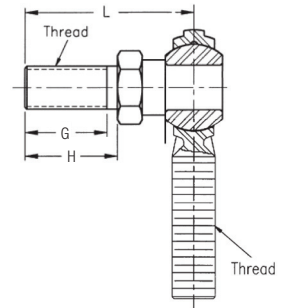
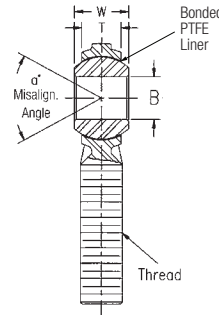
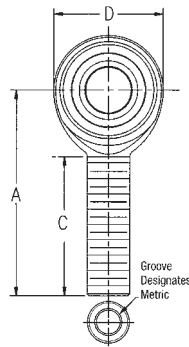
- Stainless Steel

ITEM NUMBER

DIMENSIONS IN MILLIMETERS

Male with Stud

Right Hand	Left Hand	B +.065 -0.12	W ±.12	T Ref.	A ±.40	D Ref.	Ball Dia. Ref.	C ± 1.00	Thread 6H	Misalign. Angle	Approx. Brg. Wgt. (grams)	G Min	H ±.13	L Ref.
39N522	39N523	5	8	5.75	33	16.00	11.10	20	M5X.08	22	12	10.0	13.0	27.26
39N524	39N525	6	9	6.25	36	19.00	12.70	22	M6X1.0	23	18	11.0	14.0	29.76
39N526	39N527	8	12	8.00	42	22.25	15.88	25	M8X1.25	28	31	14.0	17.5	36.76
39N528	39N529	10	14	9.50	48	27.00	19.05	29	M10X1.5	26	68	19.5	23.0	47.88
39N530	39N531	12	16	10.75	54	30.00	22.23	33	M12X1.75	27	78	24.5	28.5	57.38
39N532	39N533	14	19	12.25	60	34.75	25.40	36	M14X2.0	30	118	29.0	33.0	64.50
39N534	39N535	16	21	12.75	66	38.00	28.58	40	M16X2.0	33	173	34.0	38.0	74.00

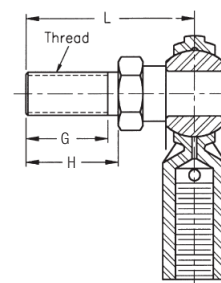
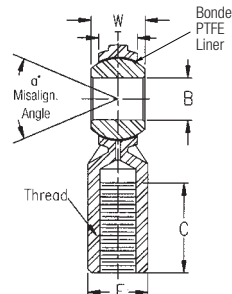
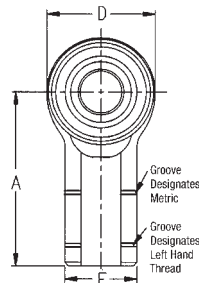


ITEM NUMBER

DIMENSIONS IN MILLIMETERS

Female with Stud

Right Hand	Left Hand	B +.065 -0.12	W ±.12	T Ref.	A ±.40	D Ref.	E ±.25	F ±.25	Ball Dia. Ref.	C ± 1.00	Thread 6H	Misalign. Angle	Approx. Brg. Wgt. (grams)	G Min	H ±.13	L Ref.
39N508	39N509	5	8	5.75	27	16.00	11	9	11.10	14	M5X.08	22	18	10.0	13.0	27.26
39N510	39N511	6	9	6.25	30	19.00	13	11	12.70	14	M6X1.0	23	25	11.0	14.0	29.76
39N512	39N513	8	12	8.00	36	22.25	16	14	15.88	17	M8X1.25	28	40	14.0	17.5	36.76
39N514	39N515	10	14	9.50	43	27.00	19	17	19.05	21	M10X1.5	26	80	19.5	23.0	47.88
39N516	39N517	12	16	10.75	50	30.00	22	19	22.23	24	M12X1.75	27	95	24.5	28.5	57.38
39N518	39N519	14	19	12.25	57	34.75	25	22	25.40	27	M14X2.0	30	160	29.0	33.0	64.50
39N520	39N521	16	21	12.75	64	38.00	27	22	28.58	33	M16X2.0	33	215	34.0	38.0	74.00



AVAILABLE THROUGH

GRAINGER

FOR THE ONES WHO GET IT DONE