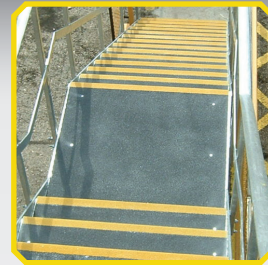


SAFESTEP™ FIBERGLASS REINFORCED PLASTIC ANTI-SLIP SOLUTIONS



**Instant heavy-duty slip resistance
for pedestrians, vehicles and forklifts.**

- Virtually indestructible fiberglass reinforced plastic
- Excellent chemical and corrosion resistance
- Extremely durable: lasts longer than tape

RUST-OLEUM®

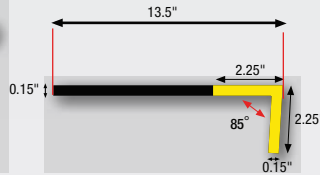
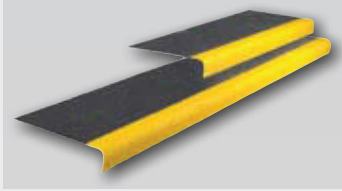


SAFESTEP™

FIBERGLASS REINFORCED PLASTIC ANTI-SLIP SOLUTIONS

Anti-Slip Step Covers

Heavy duty preformed Anti-Slip step cover providing a corrosion resistant surface for damaged, worn or slippery steps. (Glued and screw fixed).



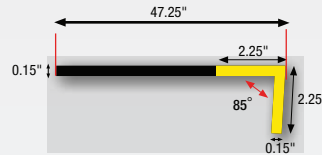
Available sizes (width & depth):

271792	32" x 10"	Black/Yellow
271795	36" x 10"	Black/Yellow
271796	48" x 10"	Black/Yellow
271797	59" x 10"	Black/Yellow
271798	32" x 13.5"	Black/Yellow
271799	36" x 13.5"	Black/Yellow
271800	48" x 13.5"	Black/Yellow
271801	59" x 13.5"	Black/Yellow



Anti-Slip Landing Covers

Highly versatile, heavy duty preformed landing cover. Provides a corrosion resistant surface for damaged or worn areas. (Glued and screw fixed).



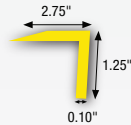
Available sizes (width & depth):

271816	47.25" x 47.25"	Black/Yellow
--------	-----------------	--------------



Anti-Slip Step Edge

Heavy duty, high visibility, slip-resistant step edges. (Glued and screw fixed).



Available sizes (width & depth):

271818	32" x 2.75" x 1.25"	Yellow
271819	36" x 2.75" x 1.25"	Yellow
271820	48" x 2.75" x 1.25"	Yellow
271821	59" x 2.75" x 1.25"	Yellow



Anti-Slip Sheeting

Heavy duty sheets with a tough anti-slip surface. Highly versatile and long-lasting fiberglass sheets for ramps, walkways, etc. (Glued and screw fixed).



Sheeting is available in 3 colors:
Yellow, Black and Gray

Available sizes (width & depth):

271810	47" x 47"	Black
271811	47" x 47"	Safety Yellow
271812	47" x 47"	Gray
271813	47" x 96"	Black
271814	47" x 96"	Safety Yellow
271815	47" x 96"	Gray

