



P: 800.961.7370
www.solerpalau-usa.com

MODEL PV-100xps

Dryer Booster Fan

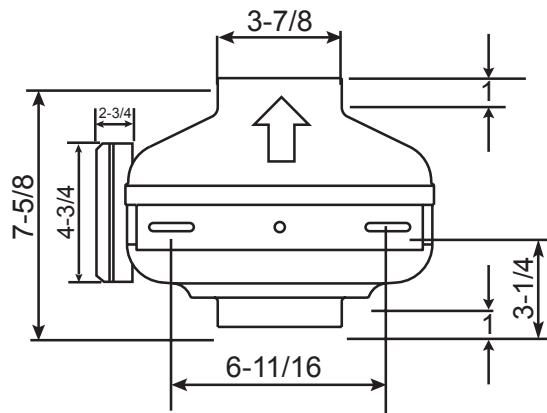
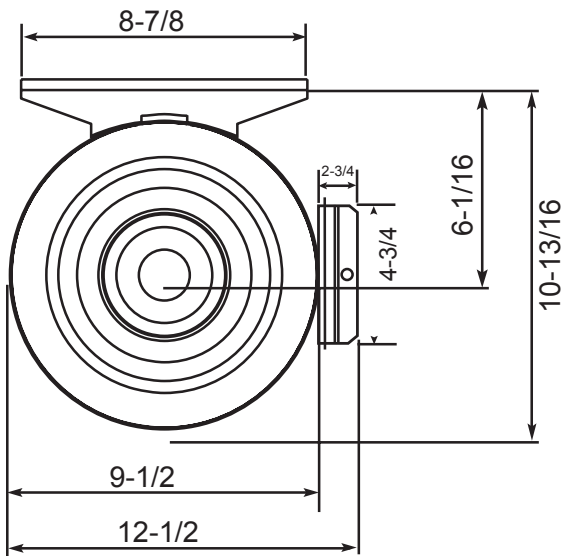


Standard Features

- Utilizes the highest quality motorized impeller available
- Incorporates a Class F insulation system for extended product life
- Add up to 80 equivalent feet to the exhaust duct without compromising drying efficiency
- Epoxy coated metal housing for added durability
- Supplied with pre-wired 6' appliance cord
- ETL Listed to UL Standards 507 and 705

Model	Avg. Weight lbs
PV-100xps	8

Dimensions in inches



FAN DATA					
Fan No.	Qty.	Model No.	CFM	SP	RPM

MOTOR DATA					
AMPS	RPM	VOLTS	PH	HZ	ENCLOSURE

For more information contact us at www.solerpalau-usa.com or 1.800.961.7370 for additional submittal drawings.

Soler & Palau will not be responsible for fabrication changes or errors resulting from customer use of a non-current submittal drawing.

ACCESSORIES	1	2	3	4	5	REMARKS

PROJECT: _____ CONTRACTOR: _____
 LOCATION: _____ REVISION DATE: _____
 FORM NO.: _____ SUBMITTED BY: _____ DATE: _____
 ENGINEER: _____ APPROVED BY: _____ DATE: _____