

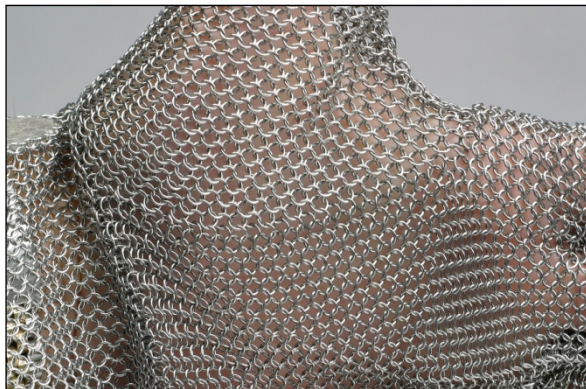
# HOW GOOD IS THE "JOINING" SEAM?

Most other mesh gloves are assembled with joining rings simply attaching adjacent parts. As a result, the gaps at glove seams are as large as **6.3mm** through which a knife point could protrude.

Niroflex2000 gloves are assembled by weaving the joining ring around (over and under) at least four adjacent rings, in exactly the same way as the basic mesh material is interlocked.

**As a result, the seams on Niroflex2000 gloves are as strong, safe and secure as any other part of the glove and the maximum gap is less than 3.1mm.**

**niroflex 2000®**



*"OTHER" MESH GLOVES*

