



SERVICE PARTS LIST

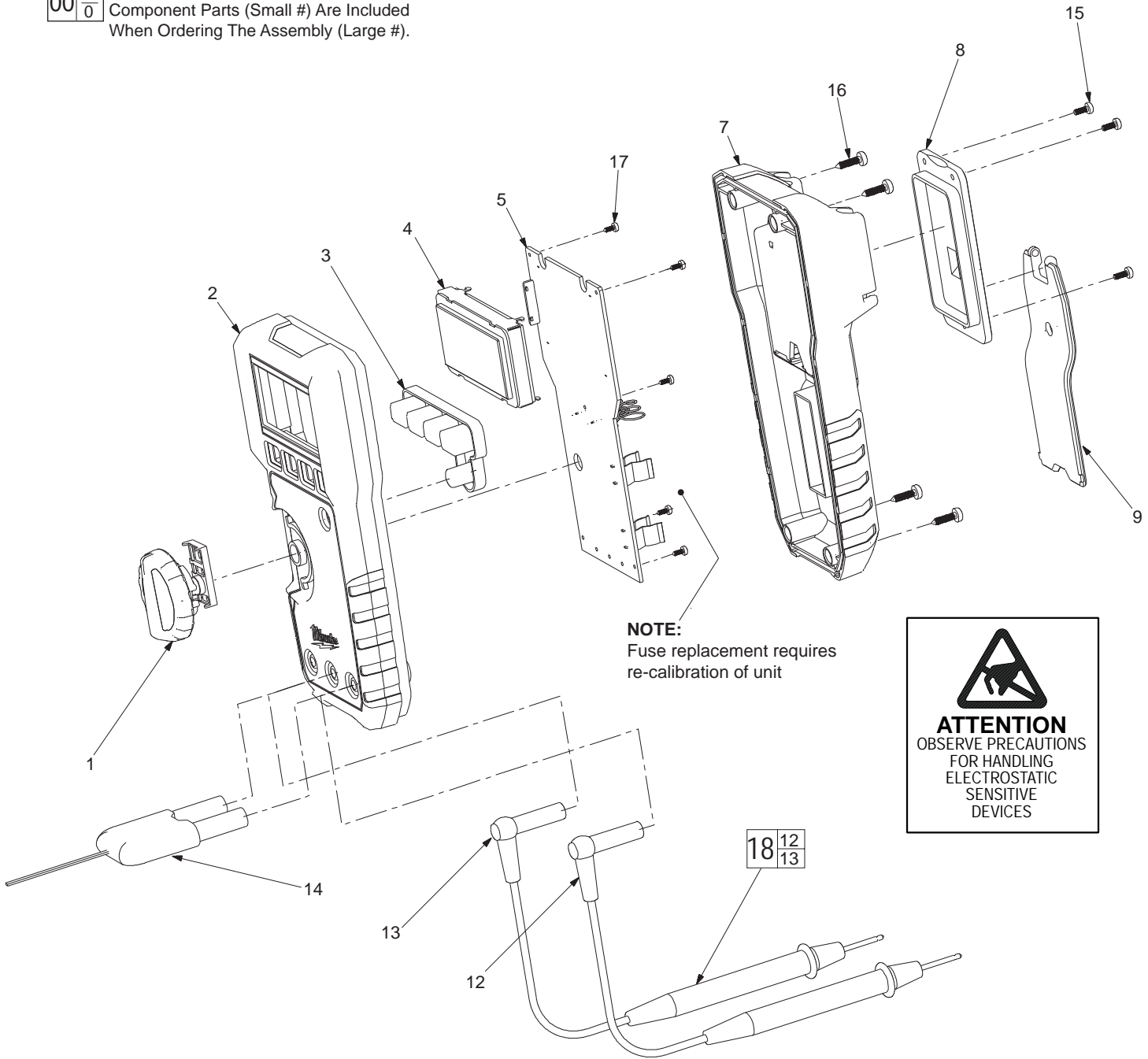
BULLETIN NO.
54-07-2201

SPECIFY CATALOG NO. AND SERIAL NO. WHEN ORDERING PARTS		REVISED BULLETIN	DATE
DIGITAL MULTIMETER			June 2012
CATALOG NO.	2217-20	SERIAL NUMBER	B83B
WIRING INSTRUCTION			

EXAMPLE:

00	0
----	---

 Component Parts (Small #) Are Included
 When Ordering The Assembly (Large #).



NOTE:
Fuse replacement requires re-calibration of unit



FIG.	PART NO.	DESCRIPTION OF PART	NO. REQ.
1	-----	Rotary Switch	(1)
2	-----	Top Case	(1)
3	-----	Rubber Keypad	(1)
4	-----	LCD Module	(1)
5	-----	Main PCA	(1)
7	-----	Bottom Case	(1)
8	31-21-0035	Battery Door	(1)
9	31-70-0155	Bale, DMM Stand	(1)
12	-----	Red Test Lead	(1)
13	-----	Black Test Lead	(1)
14	49-77-2001	K-Type Thermocouple	(1)
15	05-81-0260	Battery Door Screw	(3)
16	05-81-0265	Bottom Case Screw	(4)
17	-----	PCA Screw	(5)
18	49-77-1001	Test Lead Set (Contains 12 & 13)	(1)