

ABANAKI
CORPORATION
17387 Munn Road
Chagrin Falls, OH 44023
Phone: (440) 543-7400
Fax: (440) 543-7404
1-800-358-SKIM (7546)
www.abanaki.com

Stainless Steel Mighty-Mini[®] Oil Skimmer w/Timer Installation Instructions

Step 1.

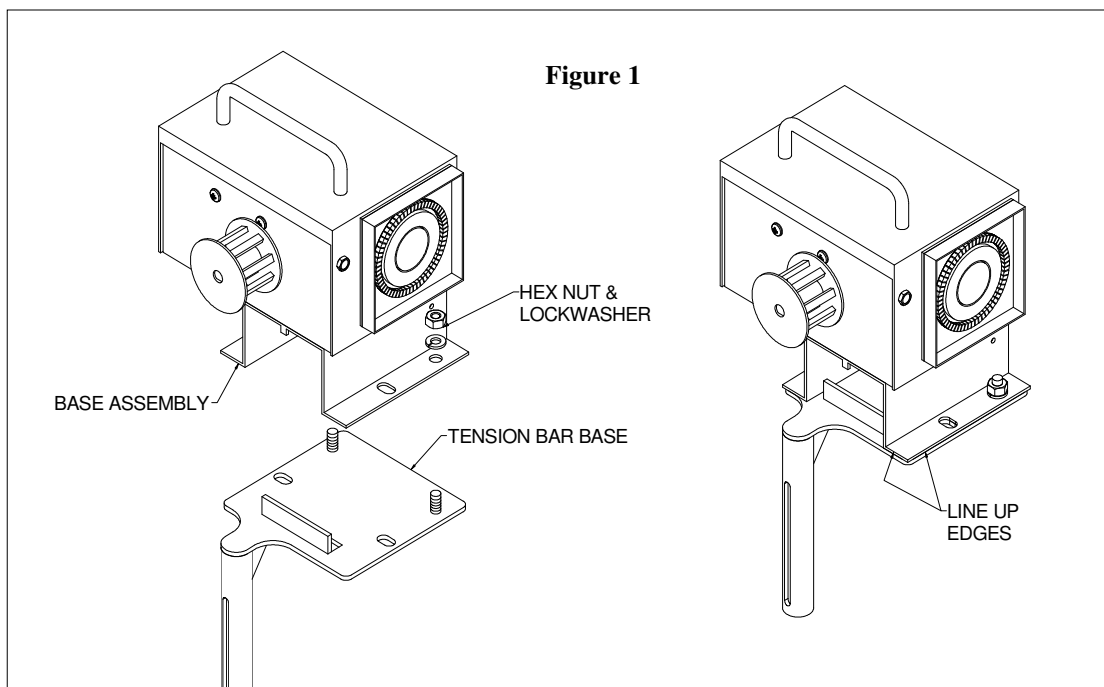
Open and unpack your **Stainless Steel Mighty Mini[®]** Oil Skimmer carton. If you ordered the optional ODM-100 Oil Concentrator Decanter, there will be a separate carton. Otherwise all Mighty Mini components are in a single carton. Check the contents of the carton; you should have:

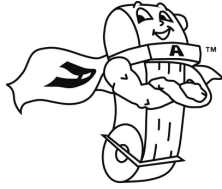
1. Base Assembly with Timer.
2. Tension Bar Base.
3. Stabilizer Bar.
4. Removable Trough
5. Plastic Bag w/Tension Spring, 2 Hex Nuts, 2 Lockwashers, 1 #10-32x3/8" Lg. Screw (for trough), 1 #8-32x1/2" Lg. Screw (for stabilizer bar), and 2 Wiper Blades.
6. Belt in either metal, elastomer or poly-material.
7. 3 foot clear discharge hose and clamp.
8. *Optional* dual position mounting bracket. (See Fig. 7)

If any of these items are missing, contact **ABANAKI** immediately for replacement.

Step 2. Base Installation: (See Fig. 1)

1. Attach Base Assembly to Tension Bar Base with 2 Hex Nuts and 2 Lockwashers.
2. Make sure edges of Base Assembly and Tension Bar Base line-up as shown in figure 1.





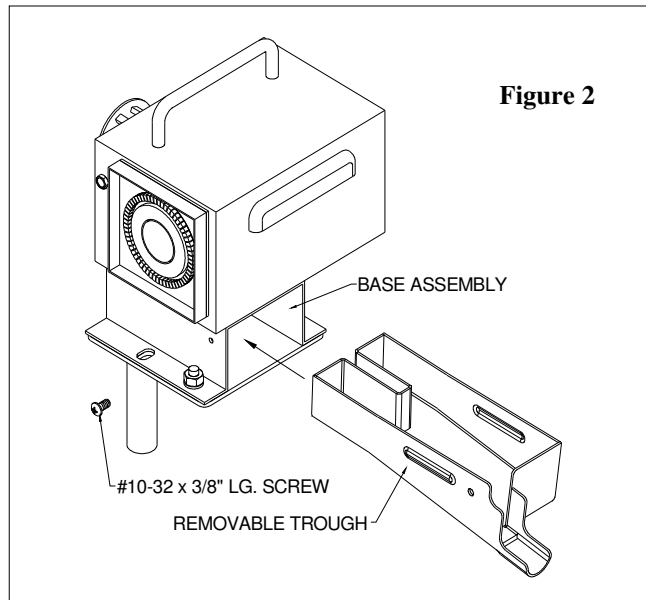
ABANAKI
CORPORATION

17387 Munn Road
Chagrin Falls, OH 44023
Phone: (440) 543-7400
Fax: (440) 543-7404
1-800-358-SKIM (7546)
www.abanaki.com

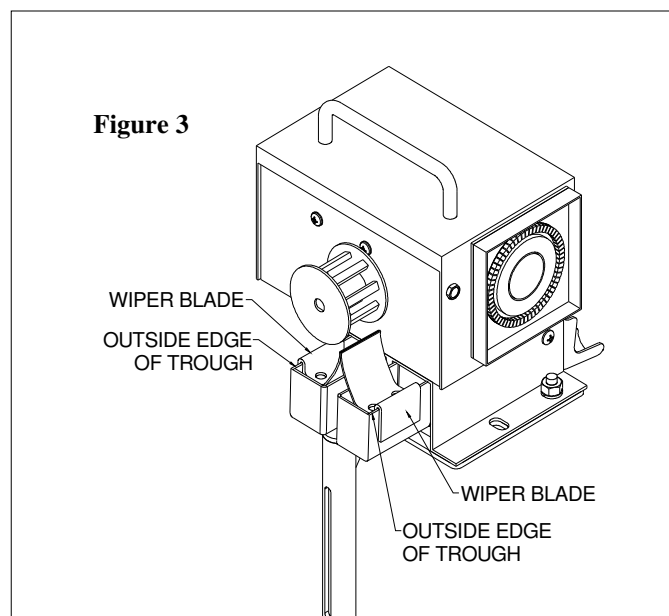
Stainless Steel Mighty-Mini[®] Oil Skimmer w/Timer Installation Instructions

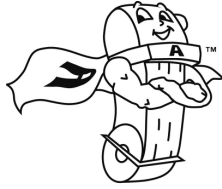
Step 3. Inserting Removable Trough: (See Fig. 2)

1. Slide Removable Trough into Base Assembly from back side.
2. Fasten Trough to Base Assembly with #10-32 x 3/8" Lg. Screw



Step 4. Clip Wiper Blades onto outside edges of Trough. (See Fig. 3)





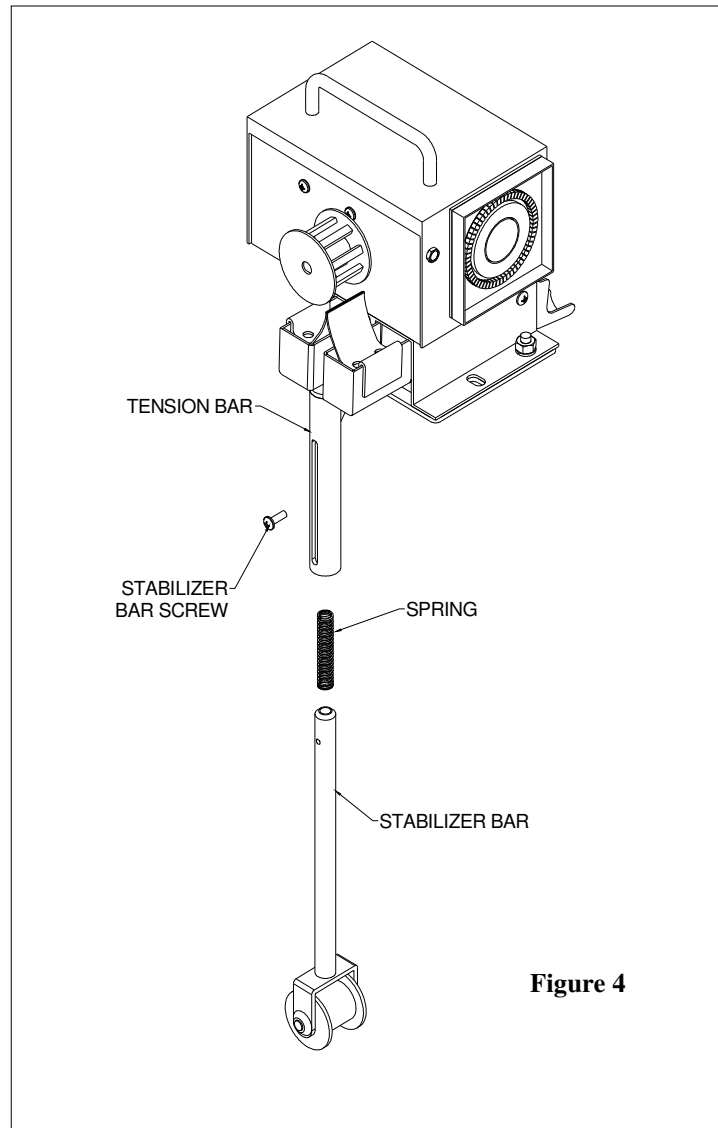
ABANAKI
CORPORATION

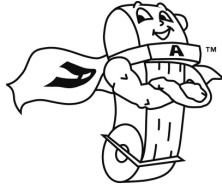
17387 Munn Road
Chagrin Falls, OH 44023
Phone: (440) 543-7400
Fax: (440) 543-7404
1-800-358-SKIM (7546)
www.abanaki.com

Stainless Steel Mighty-Mini[®] Oil Skimmer w/Timer Installation Instructions

Step 5. Stabilizer Bar Assembly:

1. Insert Spring and then Stabilizer Bar into Tension Bar. Tapped hole in top of Stabilizer Bar should line up with slot in Tension Bar.
2. Insert the #8-32 x 1/2" lg. screw thru the Tension Bar slot and into Stabilizer Bar. DO NOT tighten down screw. Stabilizer Bar should move freely inside Tension Bar. (See Fig. 4)





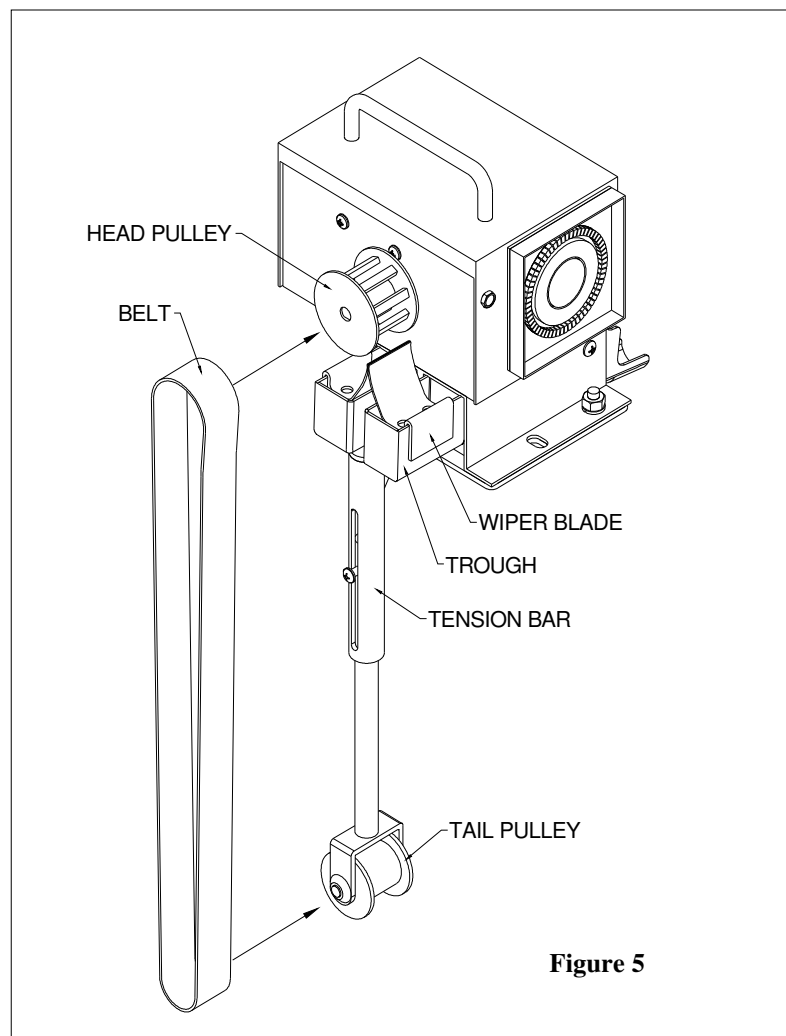
ABANAKI
CORPORATION

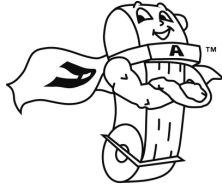
17387 Munn Road
Chagrin Falls, OH 44023
Phone: (440) 543-7400
Fax: (440) 543-7404
1-800-358-SKIM (7546)
www.abanaki.com

Stainless Steel Mighty-Mini[®] Oil Skimmer w/Timer Installation Instructions

Step 6. Installing the belt: (See Fig. 5)

1. Remove the belt from shipping bag.
2. When handling metal belt, use heavy work gloves to avoid cuts or injury from the extremely sharp edges of the belt.
3. When handling the belt be very careful not to dent, crease, or twist it in any way as to cause damage which will result in premature belt wear.
4. Loop the belt over the tail pulley.
5. Place the tail pulley on a flat surface and press down from the top so that the spring in the tension bar is compressed. Guide the belt between the wiper blades and over the head pulley.
6. Release the tension on the tail pulley.



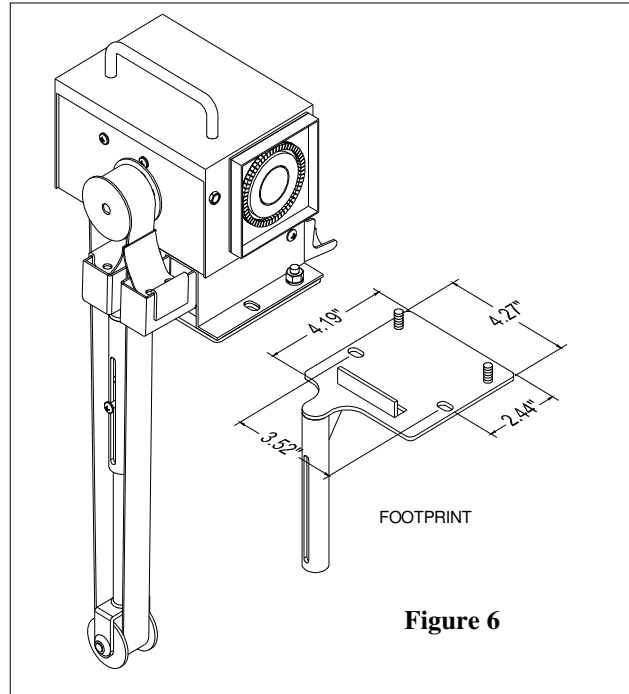


ABANAKI
CORPORATION
17387 Munn Road
Chagrin Falls, OH 44023
Phone: (440) 543-7400
Fax: (440) 543-7404
1-800-358-SKIM (7546)
www.abanaki.com

Stainless Steel Mighty-Mini[®] Oil Skimmer w/Timer Installation Instructions

Step 7. Mounting the Mighty Mini:

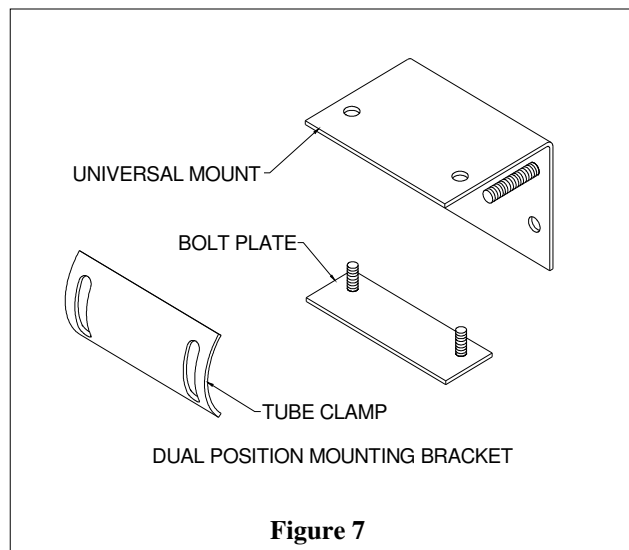
1. Flat Mount - Simply mount the unit on a clean level surface with two 1/4-20 bolts. **(See Fig. 6)**
2. Optional Dual Position Mounting Bracket - for use when mounting unit to a vertical wall, flanged tank or open top drum. Note: When mounting with the bracket, the bolt plate is used to secure the Mighty Mini. **(See Fig. 7)** The bolt plate is always used on the horizontal surface of the bracket. **(See Figures 9 & 10)**
3. When mounting with the optional ODM-100 Oil Concentrator, the ODM-100 adapter bracket is to be inserted between the skimmer base and the universal mounting bracket using the studs of the bolt plate. Align the holes so that the bolts will secure the entire skimming system. **(See Fig. 11)**

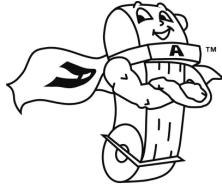


Step 8. Attaching the discharge hose:

1. Slide the hose over the entire discharge trough. Hint: Apply water to the end of the tubing. This will allow the tubing to slide easier onto the discharge trough.

Attach clamp to hose where hose and trough overlap. Use a pair of pliers to tighten clamp. To remove clamp simply slide clamp teeth apart.





ABANAKI
CORPORATION

17387 Munn Road
Chagrin Falls, OH 44023
Phone: (440) 543-7400
Fax: (440) 543-7404
1-800-358-SKIM (7546)
www.abanaki.com

Stainless Steel Mighty-Mini[®] Oil Skimmer w/Timer Installation Instructions

Step 9. Setting the Timer: (See Fig. 8)

Turn the time dial to the time of day. Set the desired switching program by pushing the switch actuators toward the center of the dial. Each segment equals 15 minutes. **Note: Always turn the dial in a clockwise direction!**

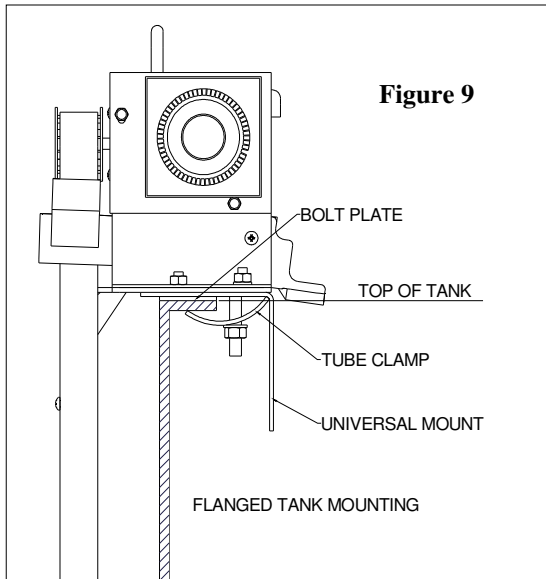
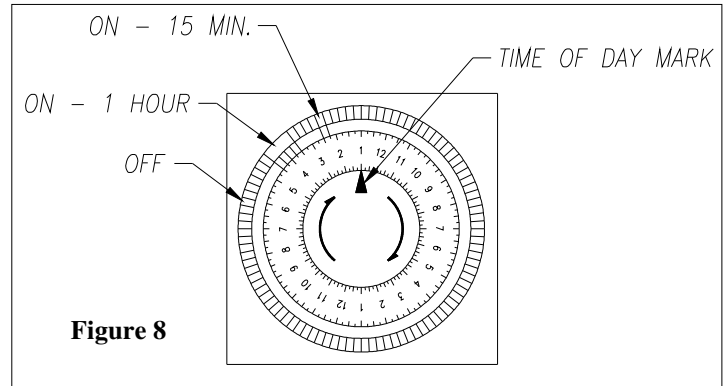


Figure 8

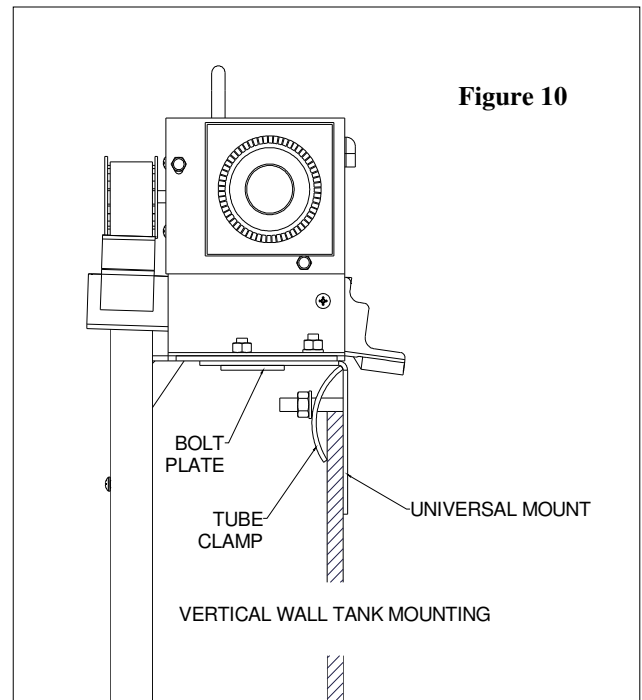


Figure 10

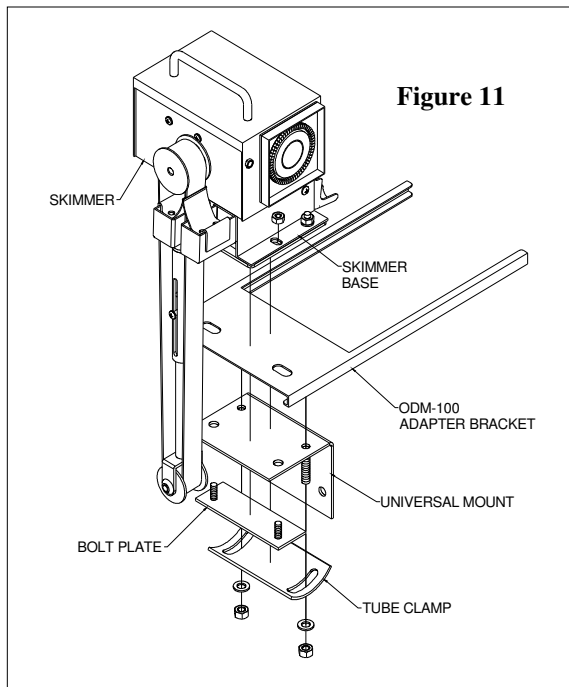
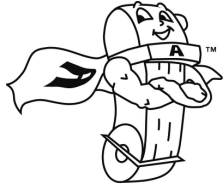


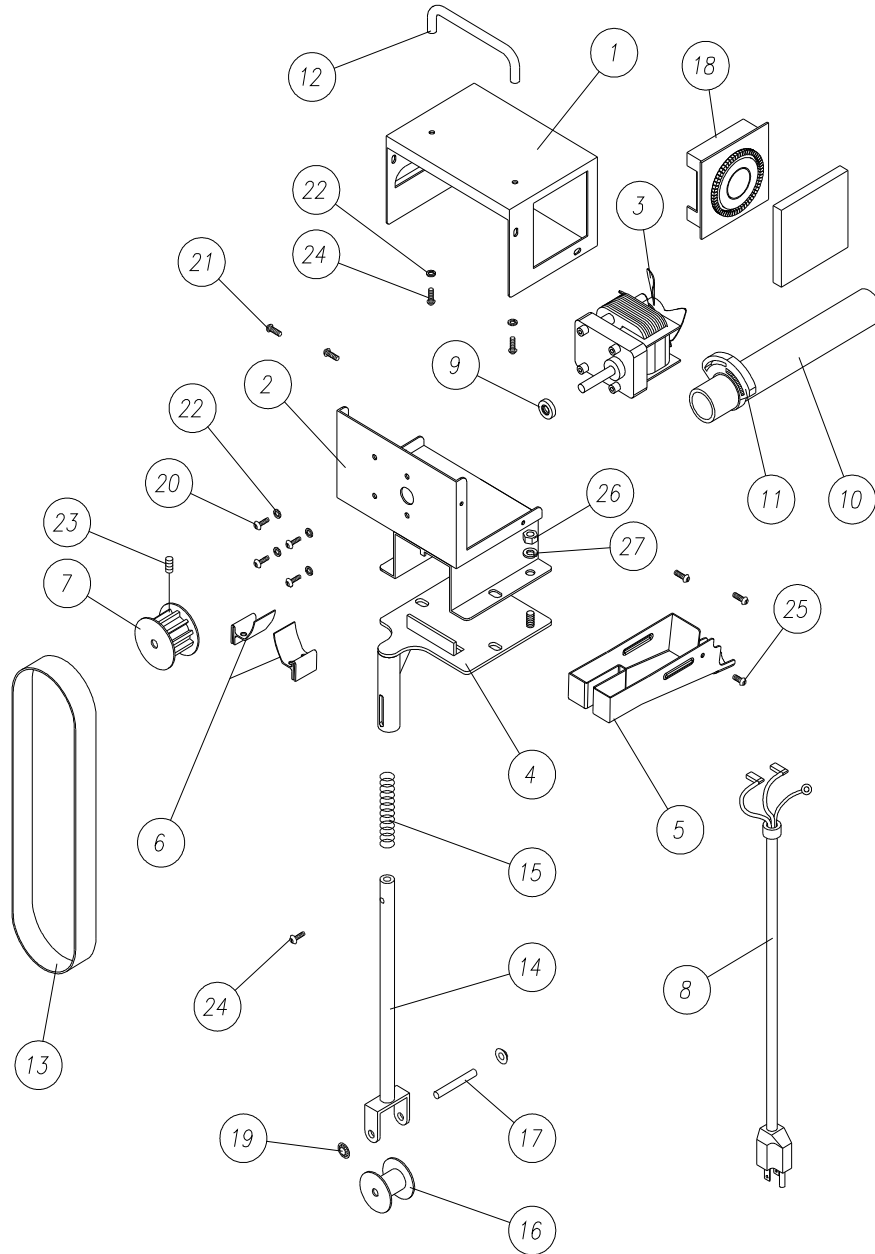
Figure 11



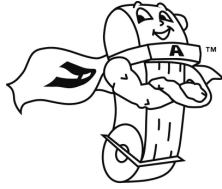
ABANAKI
CORPORATION

17387 Munn Road
Chagrin Falls, OH 44023
Phone: (440) 543-7400
Fax: (440) 543-7404
1-800-358-SKIM (7546)
www.abanaki.com

Stainless Steel Mighty-Mini[®] Oil Skimmer w/Timer Installation Instructions



NOTE: DO NOT TIGHTEN DOWN SCREW (ITEM 24) LOCATED ON THE STABILIZER BAR (ITEM 14)
(Part descriptions listed on page 8)



ABANAKI
CORPORATION

17387 Munn Road
Chagrin Falls, OH 44023
Phone: (440) 543-7400
Fax: (440) 543-7404
1-800-358-SKIM (7546)
www.abanaki.com

Stainless Steel Mighty-Mini® Oil Skimmer w/Timer

Installation Instructions

Item	Qty	Part Name	Part Number	Item	Qty	Part Name	Part Number
1	1	Base Cover	PMMS-01	15	1	S.S. Spring	PMM-51
2	1	Base		16	1	1" Tail Pulley UHMW 2" Tail Pulley UHMW	PMM1-08 PMM2-08
3	1	Fan Cooled Motor 110V Fan Cooled Motor 220V	M13-AM M13-BM	17	1	1/4" Dia. x 1-7/8" Lg. S.S. Pin 2-7/8" Lg. for 2" unit	PMM-18 PMM2-18
4	1	Tension Bar Base 1" for 6" unit 1" for 12, 18 & 24" units 2" for 6" unit 2" for 12, 18 & 24" units	PMMS-03B PMMS-03A PMMS-03D PMMS-03C	18	1	110V Timer 220V Timer	E23-1 E23-2
5	1	1" Trough 2" Trough	PMMS1-05 PMMS2-05	19	2	1/4" Flat Round S.S. Push Nut	PMM-18A
6	1	1" Wiper Blade Set 2" Wiper Blade Set	PMM-09A1 PMM-09B1	20	4	#8-32 x 1/4" Lg. S.S. Screw	N/A
7	1	1" Head Pulley 2" Head Pulley	PMMS1-07 PMMS2-07	21	4	#8-32 x 3/8" Hex S.S. Screw	N/A
8	1	8' 3 Prong cord	E20A	22	6	#8 S.S. Lock Washer	N/A
9	1	Shaft Seal	PMM-42	23	1	1/4-20 x 1/2" Lg. SS Screw	N/A
10	1	Clear Discharge Hose	PMM-10	24	3	#8-32 x 1/2" S.S. Pan Head Screw	N/A
11	1	Hose Clamp	PMM-10A	25	1	#10-32 x 1/2" Lg. Screw	N/A
12	1	S.S. Handle	PMMS-02	26	2	1/4-20 Hex Nut	N/A
13	1	1" Wide Belt (S) - Steel Belt (E) - Elastomer (P) - Poly (F) - Fuzzy (L) - Loop Fuzzy (X) - X-X Poly 2" Wide Belt (S) - Steel Belt (E) - Elastomer (P) - Poly (F) - Fuzzy (L) - Loop Fuzzy (X) - X-X Poly	BMMS-06 to BMMS-24 BMME-06 to BMME-24 BMMP-06 to BMMP-24 BMMF-06 to BMMF-24 BMML-06 to BMML-24 BMMX-06 to BMMX-24 BMM2S-06 to BMM2S-24 BMM2E-06 to BMM2E-24 BMM2P-06 to BMM2P-24 BMM2F-06 to BMM2F-24 BMM2L-06 to BMM2L-24 BMM2X-06 to BMM2X-24	27	2	1/4" Lockwasher	N/A
14	1	Stabilizer Bar 1" Unit Stabilizer Bar 2" Unit	PMMS1-06A (1"x6") PMMS1-06B (1"x12") PMMS1-06C (1"x18") PMMS1-06D (1"x24") PMMS2-06A (2"x6") PMMS2-06B (2"x12") PMMS2-06C (2"x18") PMMS2-06D (2"x24")				