

BEMIS. Medic-Aid[®] Toilet Seats



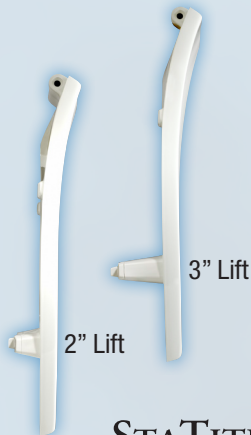
Bemis Medic-Aid[®] toilet seats are designed for individuals with special needs, keeping comfort and convenience in mind. These seats contain DuraGuard[®], an anti-microbial agent that, with regular and thorough cleaning, inhibits the growth of stain and odor-causing bacteria. Seats are constructed of heavy-duty plastic, stainless steel hinges and STA-TITE[®] Commercial Fastening System[™] for durability and stability.

Medic-Aid[®] seats are the ideal choice for use in hospitals and clinics, assisted-living and long-term care facilities, as well as in the home setting.

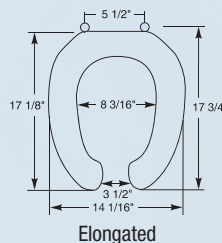
Medic-Aid[®] Lift Seats

Raised Plastic Toilet Seats with DuraGuard[®], an Anti-Microbial Agent.

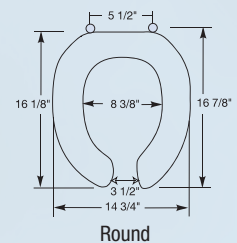
- Meet ANSI Z124.5 Standards.



STATITE[®]

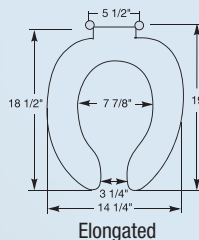


Elongated

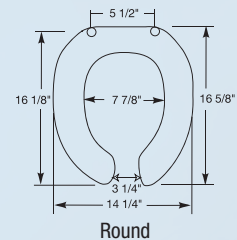


Round

Models: 2L2150T – 2" Lift (Elongated) or 3L2150T – 3" Lift (Elongated)
2L2050T – 2" Lift (Round) or 3L2050T – 3" Lift (Round)
 Open Front with Cover



Elongated



Round

Models: 2L2155T – 2" Lift (Elongated) or 3L2155T – 3" Lift (Elongated)
2L2055T – 2" Lift (Round) or 3L2055T – 3" Lift (Round)
 Open Front less Cover

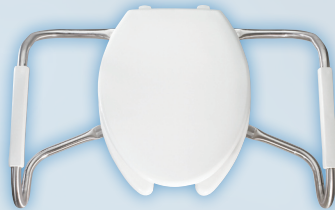
Medic-Aid® with Safety Side Arms

Plastic Toilet Seats with DuraGuard®, an Anti-Microbial Agent and Stainless Steel Side Arms and Textured Plastic Handgrips with Finger Grooves.

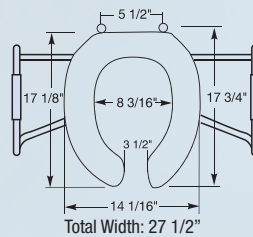
- Meet ANSI Z124.5 Standards.
- Handrails Meet ADA Accessibility Guidelines for Buildings and Facilities (ADAAG), section 4.26.3.



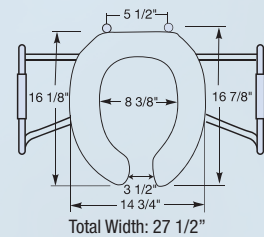
STATITE®



**Models: MA2150T (Elongated)
MA2050T (Round)**
Open Front with Cover



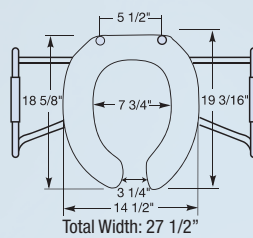
Elongated



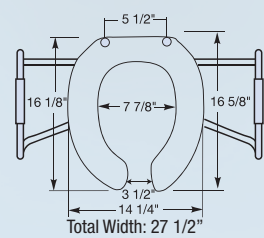
Round



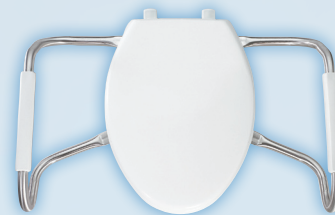
**Models: MA2155T (Elongated)
MA2055T (Round)**
Open Front less Cover



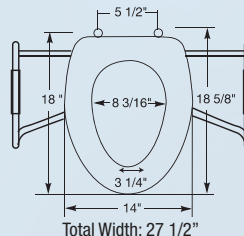
Elongated



Round



Models: MA2100T (Elongated Only)
Closed Front with Cover



Elongated

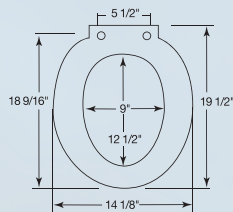
Medic-Aid® Lift Spacer

Toilet Seat Spacer with DuraGuard®, an Anti-Microbial Agent.

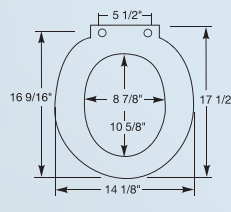
- Meet ANSI Z124.5 Standards.
- Lift is 3" high, allowing additional 4" of height above rim once seat is installed.
- 300 Series stainless steel mounting bracket allows both lift and seat to be raised to vertical position for cleaning.



Models: 4LE (Elongated) 4LR (Round)
Closed Front with Hollow Core



Elongated



Round



What is STA-TITE?

A breakthrough in toilet seat installation improves mounting hardware from top to bottom, from inside out. It's a simpler, more secure system that prevents toilet seat loosening.

It's easier to use too. Just tighten the lower portions of the innovative one-piece nuts. They shear when properly tightened. A finned bushing securely centers bolts in mounting holes preventing shifting.

Easier, Faster, Secure!