

**ABANAKI**  
CORPORATION  
17387 Munn Road  
Chagrin Falls, OH 44023  
Phone: (440) 543-7400  
Fax: (440) 543-7404  
**1-800-358-SKIM (7546)**  
[www.abanaki.com](http://www.abanaki.com)

# Lil' Blue<sup>®</sup> Oil Skimmer Installation Instructions

## Step 1.

Open and unpack your Lil' Blue<sup>®</sup> Oil Skimmer carton. If you ordered the optional ODM-100 Oil Concentrator Decanter, there will be a separate carton. Otherwise all skimmer components are in a single carton. Check the contents of the carton; you should have:

1. Lil' Blue Oil Skimmer.
2. Stabilizer Bar with Tail Pulley.
3. Plastic bag with stabilizer spring and screw.
4. Elastomer material belt.
5. 3 foot clear discharge hose.
6. (If ordered) Optional dual position mounting bracket. (See Fig. 7)

If any of these items are missing, contact **ABANAKI** immediately for replacement.

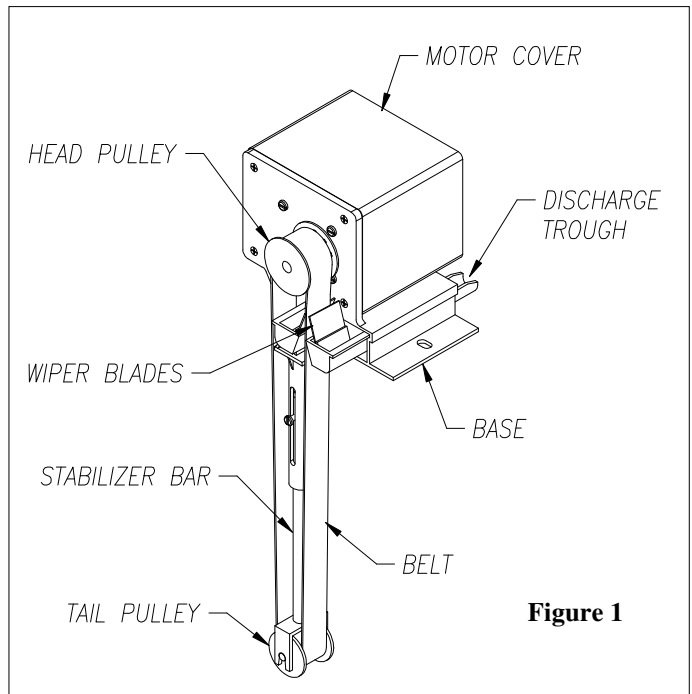
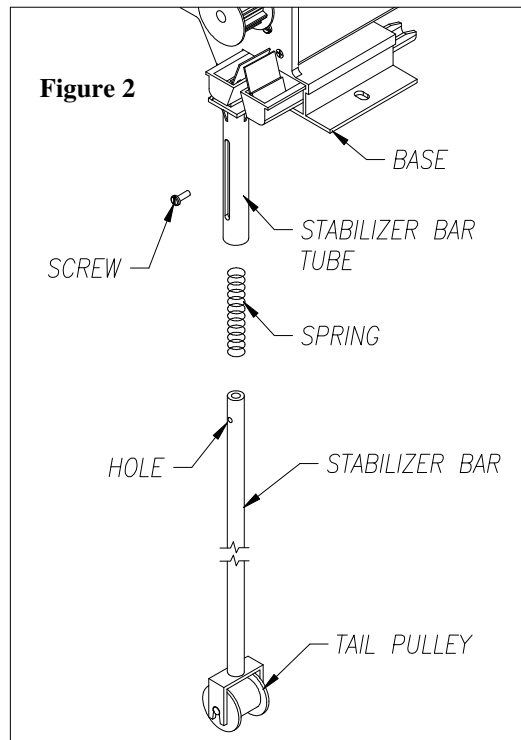
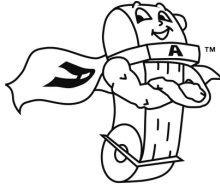


Figure 1



## Step 2 Installing Stabilizer Bar: (See Fig. 2)

1. Insert spring and stabilizer bar into stabilizer bar tube.
2. Rotate stabilizer bar until hole is showing thru front of stabilizer tube slot.
3. Thread screw into hole. **DO NOT TIGHTEN DOWN.**



**ABANAKI**  
CORPORATION  
17387 Munn Road  
Chagrin Falls, OH 44023  
Phone: (440) 543-7400  
Fax: (440) 543-7404  
**1-800-358-SKIM (7546)**  
[www.abanaki.com](http://www.abanaki.com)

# Lil' Blue<sup>®</sup> Oil Skimmer Installation Instructions

## Step 3. Installing the belt: (See Fig. 3)

1. Remove the belt from shipping bag.
2. Loop the belt over the tail pulley.
3. Place the tail pulley on a flat surface and press down from the top so that the spring in the stabilizer bar is compressed. Guide the belt between the wiper blades and over the head pulley.
4. Release the tension on the tail pulley.

## Step 4. Mounting the Oil Skimmer:

1. Flat Mount - Simply mount the unit on a clean level surface with two 1/4-20 bolts. (See Fig. 4)
2. Optional Dual Position Mounting Bracket - for use when mounting unit to a vertical wall, flanged tank or open top drum. Note: When mounting with the bracket, the bolt plate is used to secure the skimmer. (See Fig. 7) The bolt plate is always used on the horizontal surface of the bracket. (See Figures 5 & 6)
3. When mounting with the optional ODM-100 Oil Concentrator, the ODM-100 adapter bracket is to be inserted between the skimmer base and the universal mounting bracket using the studs of the bolt plate. Align the holes so that the bolts will secure the entire skimming system. (See Fig. 8)

**Step 5.** Slide the discharge hose over the entire discharge trough.

**Step 6.** Plug unit into grounded outlet.

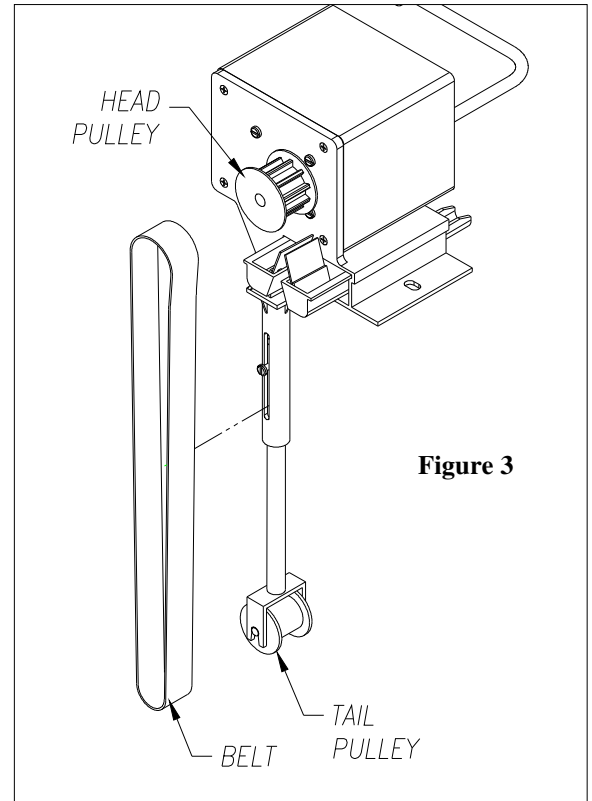


Figure 3

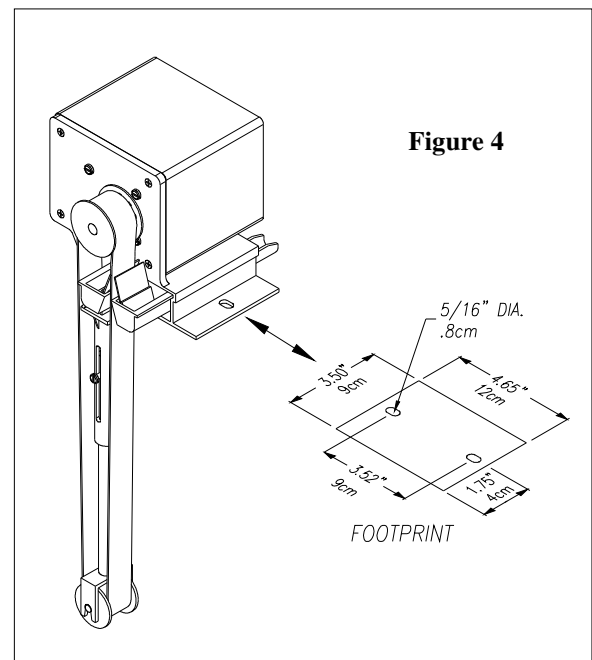
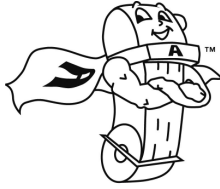
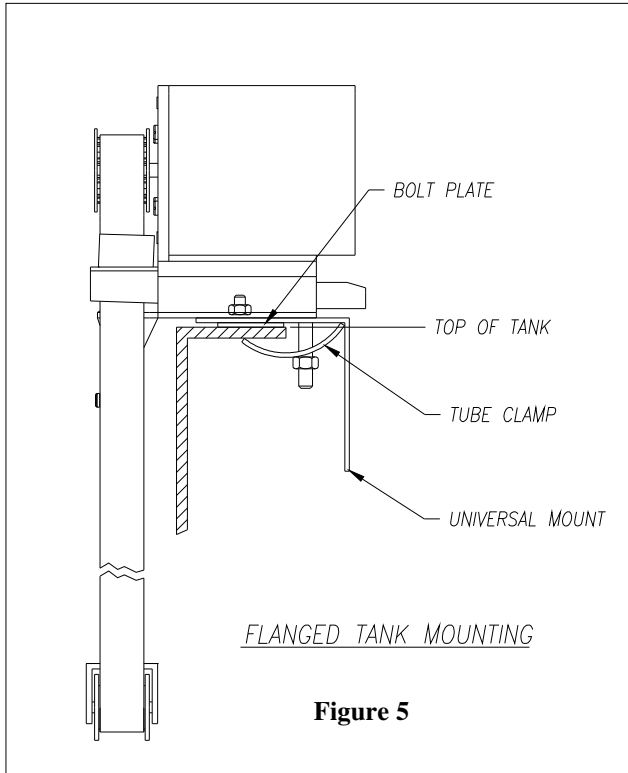


Figure 4

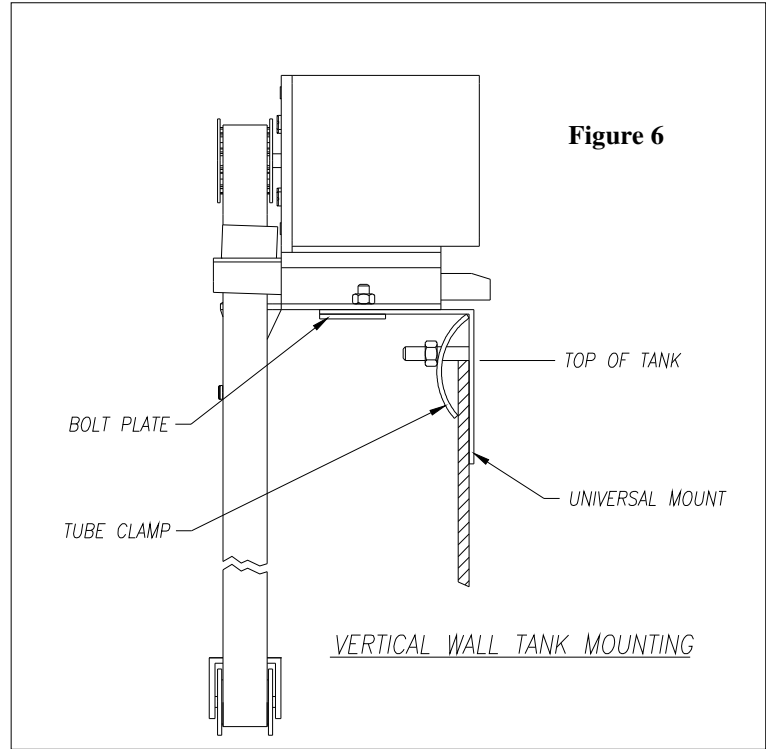


**ABANAKI**  
CORPORATION  
17387 Munn Road  
Chagrin Falls, OH 44023  
Phone: (440) 543-7400  
Fax: (440) 543-7404  
**1-800-358-SKIM (7546)**  
[www.abanaki.com](http://www.abanaki.com)

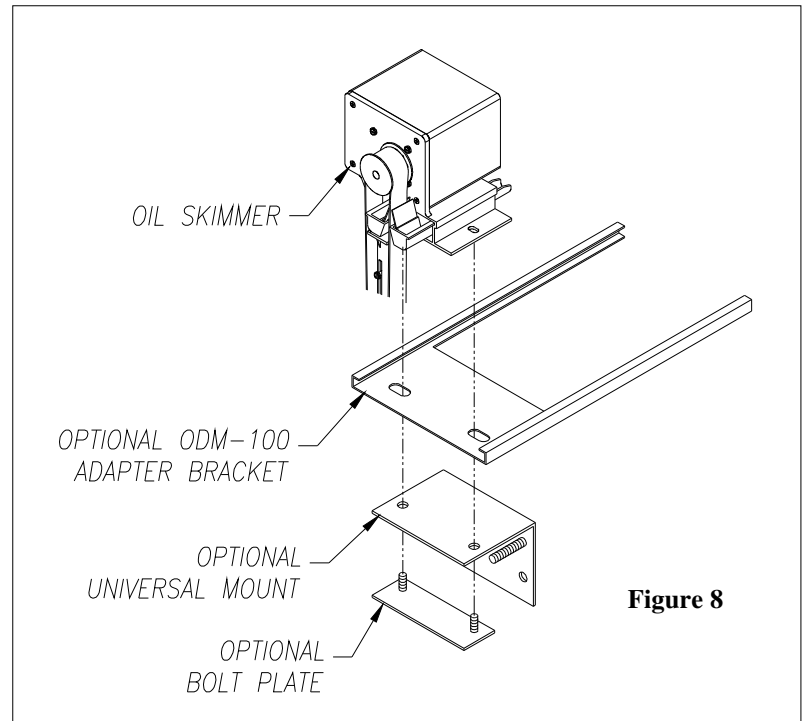
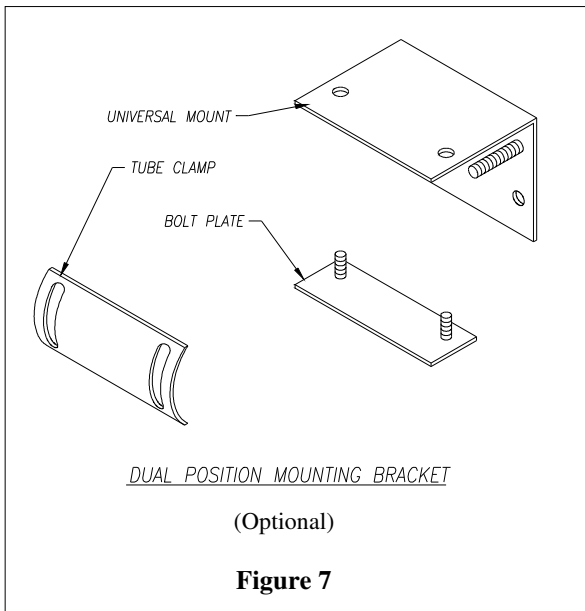
# Lil' Blue<sup>®</sup> Oil Skimmer Installation Instructions

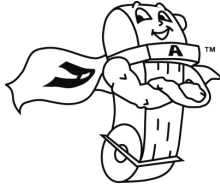


**Figure 5**



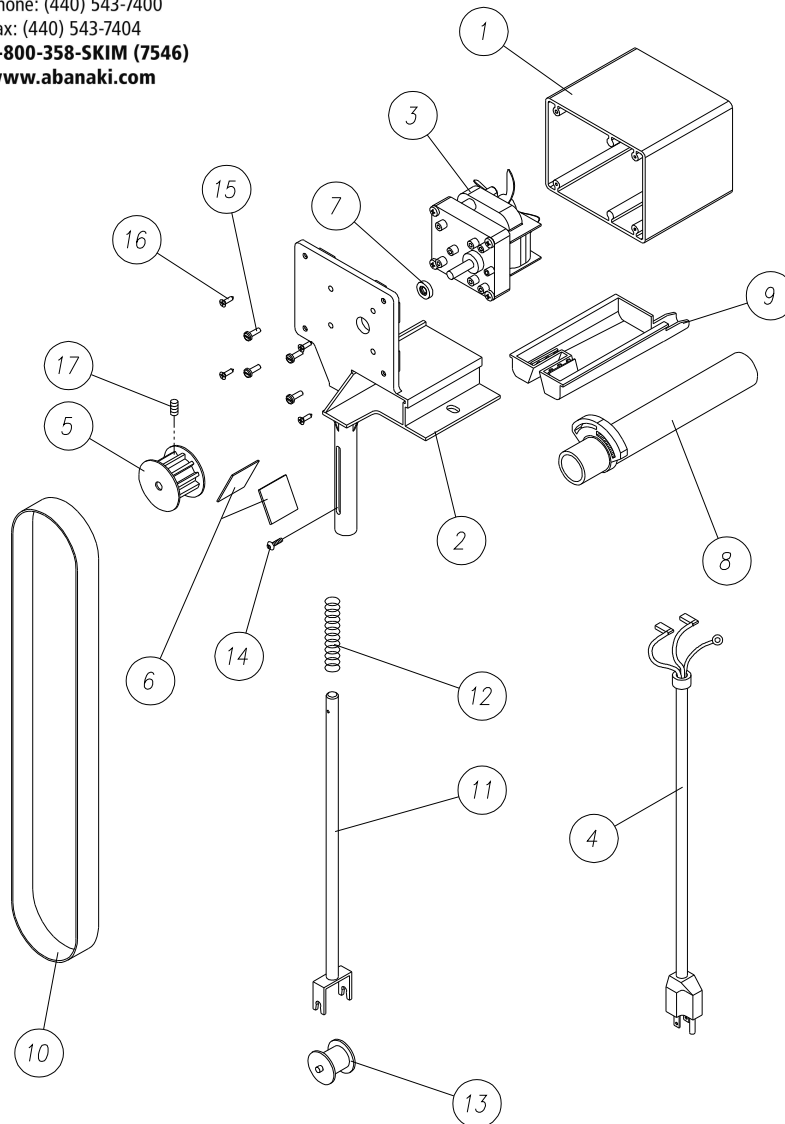
**Figure 6**





**ABANAKI**  
CORPORATION  
17387 Munn Road  
Chagrin Falls, OH 44023  
Phone: (440) 543-7400  
Fax: (440) 543-7404  
**1-800-358-SKIM (7546)**  
[www.abanaki.com](http://www.abanaki.com)

# Lil' Blue<sup>®</sup> Oil Skimmer Installation Instructions



**NOTE: DO NOT TIGHTEN DOWN SCREW (ITEM 14) LOCATED ON THE STABILIZER BAR (ITEM 11)**

Item	Qty	Part Name	Part Number	Item	Qty	Part Name	Part Number
1	1	Motor Box Cover	PLB-04	10	1	1" Wide Elastomer Belt 8" Unit	BLBE-08
						1" Wide Elastomer Belt 12" Unit	BLBE-12
						1" Wide Elastomer Belt 18" Unit	BLBE-18
						1" Wide Elastomer Belt 24" Unit	BLBE-24
2	1	Base	PLB-01	11	1	Stabilizer Bar 8" Unit	PLB-06A
						Stabilizer Bar 12" Unit	PLB-06B
						Stabilizer Bar 18" Unit	PLB-06C
						Stabilizer Bar 24" Unit	PLB-06D
3	1	Fan Cooled Motor 110V Fan Cooled Motor 220V	M13-A M13-B	12	1	Spring	PLB-51
4	1	8' 3 Prong cord	E20A	13	1	1" Tail Pulley	PLB-08
5	1	1" Head Pulley	PLB-07	14	1	#8-32 x 1/2" Lg. Pan Hd. Screw	N/A
6	1	1" Wiper Blade Set	PLB-09	15	4	#8-32 x 1/2" Lg. Pan Hd. Screw	N/A
7	1	Shaft Seal	PMM-42	16	4	#4 x 1/2" Flat Head Screw	N/A
8	1	Clear Discharge Hose	PMM-10	17	1	1/4-20 x 1/2" Lg. SS Screw	N/A
9	1	Removable Trough	PLB-05				