



**IDEAL INDUSTRIES  
NETWORKS**

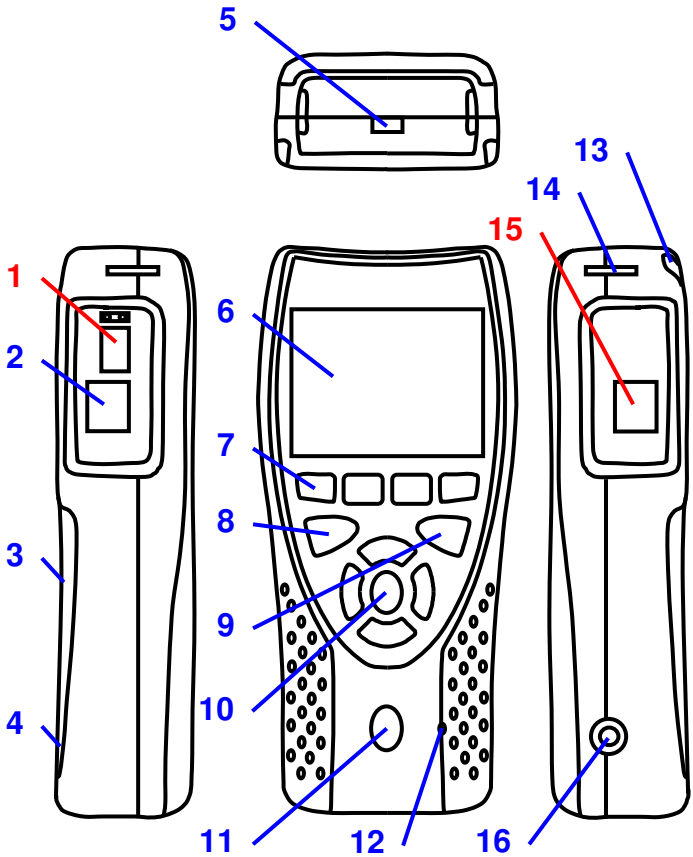


**LanXPLORER**

*Quick Reference Guide  
150809 issue 2*

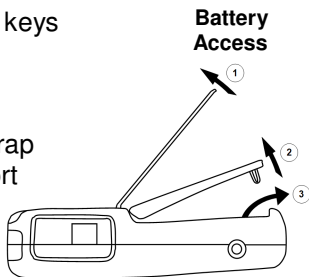
© IDEAL INDUSTRIES Ltd 2011  
+44 (0) 1925 444446  
UKSales@idealnwd.com

[www.lanexplorer.co.uk](http://www.lanexplorer.co.uk)



# - LanXPLOER PRO only

- 1 Slot for SFP module
- 2 Primary RJ45 port
- 3 Battery compartment (behind kickstand)
- 4 Reset button (inside battery compartment)
- 5 USB port
- 6 LCD colour screen
- 7 Function keys F1 to F4
- 8 Autotest button
- 9 Escape button
- 10 Cursor and ENTER keys
- 11 ON/OFF button
- 12 Charger LED\*
- 13 Stylus
- 14 Slots for hanging strap
- 15 Secondary RJ45 port
- 16 12volt DC-Jack

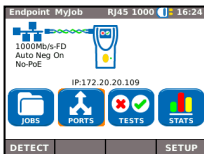


- AA Cells can not be charged internally !
- Use the RESET button to reset the tester !
- Do not remove the battery to reset !

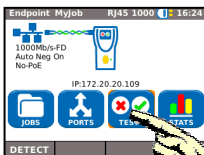
*Charger LED	Status
Green	Battery is charging
Off (with charger connected)	Battery is charged
Green Flashing	Battery is not being charged
Red Flashing	Battery can not be charged – temperature is too high

# Four Ways to Navigate

A

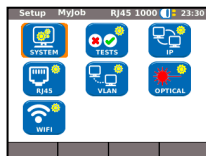
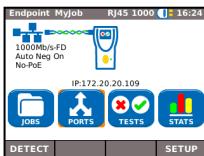


B

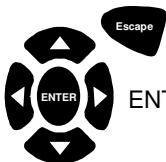


Touch Screen (PRO only)

C



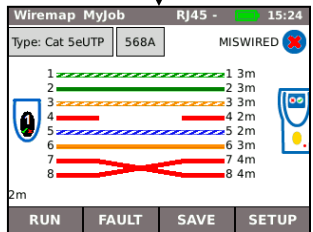
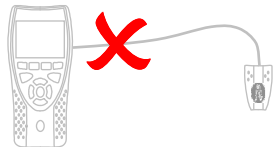
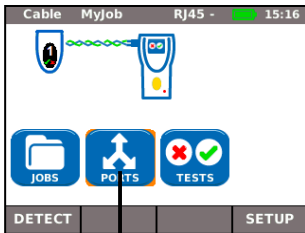
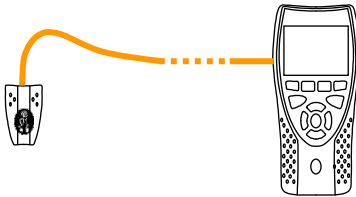
D



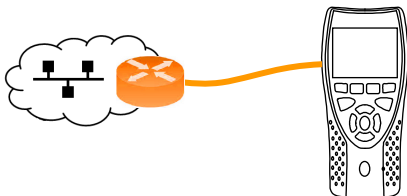
Escape – Return to previous screen

ENTER – Accept selection

# Cable Testing



# Network Testing over Copper



Endpoint Myjob RJ45 1000 16:24

1000Mb/s-FD  
Auto Neg On  
No-PoE

IP:172.20.20.109

JOBS PORTS TESTS STATS

DETECT SETUP



RJ45

TESTS

NET MAP

RUN

IP

IP Myjob RJ45 - 01:51

IP Address **Dynamic (DHCP)**

IP Address 192.168.82.77

NetMask 255.255.255.0

Gateway

DNS1

DNS2

APPLY

Netmap Myjob RJ45 1000 00:17

Addr: 172.20.20.35/24

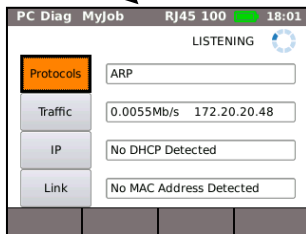
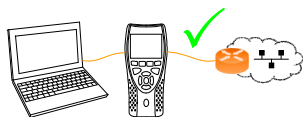
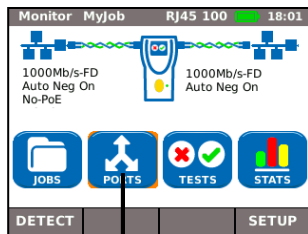
All Hosts 59

Server Hosts 3

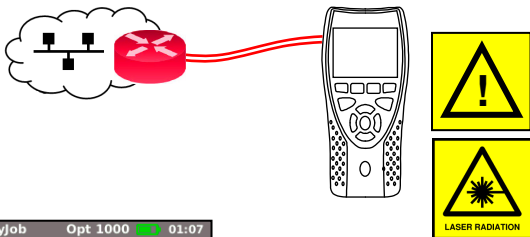
Printer Hosts 1

RUN SAVE MAP SAVE SETUP

## In-Line Testing over Copper (PRO only)



## Network Testing over Fibre (PRO only)



Optical MyJob Opt 1000 01:07

Opt 1000Mb/s

IP:192.168.82.77

JOBS PORTS TESTS STATS

DETECT SETUP



T-Route MyJob Opt 1000 00:54

Target 193.254.188.125

	Hop	T1 ms	T2 ms	T3 ms	
11	217.71.99.138	27.4	27.6	27.6	
12	81.92.174.2	27.9	27.8	27.7	
13	193.254.191.33	30.2	30.2	30.1	
14	193.254.191.11	29.9	30.0	30.0	
15	193.254.188.125	30.0	30.4	30.0	

Info PASSED

RUN SAVE SETUP

T-Route MyJob Opt - 01:22

Target

Max Hops

Timeout (s)

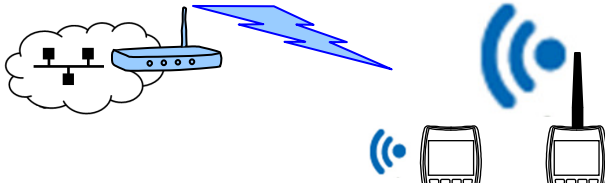
Type

APPLY





# Network Testing over WiFi (PRO and PLUS only)



WiFi MyJob WiFi 48 00:52

ieuwireless

IP:172.20.20.80

JOBS PORTS TESTS STATS

SCAN CONFIG



**RUN**

**RUN**

Scan MyJob WiFi - 00:19

One Or More Networks Found

	SSID	CH	🔒	
1	ABCDEFGHIJKLMN...	10	WPA...	
2	default	6	OFF	
3	ieuwireless	1	WEP	

RUN DETAILS SAVE JOIN



Ping MyJob WiFi 48 01:06

Target: 193.254.188.125

Info: PASSED

Tx Count: 3/3

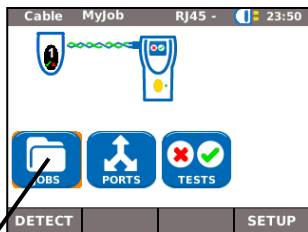
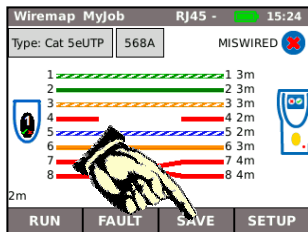
Rx Count: 3

Delay(ms)	Min	Avg	Max
	32.1	32.2	32.4

RUN SAVE SETUP



## Result Saving and Viewing



VIEW



TO USB

