

T-5312

Pneumatic Receiver-Controller

Description

The T-5312 Receiver-Controller directly controls dampers, valves, and other devices in a pneumatic transmission system. The T-5312 produces a proportional 3 to 15 psig (21 to 105 kPa) pressure signal from a remotely located transmitter.

Refer to *T-5312 Receiver-Controller for Pneumatic Transmission Systems Product Bulletin (LIT-7171300)* for important product information.

Features

- may be used either DA (Direct Acting) or RA (Reverse Acting), selected from a marked rail
- equipped with flexure levers to reduce hysteresis and friction
- output pressure indicated on an integral gauge
- gauge and set point dial are visible through the cover
- designed for surface mounting
- adjustable gain (proportional) or differential (two-position) by repositioning sliding leakport

Selection Charts

T-5312 Receiver-Controller

Code Number	Description
T-5312-1	T-5312 Proportional
T-5312-3	T-5312 Two-Position

Repair Information

If the T-5312 Receiver-Controller fails to operate within its specifications, replace the unit. For a replacement controller, contact the nearest Johnson Controls® representative.

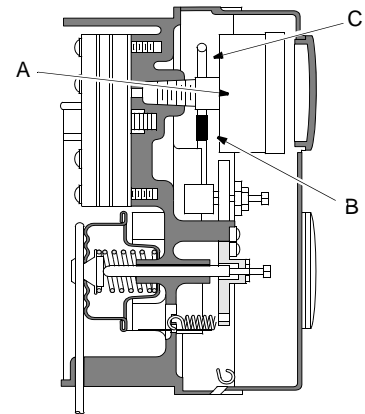
Accessories and Maintenance Parts for T-5312

Code Number	Callout	Description
T-8000-16	---	External Pilot Orifice Kit
Dials		
T-5312-102	---	50 to 100°F and 10 to 35°C
T-5312-103	---	10 to 60% RH and 30 to 80% RH
T-5312-104	---	50 to 150°F and 10 to 60°C
T-5312-105	---	60 to 85°F and 40 to 65°F
T-5312-106	---	40 to 240°F and 0 to 100°C
T-5312-107	---	-40 to 160°F and -40 to 60°C
G-2010-5	A	Output Gauge ¹ , 0 to 30 psig (0 to 210 kPa), 1-1/2 in.
Orifice and Filter Replacement Kit with Orifice, 1/8 in. O.D. Poly tubing and Filter (Order in Multiples of Five)		
T-8000-618	B	0.005 in. Red Orifice
T-8000-619	B	0.007 in. Aqua Orifice
F-1000-355	C	Poly tubing, 1/8 in. O.D. (Order in Multiples of 50 ft)

1. The gauge on instruments manufactured before 1985 cannot be replaced.



**T-5312 Series
 Pneumatic Receiver Controller**



Maintenance Parts for T-5312