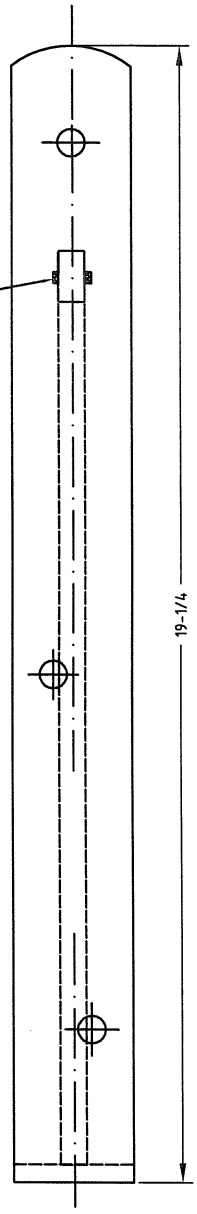


DO NOT SCALE DRAWING

0049-20

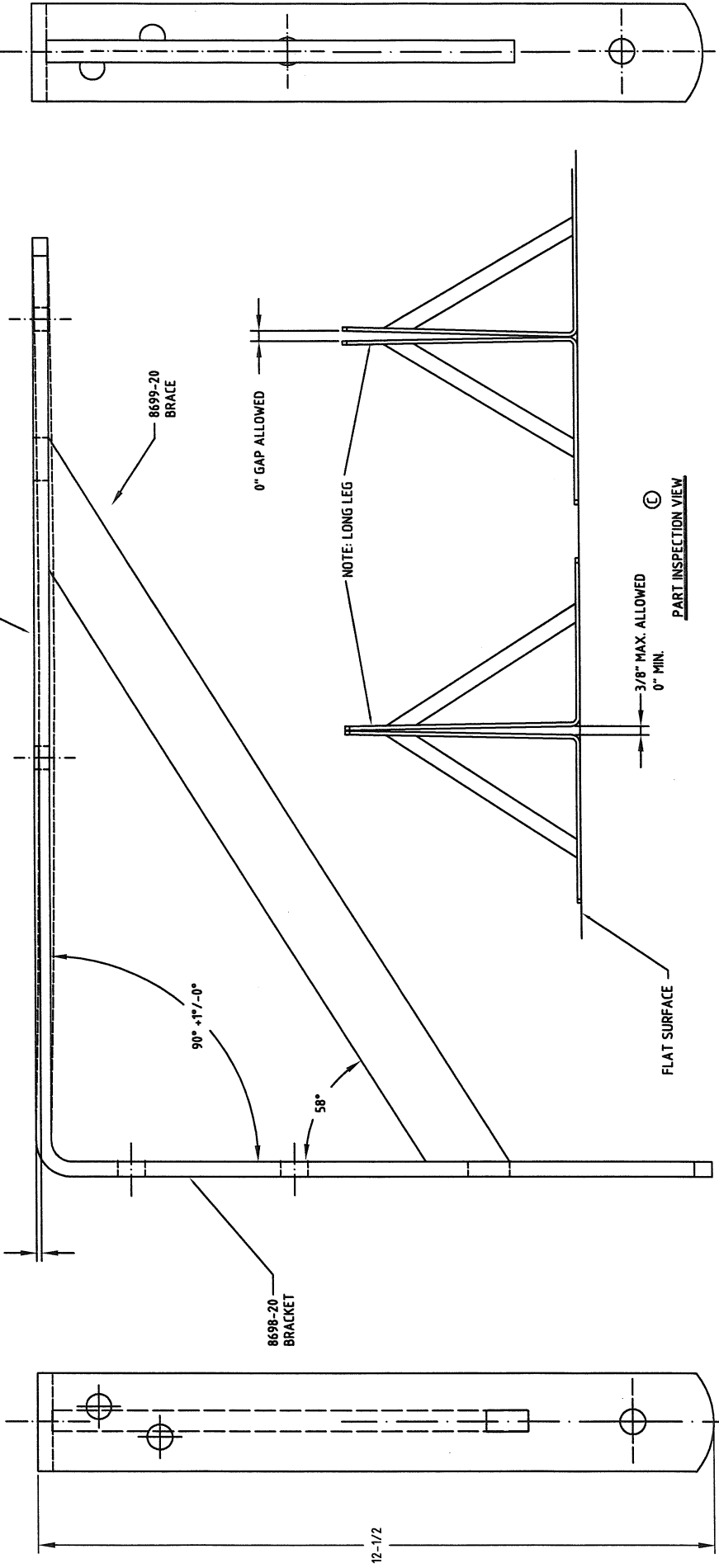
WELD SECURELY SO PART CANNOT BE PULLED APART BY HAND.



19-1/4

NOTE: BOW NOT TO EXCEED 1/8" MAX. ON BOTH LEGS & IN OR OUT.

1/8 MAX. BOW



8699-20
BRAKE

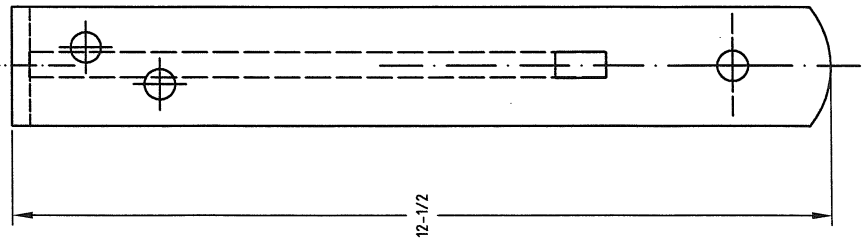
0" GAP ALLOWED

NOTE: LONG LEG

3/8" MAX. ALLOWED
0" MIN.

FLAT SURFACE

PART INSPECTION VIEW



12-1/2

TOLERANCES UNLESS SPECIFIED: DECIMALS +/- .005 FRACTIONS +/- .164 ANGLES +/- .1/

MATERIAL:	WELDMENT
NAME:	0049-20 BRACKET ASSEMBLY
DR. BY:	R. GUSTAFSON
DATE:	3-28-56
SCALE:	FULL
REV.:	C-0049-20

REV.	CHANGE	DATE	EN
------	--------	------	----

JOHN STERLING CORPORATION
BOSTON, MASS. 02111 U.S.A.