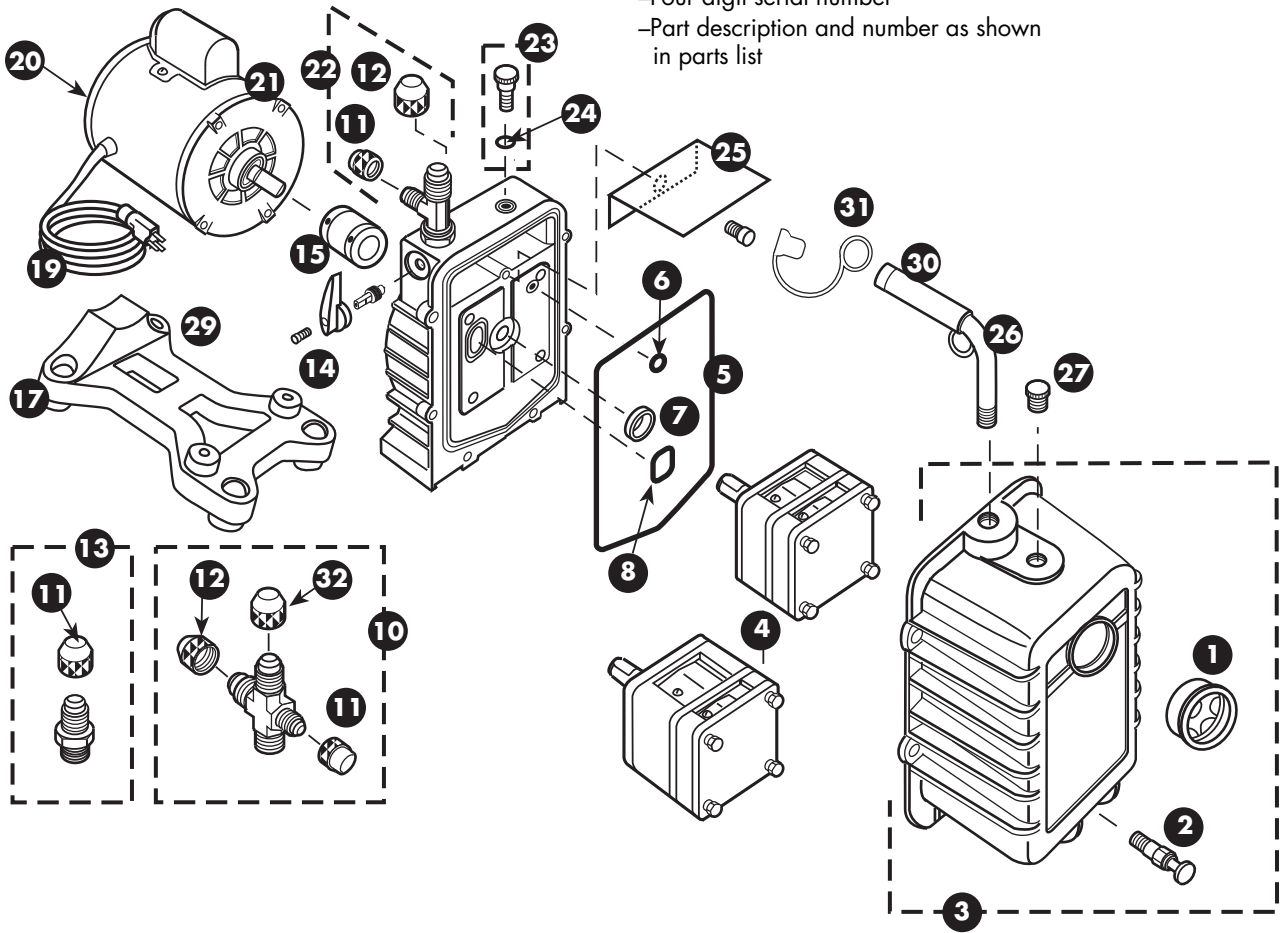


# REPAIR PARTS

Please provide following information:

- Model number
- Four digit serial number
- Part description and number as shown in parts list



Ref. No.	Part No.	Description
1	PR-1 ♦	Sight Glass
2	PR-2 ♦	Drain Valve
3	PR-300	DV-42N through DV-200N Cover Assy. w/Sight Glass and Drain Valve & Handle and red plug
	PR-301	DV-285N Cover Assy. w/Sight Glass and Drain Valve & Handle and red plug
4	PR-305	DV-42N Cartridge w/O-Rings and Cover Seal
	PR-302	DV-85N Cartridge w/O-Rings and Cover Seal
	PR-303	DV-142N Cartridge w/O-Rings and Cover Seal
	PR-304	DV-200N Cartridge w/O-Rings and Cover Seal
	PR-314	DV-285N Cartridge w/O-Rings and Cover Seal
5	PR-311	Cover Seal
6	PR-211	Trap O-Ring, Gas Ballast
7	PR-3	Shaft Seal
8	PR-315	Trap O-Ring, Intake
10	PR-76 ♦	Intake Cross with Caps
11	NFT5-4	1/4" O-Ring Cap
12	NFT5-6	3/8" O-Ring Cap
13	PR-32 ♦	1/4" Intake with Cap
14	PR-209	Plastic Isolation Valve Handle & Screw includes stem w/O-rings & Retainer

Ref. No.	Part No.	Description
15	PR-208 ♦	Flexible Coupler (3 Parts)
	PR-308	Flexible Section Only
17	PR-62	Rubber Foot For Base
19	PR-31	6' Line Cord, 115V Emerson Motor
	PR-58	6' Line Cord 115V Marathon Motor
20	PR-54	Rocker Switch, 115V Emerson Motor (Wire Leads)
	PR-35	Rocker Switch, 115V Marathon Motor (Prongs)
21	PR-206	1/2 HP, 115V, 60HZ Motor w/Line Cord and Switch
	PR-207	1/2 HP, 115V/230V, 50/60HZ Motor w/Line Cord and Switch
22	PR-5 ♦	Intake Tee with Caps
23	PR-7	Gas Ballast Valve w/O-Ring
24	P9000	O-Ring, Gas Ballast Valve
25	PR-40	Splash Guard and Screw
26	PR-75 ♦	1/2" Cushioned Handle w/Lift Loop & DV-EP 8 101
27	PR-22	Oil Fill Plug w/O-Ring
29	PR-62	Base With Feet
30	PR-501	Cushion Grip With Cap
31	DVEP 8 101	Red Plug For Handle
32	NFT5-8	1/2 Cap w/O-ring

\* Not Shown  
PR-18 Cartridge Valve Repair Kit (Not Shown)

♦ Coat With Thread Sealant When Replacing