

**ACCELERATING INNOVATION**

**ISOCOVERS**



# Pipe and Valve Insulation

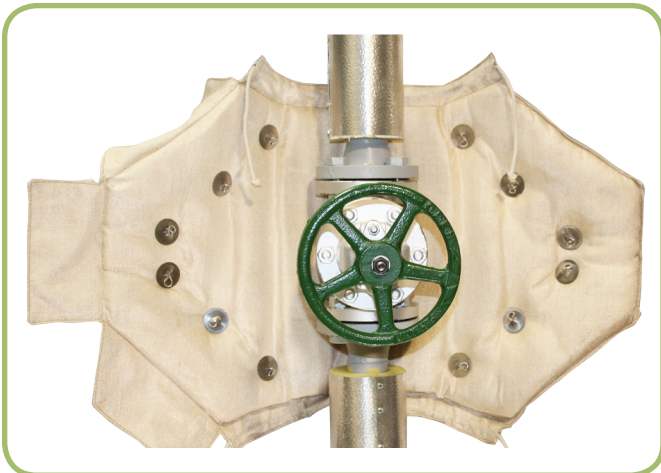
Removable insulation covers for valves and flanges are an effective, convenient, and low cost solution to reduce heat loss and lower energy bills. The pipe and components insulation line is designed to fit an array of fittings and sizes, and can be used on almost any application that requires thermal processing. Below, you will find a small list of common applications used in a variety of industrial operations, but is not limited to these items only:

## Applications

- Valves
- Pipes
- Sight Glasses
- Flanges Strainers
- Filters and Regulators
- Fittings
- Pumps
- Manifolds
- Pressure Reducing Valves
- DeSuper Heaters

Designing removable insulation blankets for engine and exhaust components and process piping can sometimes be a challenge. While straight piping and simple geometries are straightforward, many components have either complex geometrical shapes, or a number of protrusions and supports, which need to be accounted for.

Fortunately, UniTherm has developed the ISOCOVERS Insulation Line for insulating straight sections of pipe, as well as complex surfaces such as valve bodies and other multifaceted configurations.



*Wrap ISOCOVER around pipe component. Tie drawstrings firmly. Use stainless steel wire to securely close ISOCOVER.*

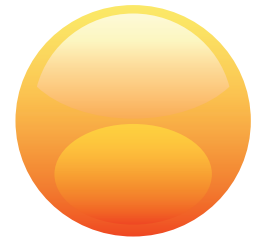
# About

UniTherm International, located in Lewisville, Texas, is a manufacturer of insulation blankets for all applications.

UniTherm designs, develops, and manufactures insulation blankets for all applications, specializing in the plastics and oil and gas industries. Our goal is to create unrivaled insulation systems that offer an array of benefits: energy efficiency, personnel protection, ease of use, and durability.

We are continuously working to create new insulation products, which benefit the environment through increased energy efficiency and protect personnel from hot applications. Our dedication in providing premium insulation systems, has led to the creation of several unique, patented products to serve various industries around the world.

UniTherm's number one objective is to serve our customers. We continuously improve our standard of excellence through product improvement and customer devotion. Here at UniTherm, we are proud of our high standards for quality, simplicity, cost, and delivery.



# Contact

## UniTherm Insulation Systems

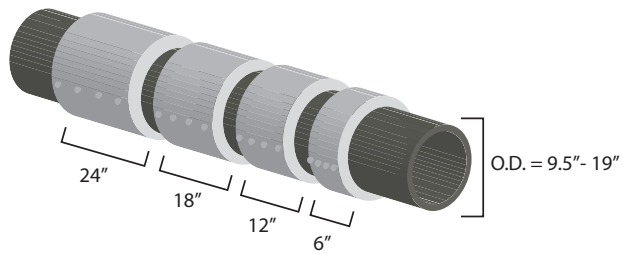
711 Jones St. Lewisville, Texas 75057

| [info@unitherm.com](mailto:info@unitherm.com)

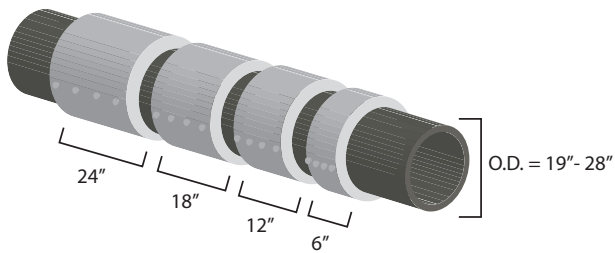
**Toll Free:** 800-657-9542

**Company Website:** [www.unitherm.com](http://www.unitherm.com)

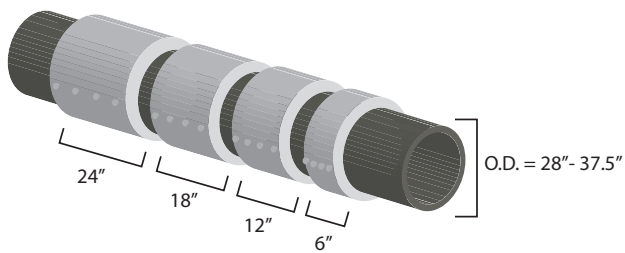
\* Mix and match different widths to fit your specifications



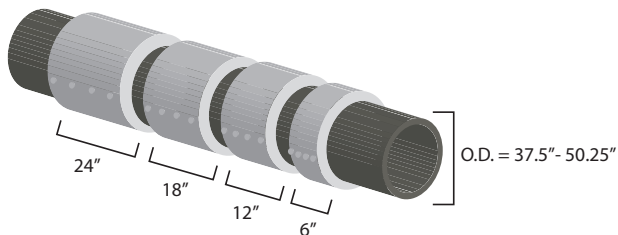
Part Number	Width	Weight	Thickness	Temp. Rating
IC2406	6"	1 lbs.	3"	0°F - 800°F
IC2412	12"	3 lbs.	3"	0°F - 800°F
IC2418	18"	4 lbs.	3"	0°F - 800°F
IC2424	24"	4.5 lbs.	3"	0°F - 800°F



Part Number	Width	Weight	Thickness	Temp. Rating
IC3606	6"	1.5 lbs.	3"	0°F - 800°F
IC3612	12"	3 lbs.	3"	0°F - 800°F
IC3618	18"	4.5 lbs.	3"	0°F - 800°F
IC3624	24"	6 lbs.	3"	0°F - 800°F



Part Number	Width	Weight	Thickness	Temp. Rating
IC4806	6"	2 lbs.	3"	0°F - 800°F
IC4812	12"	4 lbs.	3"	0°F - 800°F
IC4818	18"	4.5 lbs.	3"	0°F - 800°F
IC4824	24"	8 lbs.	3"	0°F - 800°F



Part Number	Width	Weight	Thickness	Temp. Rating
IC6006	6"	2.5 lbs.	3"	0°F - 800°F
IC6012	12"	5 lbs.	3"	0°F - 800°F
IC6018	18"	7.5 lbs.	3"	0°F - 800°F
IC6024	24"	10 lbs.	3"	0°F - 800°F

ISOCOVERS ISO Wraps are suitable for straight sections of pipe, which do not involve complex shapes, such as flanges, couplings and the like.

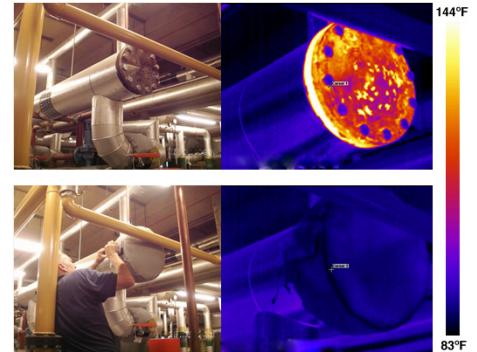
## Features

- Adjustable draw cord to ensure a tight fit.
- Maintains physical integrity up to 800°F
- Flexible one-piece design
- High temperature flap allows seam to overlap
- Bright yellow, visible "Hot Surface" patch
- Lacing anchors to adjust circumference



# Insulation Solutions for Pipe and Valve Components

Piping in most buildings is generally well insulated. However in some sites there are pipe runs, mechanical fittings and valve bodies that are bare. When left bare, though, uninsulated valves and fittings can lose huge amounts of heat that can add significant costs to the energy bill and create unnecessary health and safety issues. This can be avoided by simply installing insulation on the uninsulated or under-insulated valves and fittings.



UniTherm's removable insulation jackets are an effective and convenient way to prevent heat loss, and protect equipment and personnel. UniTherm insulation jackets are designed with draw cords and lacing hook and wire. This makes them easy to install, remove, and reinstall.

## Less Heat Emissions Means Safer Environment

UniTherm insulation jackets not only meet OSHA's 120°F Surface Temperature requirement, but exceeds it by 25%.

Operation Temperature	Ambient Air Temperature	Blanket Surface Temperature
180°F	72°F	79°F
350°F	76°F	93°F

OSHA Requires 120°F Surface Temperature

## Other Related Products



C Rings, 3/4in, 304 Stainless Steel, PK1000: Ideal for industrial applications where fastening or tie-downs are desired.

**Part # CR**



C Ring Pliers, 8 In, Nickel Plated: Designed to install the most commonly used types of C Rings with ease.

**Part # CRP**



304 Stainless steel lacing hook is used for fabrication of lacing insulation blankets or removable insulation covers with anchor assisting in fabrication.

**Part # LHW**



304 stainless steel .051" safety wire is used as a method of reinforcing fasteners and other parts for stability during use.

**Part # SSLW304**

Product	Diameter	Circumference	Long	Width	Part Number
Iso Wrap	3" - 6" (76mm - 152mm)	10" - 19" (241mm - 483mm)	24" (610mm)	6" (152mm)	IC2406
Iso Wrap	3" - 6" (76mm - 152mm)	10" - 19" (241mm - 483mm)	24" (610mm)	12" (305mm)	IC2412
Iso Wrap	3" - 6" (76mm - 152mm)	10" - 19" (241mm - 483mm)	24" (610mm)	18" (457mm)	IC2418
Iso Wrap	3" - 6" (76mm - 152mm)	10" - 19" (241mm - 483mm)	24" (610mm)	24" (610mm)	IC2424
Iso Wrap	6" - 9" (152mm - 229mm)	19" - 28" (483mm - 711mm)	36" (914mm)	6" (152mm)	IC3606
Iso Wrap	6" - 9" (152mm - 229mm)	19" - 28" (483mm - 711mm)	36" (914mm)	12" (305mm)	IC3612
Iso Wrap	6" - 9" (152mm - 229mm)	19" - 28" (483mm - 711mm)	36" (914mm)	18" (457mm)	IC3618
Iso Wrap	6" - 9" (152mm - 229mm)	19" - 28" (483mm - 711mm)	36" (914mm)	24" (610mm)	IC3624
Iso Wrap	9" - 12" (229mm - 305mm)	28" - 37" (711mm - 953mm)	48" (1219mm)	6" (152mm)	IC4806
Iso Wrap	9" - 12" (229mm - 305mm)	28" - 37" (711mm - 953mm)	48" (1219mm)	12" (305mm)	IC4812
Iso Wrap	9" - 12" (229mm - 305mm)	28" - 37" (711mm - 953mm)	48" (1219mm)	18" (457mm)	IC4818
Iso Wrap	9" - 12" (229mm - 305mm)	28" - 37" (711mm - 953mm)	48" (1219mm)	24" (610mm)	IC4824
Iso Wrap	12" - 16" (305mm - 406mm)	37" - 50" (953mm - 1276mm)	60" (1524mm)	6" (152mm)	IC6006
Iso Wrap	12" - 16" (305mm - 406mm)	37" - 50" (953mm - 1276mm)	60" (1524mm)	12" (305mm)	IC6012
Iso Wrap	12" - 16" (305mm - 406mm)	37" - 50" (953mm - 1276mm)	60" (1524mm)	18" (457mm)	IC6018
Iso Wrap	12" - 16" (305mm - 406mm)	37" - 50" (953mm - 1276mm)	60" (1524mm)	24" (610mm)	IC6024
<b>Product</b>					<b>Part Number</b>
C Ring Pliers					CRP
<b>Product</b>					<b>Part Number</b>
C Ring 3/4					CR
<b>Product</b>					<b>Part Number</b>
Stainless Steel Lacing Wire					SSLW304
<b>Product</b>					<b>Part Number</b>
Lacing Anchor & Washer Set					LHW

**ISOCOVERS has a 14 day exchange policy. Refunds are not permitted.  
ISOCOVERS comes with a 1-year manufacturer warranty  
with the ability to purchase an extended warranty.**

**UNITHERM**  
insulation systems

Toll Free: 800.657.9542

Phone: 972.436.1401

Fax: 972.436.0112

[info@unitherm.com](mailto:info@unitherm.com)

711 Jones St.

Lewisville, Texas 75057

ICREV#01