



Nothing but **HEAVY DUTY.**[®]

NEW!

MILWAUKEE[®] HAND TOOLS



**ULTIMATE PRODUCTIVITY.
SUPERIOR PERFORMANCE.**

6in1 COMBINATION PLIERS

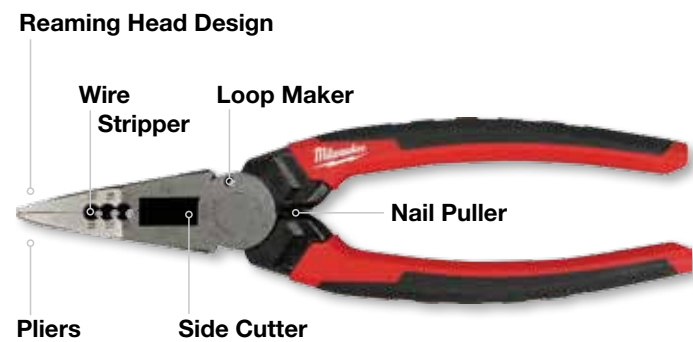
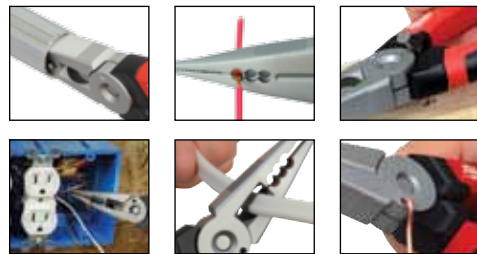


REPLACES



General Information			Tool Specifications				Application Specifications			
Grainger Part #	Milwaukee Part #	Description	Length	Jaw Length	Jaw Capacity	Knife Length	Wire Stripper		Bolt Cutter	Pipe Reamer
						Solid	Stranded			
13L332	48-22-3069	6in1 Combination Pliers	7-1/2"	2-1/4"	1-1/2"	1/2"	10-18awg	12-20awg	#6 and #8	Up to 1-1/2"

6in1 LONG NOSE PLIERS



REPLACES



General Information			Tool Specifications				Application Specifications		
Grainger Part #	Milwaukee Part #	Description	Length	Jaw Length	Jaw Capacity	Knife Length	Wire Stripper		Pipe Reamer
						Solid	Stranded		
13L331	48-22-3068	6in1 Long Nose Pliers	8"	2-1/4"	1-3/4"	11/16"	10-14awg	12-16awg	Up to 1-1/2"

6in1 LINEMAN'S PLIERS



REPLACES



General Information			Tool Specifications				Application Specifications	
Grainger Part #	Milwaukee Part #	Description	Length	Jaw Length	Jaw Capacity	Knife Length	Bolt Cutter	Pipe Reamer
13L342	48-22-3309	6in1 Lineman's Pliers	9"	1-5/8"	1"	13/16"	#6 and #8	Up to 1-1/2"

6in1 DIAGONAL CUTTING PLIERS



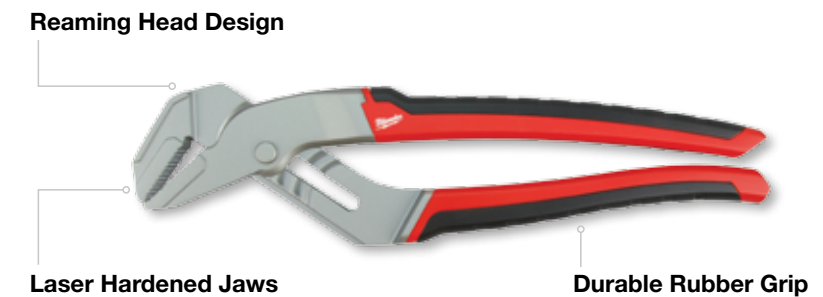
REPLACES



General Information			Tool Specifications			Application Specifications
Grainger Part #	Milwaukee Part #	Description	Length	Jaw Length	Jaw Capacity	Pipe Reamer
13L333	48-22-4106	6in1 Diagonal Pliers (6")	6"	7/8"	1-1/4"	Up to 1-1/2"
13L334	48-22-4107	6in1 Diagonal Pliers (7")	7"	1"	1-3/8"	Up to 1-1/2"
13L335	48-22-4108	6in1 Diagonal Pliers (8")	8"	1-1/8"	1-5/8"	Up to 1-1/2"

TONGUE & GROOVE PLIERS

UP TO 40% LONGER LIFE



General Information			Tool Specifications				Application Specifications
Grainger Part #	Milwaukee Part #	Description	Overall Length	Jaw Capacity	Jaw Length	Adjustment Positions	Pipe Reamer
13L329	48-22-3210	Tongue and Groove Pliers (10")	10"	2"	1-3/8"	7	Up to 2"
13L330	48-22-3212	Tongue and Groove Pliers (12")	12"	2-1/4"	1-1/2"	7	Up to 2-1/4"

QUICK ADJUST REAMING PLIERS



General Information			Tool Specifications				Application Specifications
Grainger Part #	Milwaukee Part #	Description	Overall Length	Jaw Capacity	Jaw Length	Adjustment Positions	Pipe Reamer
13L326	48-22-3108	Quick Adjust Reaming Pliers (8")	8"	1-1/2"	1-1/4"	16	Up to 1-1/2"
13L327	48-22-3110	Quick Adjust Reaming Pliers (10")	10"	2"	1-1/2"	22	Up to 2"
13L328	48-22-3112	Quick Adjust Reaming Pliers (12")	12"	2-3/4"	1-3/4"	26	Up to 2-3/4"

FASTBACK™ FLIP POCKET KNIFE

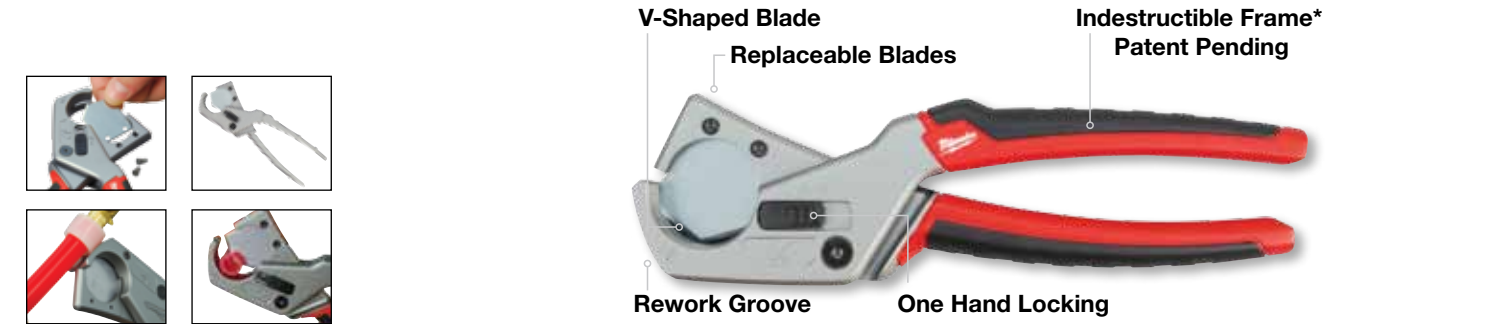


General Information			Tool Specifications	Application Specifications
Grainger Part #	Milwaukee Part #	Description	Blades	Wire Stripper
6CMY2	48-22-1901	FASTBACK™ Flip Pocket Knife	5	Up to 10ga
6CMY1	48-22-1910	Side Sliding Utility Knife	5	Up to 10ga

SIDE SLIDING UTILITY KNIFE



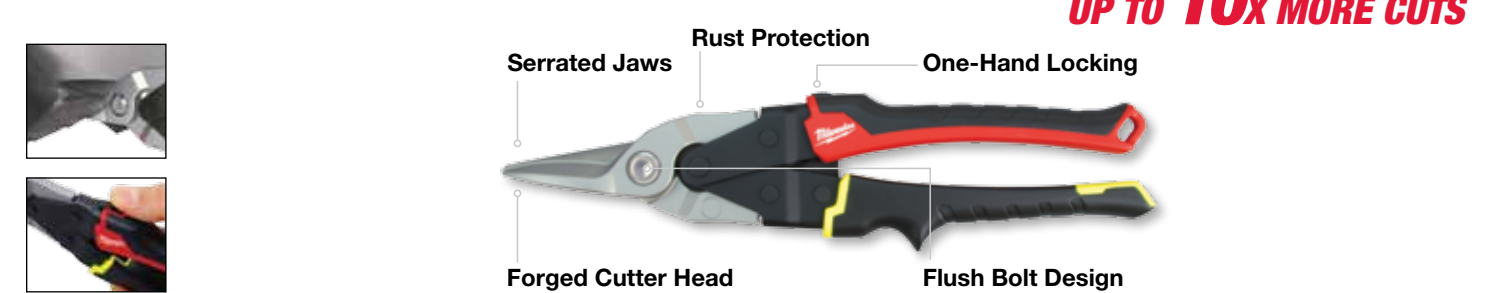
ProPEX®/TUBING CUTTER



General Information			Application Specifications	General Information			Tool Specifications
Grainger Part #	Milwaukee Part #	Description	Jaw Capacity	Grainger Part #	Milwaukee Part #	Description	Blades
13L342	48-22-4200	ProPEX® / Tubing Cutter	1"	-	48-22-4201	ProPEX® / Tubing Cutter Blade	1

*Frame designed to survive extreme job site conditions

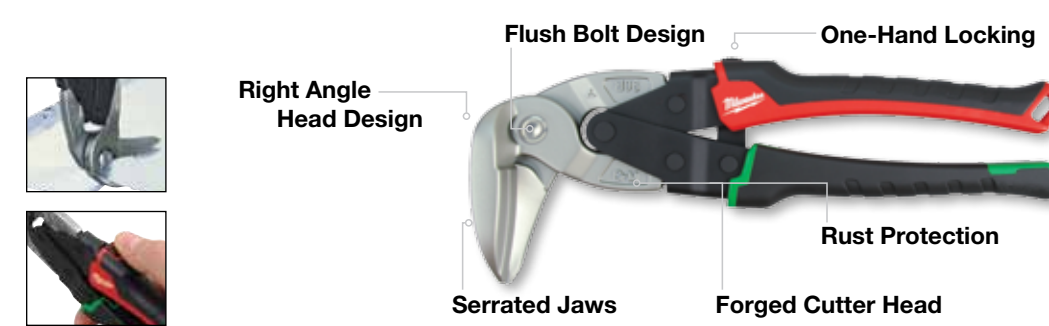
AVIATION AND BULLDOG SNIPS



General Information			Tool Specifications			Application Specifications	
Grainger Part #	Milwaukee Part #	Description	Length	Cutter Head	Thumb Lock	Cold Rolled Steel	Stainless Steel
13L338	48-22-4030	Straight Cutting Aviation Snips	10"	Forged	YES	18ga	22ga
13L337	48-22-4010	Left Cutting Aviation Snips	10"	Forged	YES	18ga	22ga
13L336	48-22-4020	Right Cutting Aviation Snips	10"	Forged	YES	18ga	22ga
13L341	48-22-4000	Bulldog Snips	9-3/4"	Forged	YES	16ga	18ga

UP TO 10X MORE CUTS

RIGHT ANGLE SNIPS

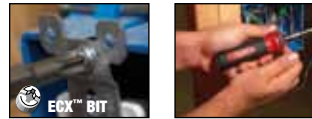


General Information			Tool Specifications			Application Specifications	
Grainger Part #	Milwaukee Part #	Description	Length	Cutter Head	Thumb Lock	Cold Rolled Steel	Stainless Steel
13L340	48-22-4011	Left Cutting Right Angle Snips	9-1/2"	Forged	YES	24ga	28ga
13L339	48-22-4021	Right Cutting Right Angle Snips	9-1/2"	Forged	YES	24ga	28ga

UP TO 10X MORE CUTS

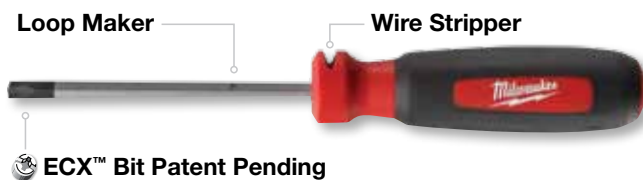
11in1 SCREWDRIVER

- P#1, P#2
- SL 3/16", SL 1/4"
- NUT DRIVERS: 1/4", 5/16", 3/8"
- ECX™ #1, ECX™ #2



General Information			Tool Specifications		Application Specifications			
Grainger Part #	Milwaukee Part #	Description	Overall Length	Shaft Length	Nut Drivers	Bit Types	Loop Maker	Wire Stripper
6CMY3	48-22-2113	11in1 Screwdriver	7-1/2"	3-1/2"	1/4", 5/16", 3/8"	SL 3/16", SL 1/4"; P#1, P#2; ECX™ #1, ECX™ #2	Up to 12ga	Up to 12ga
13G265	48-22-2110	4 Pc. Replacement Bit Set	N/A	N/A		SL 3/16", SL 1/4"; P#1, P#2; ECX™ #1, ECX™ #2; SQ#1, SQ#2		

8 PC. SCREWDRIVER SET



General Information			Tool Specifications			Application Specifications			
Grainger Part #	Milwaukee Part #	Description	Bit Type	Shaft Length	Shaft Type	Steel Cap	Wire Stripper	Loop Maker	
6PFF7	48-22-2008	8 Pc. Screwdriver Set	ECX™ #1	4"	●			Up to 12ga	Up to 12ga
			ECX™ #2	4"	●			Up to 12ga	Up to 12ga
			P#1	3"	●			Up to 12ga	Up to 12ga
			P#2	4"	●			Up to 12ga	Up to 12ga
			SL 1/4"	4"	●	YES			
			SL 5/16"	6"	●	YES			
			Cabinet 3/16"	3"	●				
			Cabinet 3/16"	6"	●				

18" PVC/ABS SAW

UP TO 10X FASTER BLADE CHANGE



General Information			Tool Specifications		Application Specifications	
Grainger Part #	Milwaukee Part #	Description	Blades		Recommended Applications	
6PFF8	48-22-0223	PVC/ABS Saw	(1) 18"		PVC/ABS, plywood, wallboard, laminates	
-	48-22-0220	PVC/ABS Saw Blade	(1) 18"		PVC/ABS, plywood, wallboard, laminates	

COMPACT HACK SAW



General Information			Tool Specifications		Application Specifications	
Grainger Part #	Milwaukee Part #	Description	Blades		Recommended Applications	
6PFF9	48-22-0012	Compact Hack Saw	(1) 10"		Copper tubing, metal and PVC	

RASPING JAB SAW



General Information			Tool Specifications		Application Specifications	
Grainger Part #	Milwaukee Part #	Description	Blades		Recommended Applications	
6CMY0	48-22-0304	Rasping Jab Saw	(1) 6" Fixed Blade		Drywall/Plaster	
6PFF6	48-22-0305	Folding Jab Saw	(1) Wood (1) Metal (1) Gen. Purpose		Wood, Metal, and General Purpose	

FOLDING JAB SAW



QUIK-LOK® JOB SAW



General Information			Application Specifications		General Information			Application Specifications	
Grainger Part #	Milwaukee Part #	Description	Recommended Applications		Grainger Part #	Milwaukee Part #	Description	Recommended Applications	
1ED57	48-08-0401	QUIK-LOK® Job Saw			2NJ61	48-08-0415	Carbide Grout Blade*	Removes grout between tiles	
2NV82	48-08-0405	11 Pc. Utility Kit	Includes 1 each of 10 blades plus job saw handle in carrying case		2NJ63	48-08-0416	Putty Knife*	Cleans windows, joints, and seams. Spreads putty, glue, and adhesives	
-	48-08-0510	Sheath	For storing job saw on users belt		2NJ70	48-08-0423	Utility Blade*	Cuts ceiling tile, soft wood	
2NJ71	48-08-0424	Hunting Knife*	General hunting and campsite cutting		2NJ68	48-08-0420	Wavy Knife	Cuts cardboard, foam, insulation, soft rubber, vinyl	
2NJ66	48-08-0418	Linoleum Knife*	Cuts linoleum, ceiling tile, carpet, and vinyl		2NJ67	48-08-0419	Straight Knife	Cuts cardboard, foam, insulation, soft rubber, vinyl	
2NJ72	48-08-0425	Grout Rake*	Removes grout between tiles		2NJ65	48-08-0417	Paint Scraper*	Removes loose paint and adhesives	
					2NJ69	48-08-0422	Roofer's Blade*	Cuts shingles and tar paper	

*NOT FOR USE WITH RECIPROCATING SAW



MILWAUKEE ELECTRIC TOOL
13135 West Lisbon Road
Brookfield, WI 53005

www.milwaukeetool.com



AVAILABLE THROUGH

