



○ **AP600-220-3LC** Squeeze Valve with Locking Clip (Old Style). 3/8" NPT Female Outlet.

Note: Prior to 2002, Guardian manufactured the AP600-220-3 squeeze valve. This valve had an integral (non-removable) valve seat. In 2002, Guardian replaced this valve with the AP600-240 valve with a replaceable stainless steel valve seat. All eyewash/drench hose units and drench hose units manufactured after 2002 utilize the AP600-240 squeeze valve.

RK600-220
Repair Kit for Squeeze Valve (Old Style)

ITEM	PART NO.	DESCRIPTION	ITEM	PART NO.	DESCRIPTION
1	600-228R	Valve Plunger O-Ring (pkg of 6)	5	600-242R	Valve Disc Holder (pkg of 6)
2	600-221R	Valve Plunger (pkg of 6)	6	600-223A-R	Spring (pkg of 6)
3	550-064R	Valve Disc Screw (pkg of 6)	7	600-224R	Bonnet O-Ring (pkg of 6)
4	BNV040R	Valve Disc (pkg of 6)	8	600-225R	Valve Bonnet (pkg of 6)

○ **AP600-240LC** Squeeze Valve with Locking Clip (New Style). 3/8" NPT Female Outlet.

Note: Prior to 2002, Guardian manufactured the AP600-220-3 squeeze valve. This valve had an integral (non-removable) valve seat. In 2002, Guardian replaced this valve with the AP600-240 valve with a replaceable stainless steel valve seat. All eyewash/drench hose units and drench hose units manufactured after 2002 utilize the AP600-240 squeeze valve.

RK600-240
Repair Kit for Squeeze Valve (New Style)

ITEM	PART NO.	DESCRIPTION
1	AP600-249R	Valve Seat and O-Ring Assy. (pkg of 6)
2	AP600-241R	Valve Plunger Assy. (pkg of 6)
3	600-243A-R	Spring (pkg of 6)
4	600-244R	Bonnet O-Ring (pkg of 6)
5	600-245R	Valve Bonnet (pkg of 6)



AP350-100-096

8 ft. reinforced PVC hose for eyewash/drench hose and drench hose units.
3/8" NPT male swivel inlet,
3/8" NPT male outlet.



350-007

Molded nylon handle for eyewash/drench hose and drench hose units.



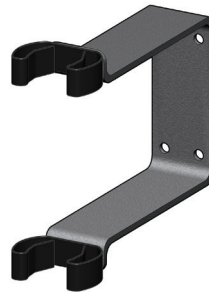
AP350-011G

Molded nylon deck flange for eyewash/drench hose and drench hose units. 1" IPS mounting shank.



AP150-003A

45 degree panel flange for eyewash/drench hose and drench hose units.
3/4" IPS mounting shank.



AP150-051C

Wall Bracket for Eyewash/Drench Hose Units



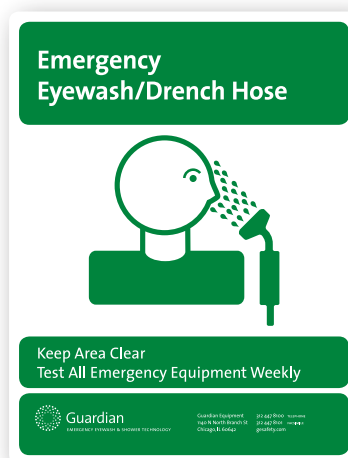
150-062A

Wall Hook for Drench Hose Units



AP150-084

Wall Bracket for Eyewash/Drench Hose Units



Emergency Eyewash/Drench Hose



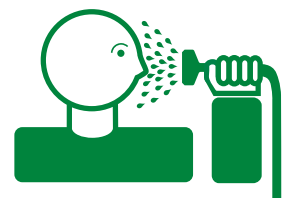
Keep Area Clear
Test All Emergency Equipment Weekly



250-010G
8-1/2" x 11" plastic sign



Emergency Drench Hose



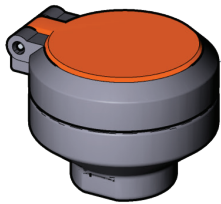
Keep Area Clear
Test All Emergency Equipment Weekly



250-006G
8-1/2" x 11" plastic sign



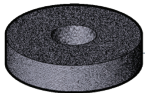
○ GS-Plus™ Spray Head



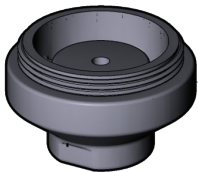
AP470-001
GS-Plus™ Spray Head.
1-1/2" Diameter.
1/4" NPT female inlet.



AP470-002ORG-R
1 1/2" Diameter Spray
Cover with "Flip Top"
Dust Cover (pkg of 2)



470-004R
1-1/8" Diameter Foam
Filter (pkg of 6)

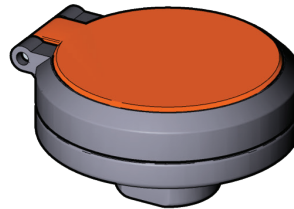


470-001R
GS-Plus Spray Head
Body (pkg of 6)

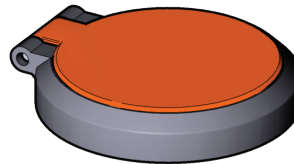


470-005R
1.6 Gallon Per Minute
Flow Control
(pkg of 6)

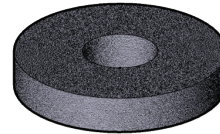
○ FS-Plus™ Spray Head



AP470-021
FS-Plus™ Spray Head.
2-1/8" Diameter.
1/4" NPT female inlet.



AP470-022RG-R
2 1/8" Diameter Spray
Cover with "Flip Top"
Dust Cover (pkg of 2)



470-024R
1-3/4" Diameter Foam
Filter (pkg of 6)



470-021R
FS-Plus Spray Head
Body (pkg of 6)



470-025R
3.2 Gallon Per Minute
Flow Control (pkg of 6)