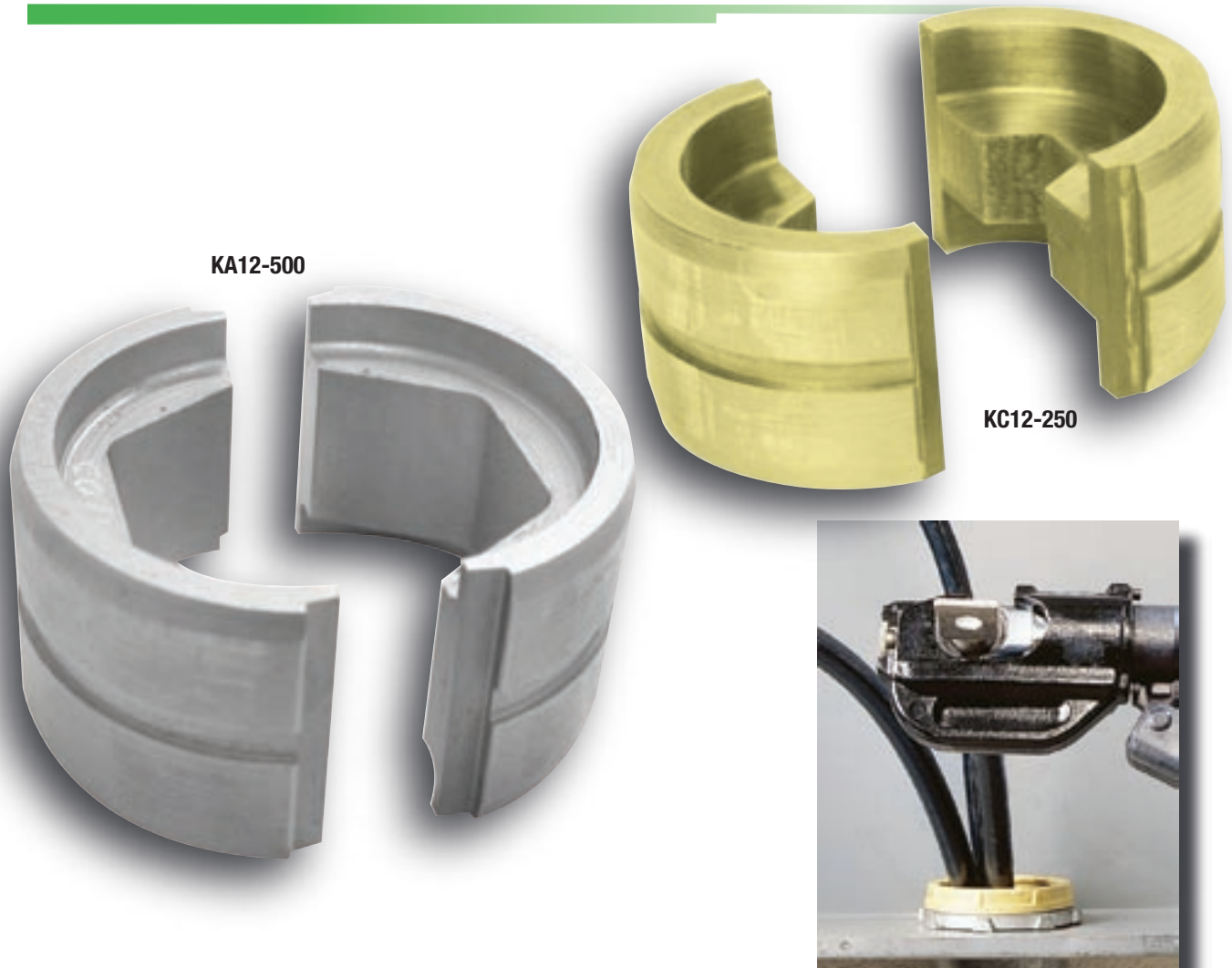


## KC12 and KA12 12-Ton Crimping Dies



### 12-Ton UL and cUL classified crimping dies for copper and aluminum connectors

Introducing the KC12 and KA12 Series of crimping dies... Greenlee® is pleased to introduce new crimping dies for use on copper and aluminum color-coded lugs and splices. These new dies produce a hexagonal crimp that is the style preferred by many customers. They may be used with all brands of 12-ton crimping tools that are designed to accept industry "U" style dies.

When used with Greenlee 12-ton tools, both series of dies are UL and cUL classified with Anderson®, Blackburn®, FCI Burndy®, IlSCO®, Panduit®, Penn-Union®, and Thomas & Betts® copper color-coded lugs and splices. This is a Greenlee exclusive!

The KD12CU and KD12AL crimping die kits are updated to include the new dies.

## PRODUCT FEATURES

- All dies produce a hexagonal style crimp - the style preferred by most customers.
- When used with Greenlee 12-ton tools, this entire series of dies are UL and cUL classified with Anderson®, Blackburn®, FCI Burndy®, IlSCO®, Panduit®, Penn-Union®, and Thomas & Betts® copper color-coded lugs and splices. This is a Greenlee exclusive!
- The KC12 and KA12 dies can be used up to the capacity of the tool with the following Greenlee tools:

EK1230	EK1230C	EK1240	EK1240C	CK1230	CK1240	HK1230	HK1230C
HK1240	HK1240C	HKL1230	RK1230	RK1230C	RK1240	RK1240C	RK1550*

\*requires 48802 adapters.

- These dies may be used with other brands of 12-ton crimping tools that are designed to accept industry "U" style dies.

## ORDERING INFORMATION

Cable Size	KC12				KA12			
	CAT. NO.	UPC NO.	COLOR	REPLACED PART	CAT. NO.	UPC NO.	COLOR	REPLACED PART
8 AWG	KC12-8	10996	RED	07378	KA12-8	22084	BLUE	35776
6 AWG	KC12-6	10997	BLUE	35776	KA12-6	22085	GRAY	35777
4 AWG	KC12-4	10998	GRAY	35777	KA12-4	22086	GREEN	35779
2 AWG	KC12-2	10999	BROWN	35778	KA12-2	22087	PINK	35780
1 AWG	KC12-1	11003	GREEN	35779	KA12-2	22088	GOLD	35791
1/0 AWG	KC12-1/0	11004	PINK	35780	KA12-1/0	22089	TAN	35792
2/0 AWG	KC12-2/0	11007	BLACK	35781	KA12-2/0	22090	OLIVE	35793
3/0 AWG	KC12-3/0	11010	ORANGE	35782	KA12-3/0	22121	RUBY	35794
4/0 AWG	KC12-4/0	11011	PURPLE	35783	KA12-4/0	22122	WHITE	35785
250 KCMIL	KC12-250	11012	YELLOW	35784	KA12-250	22123	RED	35786
300 KCMIL	KC12-300	11013	WHITE	35785	KA12-300	22124	BLUE	35787
350 KCMIL	KC12-350	11014	RED	35786	KA12-350	22125	BROWN	35788
400 KCMIL	KC12-400	11015	BLUE	35787	KA12-400	22126	GREEN	35789
500 KCMIL	KC12-500	11016	BROWN	35788	KA12-500	22127	PINK	35795
600 KCMIL	KC12-600	11018	GREEN	35789	KA12-600	22128	BLACK	35790
750 KCMIL	KC12-750	11020	BLACK	07379	KA12-750	22129	YELLOW	35796

CAT. NO.	UPC NO.	DESCRIPTION	QTY
KD12CU	10260	Crimping die kit. Kit contains all KC12 dies except KD12-8	1
KD12AL	10261	Crimping die kit. Kit contains all KA12 dies except KA12-8	1

### DISTRIBUTED BY:

All company names referred to in this data sheet are owned by each company.



USA	800-435-0786	Fax: 800-451-2632
	815-397-7070	Fax: 815-397-1865
Canada	800-435-0786	Fax: 800-524-2853
International	+1-815-397-7070	Fax: +1-815-397-9247

4455 Boeing Drive • Rockford, IL 61109-2988 • USA • 815-397-7070  
 ©2006 Greenlee Textron Inc. • An ISO 9001 Company • Printed in USA  
 Greenlee Textron Inc. is a subsidiary of Textron Inc.

www.greenlee.com

MA-4788 2/06