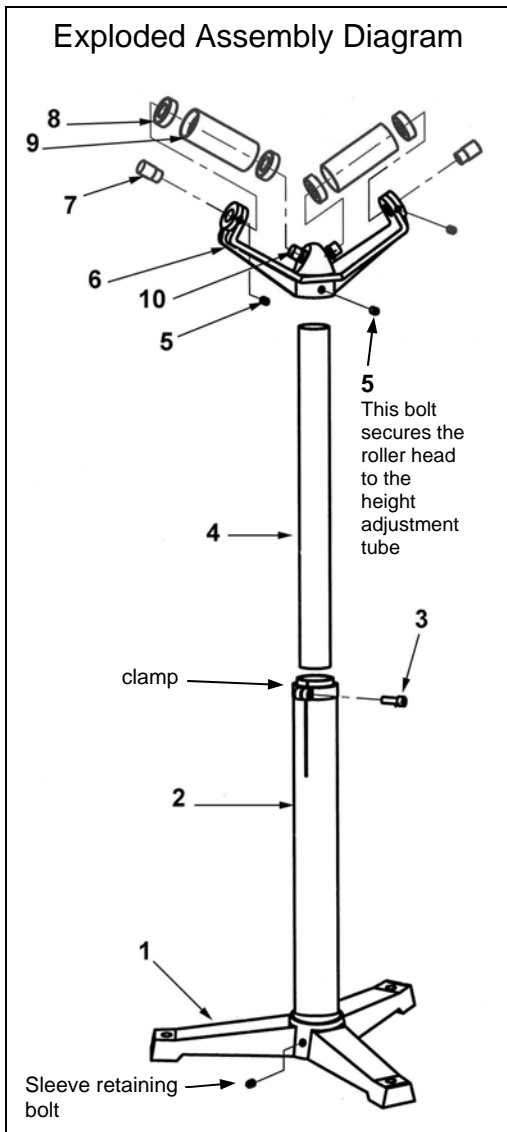


STAND-V SERIES ROLLER STANDS: ASSEMBLY INSTRUCTIONS



Step 1: Place the base (1) upright on the ground as shown in the exploded assembly diagram at left.

Step 2 Connect the outer sleeve (2) to the base: Insert the sleeve (2) into the central opening of the base (see Exploded Assembly Diagram). Loosen the sleeve retaining bolt, if necessary, to ensure that the sleeve firmly contacts the lip at the bottom of the central opening. Secure the sleeve to the base by tightening the retaining bolt.

Step 3 Install the height adjustment tube (4): Referring to Fig. 1 below, loosen the clamp on the outer sleeve (2) by turning the clamp bolt (3) counterclockwise; then slide the tube (4) into the outer sleeve (2). Hold the tube at the desired height while tightening the clamp by turning the clamp bolt clockwise.

Step 4 Attach the roller head (5-10) to the top of the height adjustment tube: Referring to Fig. 2, slide the roller head onto the top end of the height adjustment tube. It might be necessary to loosen the roller head retaining bolt. Secure the roller head to the tube by tightening the retaining screw.

Step 5 Adjust the height of the roller head: Stand-V model roller stands require manual height adjustment:

- Loosen the clamp bolt (3); then
- Adjust the height of the roller as desired; then
- tighten the clamp bolt.

Item No.	Description	Quantity
1	Base	1
2	Outer sleeve	1
3	M10 x 30 clamp bolt	1
4	Height adjustment tube	1
*5	M10 x 15 bolt	3
*6	Roller bracket	1
*7	Outer roller shaft	2
*8	Bearing	4
*9	Roller	2
*10	Inner roller shaft	2

*Item no.'s 5-10 together comprise the "roller head".

Max. rated load (capacity) = 1,760lbs (800kg)

Net weight (fully assembled) = 30lbs (~14kg)

Roller height range:

Stand-V = 23in. – 38in.

Stand-V-HP = 27in. – 42in.

