

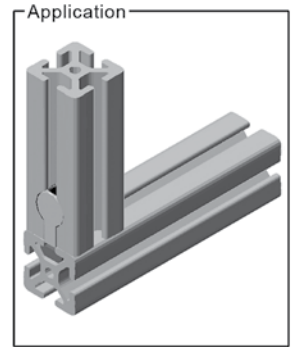


Anchor Fasteners: Fractional & Metric

15 Series Anchor Fastener Assembly w/ Standard T-Nut	
Part No. 15FAC3880	(5/16-18 T-Nut)
Part No. 15MFAC3720	(M8 x 1.25 T-Nut)
Very strong connection method	
Fast, easy assembly	
Corrosion resistant finish	
Zinc die casting material	
Infinite positioning along the T-slot	



15 Series Anchor Fastener Assembly w/ Drop-In T-Nut	
Part No. 15FAC3888	(5/16-18 T-Nut)
Part No. 15MFAC3728	(M8 x 1.25 T-Nut)
Very strong connection method	
Fast, easy assembly	
Corrosion resistant finish	
Zinc die casting material	
Infinite positioning along the T-slot	



Already have the hardware? Order the anchor body separately:

Part No. **15FA3610**



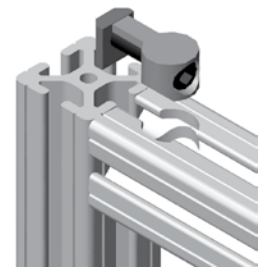
Machining Required

Service No.	Description
15MA9071	15 Series counterbore drilling service

See page 24 for machining information

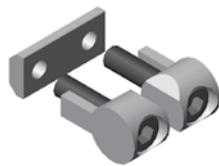
Assembly Instructions

1. Insert the assembled anchor fastener into the T-slot.
2. Set the mating extrusion 90° to the joining slot.
3. Place the anchor fastener into the counterbore of the mating extrusion.
4. Be sure the extrusions are properly aligned.
5. Tighten the anchor fastener with a 1/4" (fractional) or M5 (metric) ball end hex wrench.

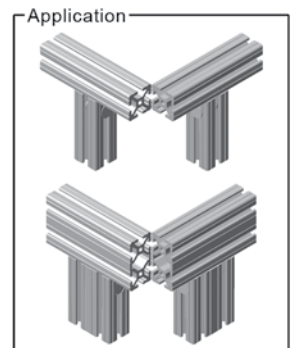
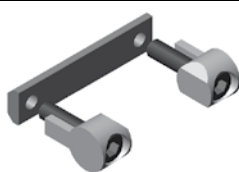


Double Anchor Fasteners

15 Series Double Anchor Fastener (1.5")	
Part No. 15FAC3882	
Quicker assembly	
For use with 1.5" extrusions	
Standard T-nut included	



15 Series Double Anchor Fastener (3.0")	
Part No. 15FAC3884	
Quicker assembly	
For use with 3.0" extrusions	
Standard T-nut included	



Machining Required

Service No.	Description
15MA9071	15 Series counterbore drilling service

See page 30 for machining information