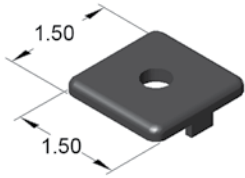




15AC7925

1.5" X 1.5" ENDCAP FOR EX & QE PROFILES

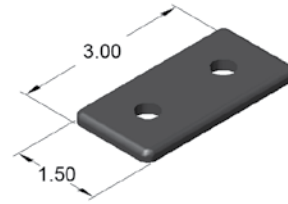
- 5/16-18 extrusion end tap required!



15AC7934 Push-in fastener included

15AC7930

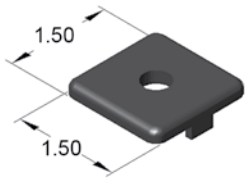
1.5" X 3.0" ENDCAP FOR EX & QE PROFILES



15AC7934 Push-in fasteners included

15AC7825

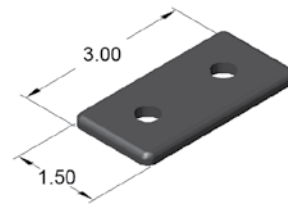
1.5" X 1.5" HEAVY DUTY ENDCAP FOR EX & QE PROFILES



13FA3322 5/16-18 screw included

15AC7830

1.5" X 3.0" HEAVY DUTY ENDCAP FOR EX & QE PROFILES

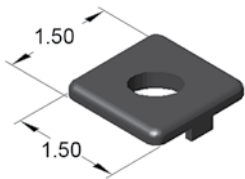


13FA3322 5/16-18 screws included

15AC7940

1.5" X 1.5" ENDCAP FOR SM PROFILES

- For 'SM' profiles only

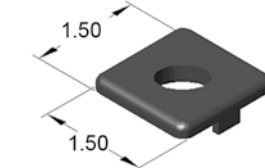


15AC7946 Push-in fastener included

15AC7840

1.5" X 1.5" HEAVY DUTY ENDCAP FOR SM PROFILES

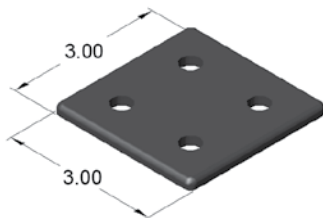
- 1/2-13 extrusion end tap required!
- For 'SM' profiles only



13FA3338 1/2-13 screw included

15AC7932

3.0" X 3.0" ENDCAP FOR EX & QE PROFILES

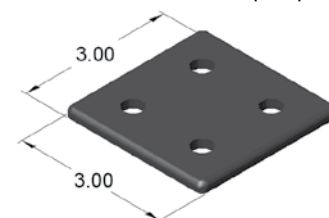


15AC7934 Push-in fasteners included

15AC7832

3.0" X 3.0" HEAVY DUTY ENDCAP FOR EX & QE PROFILES

- 5/16-18 extrusion end tap required!



13FA3322 5/16-18 screws included