



Anchor Fasteners: Fractional

10 Series Anchor Fastener Assembly w/ Standard T-Nut	
Part No. 10FAC3750 (10-32 Standard T-Nut)	
Very strong connection method	
Fast, easy assembly	
Corrosion resistant finish	
Zinc die casting material	
Infinite positioning along the T-slot	

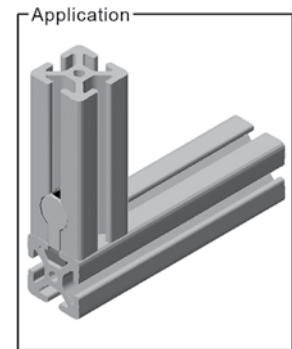
Machining Required

Service No.	Description
10MA9035	10 Series counterbore drilling service

See page 171 for machining information

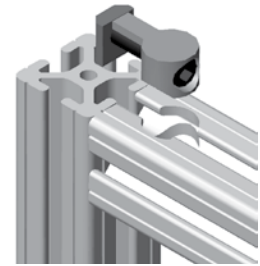
Assembly Instructions

1. Insert the assembled anchor fastener into the T-slot.
2. Set the mating extrusion 90° to the joining slot.
3. Place the anchor fastener into the counterbore of the mating extrusion.
4. Be sure the extrusions are properly aligned.
5. Tighten the anchor fastener with a 3/16".



Already have the hardware? Order the anchor body separately:

Part No. **10FA3700**



End Fasteners

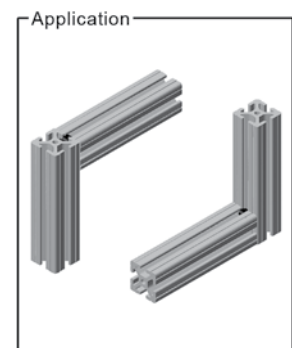
10 Series End Fastener Assembly	
Part No. 10FAC3755	
Strong 90° connection	
Ideal for tight spacing	
Creates a clean, hidden appearance	

Machining Required

Service No.	Description
(multiple)	End tap services - see pg. 168
(multiple)	Access hole services - see pg. 170

Assembly Instructions

1. Set the clip on the extrusion end over the tapped hole.
2. Thread the bolt into the hole, but do not fully tighten at this time.
3. Slide the bottom T-slot onto the clip of the mating extrusion.
4. Line up the access hole with the head of the bolt.
5. Tighten the end fastener with a 5/32".



Already have the hardware? Order the end clip separately:

Part No. **10FA3705**

