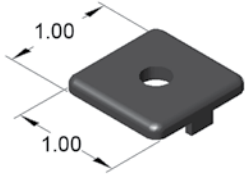




### 10AC7730

1.0" X 1.0" ENDCAP FOR EX & QE PROFILES

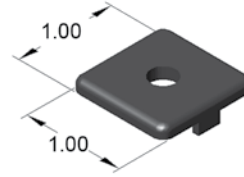


10AC7736 Push-in fastener included

### 10AC7630

1.0" X 1.0" HEAVY DUTY ENDCAP FOR EX & QE PROFILES

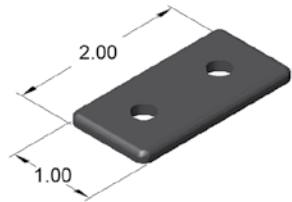
• 1/4-20 extrusion end tap required!



13FA3300 1/4-20 screw included

### 10AC7732

1.0" X 2.0" ENDCAP FOR EX & QE PROFILES

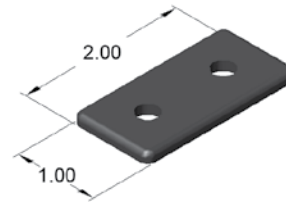


10AC7736 Push-in fasteners included

### 10AC7632

1.0" X 2.0" HEAVY DUTY ENDCAP FOR EX & QE PROFILES

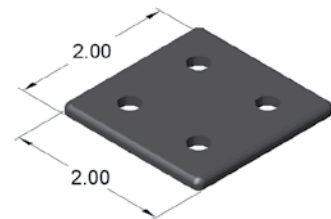
• 1/4-20 extrusion end tap required!



13FA3300 1/4-20 screws included

### 10AC7734

2.0" X 2.0" ENDCAP FOR EX & QE PROFILES

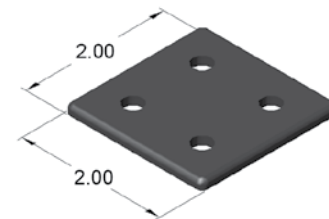


10AC7736 Push-in fasteners included

### 10AC7634

2.0" X 2.0" HEAVY DUTY ENDCAP FOR EX & QE PROFILES

• 1/4-20 extrusion end tap required!



13FA3300 1/4-20 screws included