

INSTALLATION INSTRUCTIONS FOR XLERATOR® HAND DRYER WITH HEPA FILTER



**FOR PROPER ELECTRICAL CONNECTIONS, CHECK YOUR LOCAL BUILDING CODES.
YOUR UNIT MUST BE INSTALLED BY A QUALIFIED, LICENSED ELECTRICIAN.**

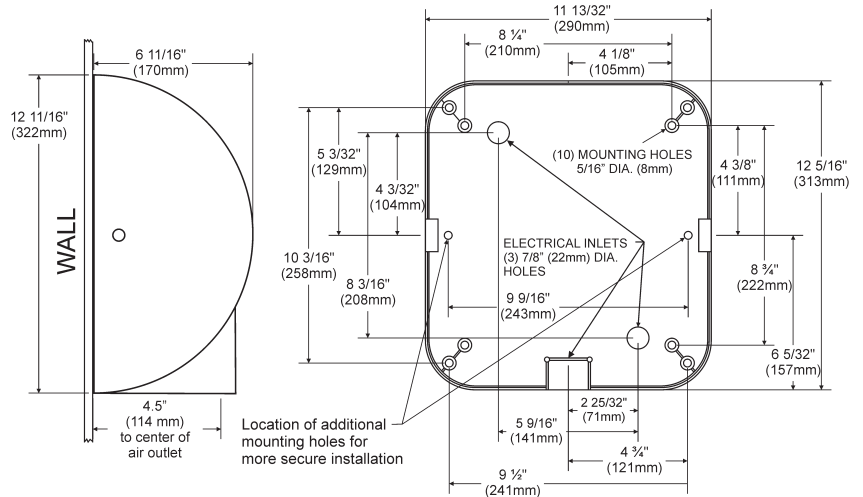
**SUGGESTED MTG. HEIGHTS FROM FLOOR
TO BOTTOM OF DRYER**

Men's	45" (1143 mm)
Ladies'	43" (1092 mm)
Teenagers'	41" (1041 mm)
Sm. Children	35" (889 mm)
Handicapped	37" (940 mm)

**IF MOUNTING OVER COUNTERTOP,
DISTANCE FROM COUNTER TO DRYER MUST
BE 15" (381MM) MINIMUM**

RECOMMENDED FASTENER

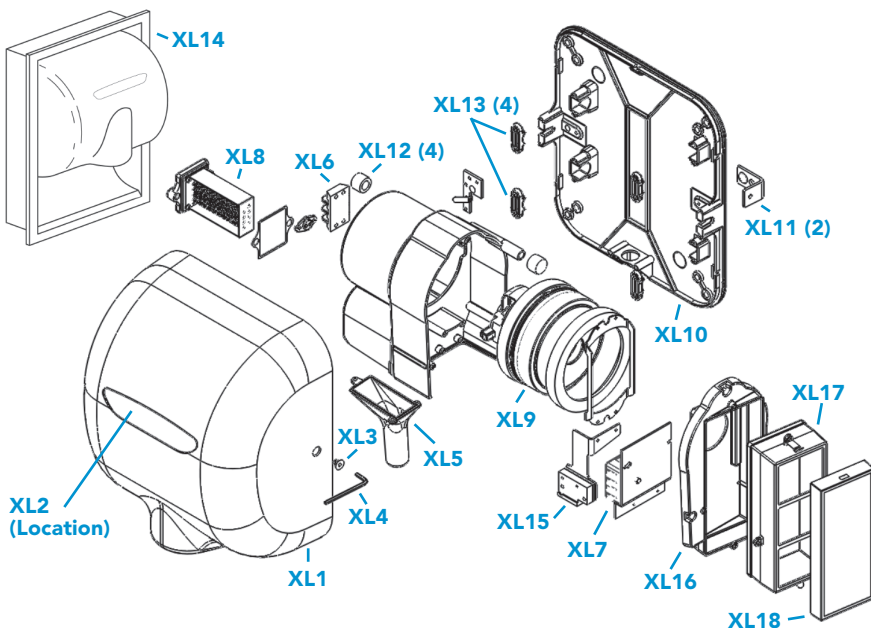
Masonry Wall	½" expansion sleeve with ¼" lag bolt
Hollow Wall	¼" wing type through bolt
Wooden Wall	¼" lag screw with washer



1. Remove cover of dryer by unscrewing two tamper-proof bolts from the sides of the cover with the special wrench provided with each unit.
2. Attach wall plate at the four corners to smooth wall. In locations where vandalism is a concern, use the two additional mounting holes shown. Remove control assembly to access right side mounting hole. Attach with the recommended type of fastener (see above).
3. Connect the corresponding dryer 110/120V (12.5 A), 208 (7A), 220/240V (6.5A) or 277V (5.5A) to a dedicated branch circuit not exceeding 20 Amp. Attach lines to terminals as indicated by the schematic affixed to blower housing. Be sure that an equipment ground wire is securely fastened to green ground screw on the grounding plate. Dryers should be installed per federal, state and local code requirements.
4. In multiple installations, before replacing cover, check the Serial Number marked inside the dryer to be sure it matches the Serial Number marked on the label at the bottom of cover. **PLEASE DO NOT SWITCH COVERS. Do not forget to leave the special TAMPER PROOF WRENCH with the owner.**

INSTALLATION NOTES

1. If the dryer will not turn on, stays on or stops working, it may be mounted too close to a counter or object. Turn off the power to dryer for 10 seconds and then reapply power. If dryer will start, then turn off again, relocate the object or remount dryer. If this is not possible, adjust the range of the sensor by turning the range adjustment on the control board, counterclockwise to decrease sensor range. Please call the factory at 1-800-255-9235 and one of our trained technicians will be happy to assist you.
2. Upon completing installation and checking for proper operation, it is highly recommended that a bead of silicone sealant be placed around the outside of the cover at the wall to protect dryer from internal corrosion caused by wash water and cleaning solutions.



PARTS LIST FOR XLERATOR DRYER

REF NO.	DESCRIPTION
XL 1	Cover (includes Nameplate)
XL 2	Nameplate
XL 3	Tamper-proof Bolt
XL 4	Tamper-proof Wrench
XL 5	Air Outlet (includes gasket)
XL 6	Terminal Block (includes screws)
XL 7	Control Assembly & Sensor
XL 8	Heating Element Assembly
XL 9	Motor
XL 10	Wall Plate Assembly
XL 11	Cover Mounting Brackets
XL 12	Housing Grommet
XL 13	Housing Retainer
XL 14	Recess Kit (for ADA)
XL 15	Optics Assembly (Sensor)
XL 16	HEPA Filter Adaptor
XL 17	HEPA Filter Certified
XL 18	HEPA Pre-Filter

NOTE: MODEL, SERIAL NUMBER AND VOLTAGE OF THE DRYER MUST BE INCLUDED WHEN ORDERING PARTS.

CLEANING INSTRUCTIONS

DRYER OUTSIDE

Gently wash cover (including air inlet holes) using a soft cloth or sponge and a mild soap or detergent with lukewarm water to loosen dirt and grime.

DRYER INSIDE

WARNING: TO REDUCE THE RISK OF ELECTRIC SHOCK, FIRE AND PERSONAL INJURY, INSIDE CLEANING MUST BE PERFORMED BY QUALIFIED ELECTRICAL SERVICE PERSONNEL. DISCONNECT POWER PRIOR TO SERVICING.

Excel recommends that the pre-filter be cleaned four times per year. Do this by disconnecting the power to the dryer, removing the cover, unclipping the pre-filter, rinsing the pre-filter with water, drying the pre-filter and re-installing it. **DO NOT** remove and rinse the HEPA filter. If the pre-filter accumulates excessive lint, or debris, increase the cleaning schedule accordingly. Decrease the cleaning schedule if no debris is found on the quarterly cleaning schedule. The HEPA filter does NOT have a maintenance schedule. Lint on the air inlet or other internal parts of dryer will reduce efficiency and shorten the life of the working parts. Use a small, soft brush to gently clean all parts.

TROUBLESHOOTING

WARNING: TO REDUCE THE RISK OF ELECTRIC SHOCK, FIRE & PERSONAL INJURY, ALL TROUBLESHOOTING AND REPAIRS MUST BE PERFORMED BY QUALIFIED ELECTRICAL SERVICE PERSONNEL.

IF YOUR DRYER DOES NOT TURN ON

1. Verify that the dryer is receiving power by checking electrical service, circuit breaker or fuse to the dryer.
2. Check voltage to dryer terminal block.
3. Check RED service LED light for the following:
Light is ON – Place hands under sensor. If light stays on, then replace sensor. If light goes off, check to make sure wiring is correct at dryer control. If OK, check motor fuse if so equipped, and wire connecting to motor. If both are OK, replace motor.
Light is OFF – Check for loose, disconnected or improper wiring at dryer control (See wiring schematic inside dryer), or replace dryer control.
Light is FLASHING – Dryer is in lockout mode. (See installation note.)

IF YOUR DRYER DOES NOT SHUT OFF

1. May be mounted too close to a counter or object (See installation note).
2. Check for loose, disconnected or improper wiring at dryer control. (See wiring schematic inside dryer)
3. Replace dryer control.

IF YOUR DRYER HEATS UP BUT NO AIR COMES OUT

1. Check motor fuse if so equipped.
2. Check wire connection to motor
3. Replace motor.

IF YOUR DRYER DOES NOT ALWAYS TURN ON, OR TURNS ON BY ITSELF

1. May be mounted too close to a counter or object (See installation note).
2. Check for foreign material on optical sensor next to air outlet.
3. Check for loose wires on dryer control.
4. Replace dryer control.

IF YOUR DRYER BLOWS ONLY COLD AIR

1. Check for loose connections to heating element.
2. Replace heating element.

IF YOUR DRYER HAS A LOSS OF AIR VOLUME

1. Check HEPA pre-filter for lint build up. Clean by removing pre-filter and rinse in warm water then dry pre-filter before reinstalling.
2. If pre-filter is clean check HEPA filter for signs of clogging. Replace HEPA filter if needed.
3. Check for air leaks at the heating element or nozzle. If leaking, replace heating element or nozzle.
4. Check for slow running motor or burning smell. If so, replace motor.

NOTE: IF THE PROBLEM CANNOT BE RESOLVED WITH THE ABOVE, PLEASE CALL THE FACTORY AT 1-800-255-9235 AND ONE OF OUR TRAINED TECHNICIANS WILL BE HAPPY TO ASSIST YOU.

5-YEAR LIMITED WARRANTY

1. This product is warranted to be free of manufacturing defects for five (5) years (one 1 year on HEPA filter & pre-filter) from the date of shipment from the Manufacturer's factory at 357 Chestnut St., East Longmeadow, Massachusetts 01028. This warranty explicitly excludes normal wear and tear on the filter or pre-filter, as well as faulty installation, accident, misuse, or vandalism.
In the event of a breach of the warranty described above, the Owner shall have either one of the following remedies:
 - a. The Owner shall return the defective product to the Manufacturer, postage prepaid, and the Manufacturer shall repair said product within a reasonable time and free of charge, provided that said product is returned within the stated period above from the date of original shipment from the Manufacturer's factory in East Longmeadow, Massachusetts; and, provided further that said defect is not due to faulty installation, accident, misuse, or vandalism; or
 - b. The Owner may notify the Manufacturer by telephone or in writing of the defect and, within a reasonable time, the Manufacturer shall send a suitable replacement part to remedy said defect, and Owner shall be charged for said part at the current price level. The Owner may return the defective part to the Manufacturer, postage prepaid, along with the serial number of the defective product and the Manufacturer will then issue to the Owner a full credit for the repair part, including outgoing postage. Said remedy is available only within the period stated above from the date of original shipment of the product from the Manufacturer's factory in East Longmeadow, Massachusetts, and provided further that said defect is not due to faulty installation, accident, misuse, or vandalism.
2. Any implied warranties of merchantability or fitness for a particular purpose are hereby limited to the duration of the express written warranty contained in paragraph one (1); namely, five (5) years (one 1 year on HEPA filter & pre-filter) from the date of shipment from the Manufacturer's factory in East Longmeadow, Massachusetts.
3. There are no other warranties and remedies except as contained herein. This warranty shall inure to the benefit of the Owners, Successors and Assigns.



TIME TO THROW IN THE TOWEL

Excel Dryer, Inc. • 357 Chestnut Street • East Longmeadow, MA 01028 U.S.A.

Tel: (413) 525-4531 • Toll Free: (800) 255-9235 (U.S. & Canada) • Fax: (413) 525-2853

sales@exceldryer.com • www.exceldryer.com