



# JOB HUT™

**OUTDOOR STORAGE HAS NEVER BEEN SO PRACTICAL...OR SO AFFORDABLE!**

If access, efficiency, and a large storage area are what you need then Job Hut™ is your answer.

An extra large surface area allows for storage of eight (8) 55-gallon drums right on their pallets! The low profile design allows for easy access, and is forkliftable from all sides for effortless handling. Job Hut features newly-enhanced doors and lock provide added strength and security.

Tough polyethylene construction won't rust or corrode while UV inhibitors make Job Hut™ extra durable for outdoor use. A large 72-gallon sump capacity eliminates the risk of spills or leaks and structural foam grates remove for easy cleaning. Molded-in vents reduce fumes and condensation inside, and heavy-duty hinges with lock keep contents secure.

The Job Hut™ offers substantial savings when compared to similar metal or concrete storage buildings, while providing superior performance. The optional ramp facilitates loading your drums into the unit. Safe, secure, and cost-effective; One piece-no assembly!



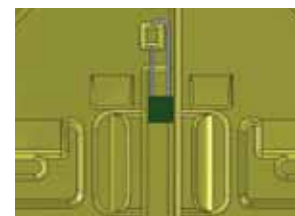
**CHECK OUT OUR  
POLY-SPILLPALLET  
HARDCOVER™ OPTIONS –  
ON PAGE 10  
FOR ADDITIONAL  
STORAGE OPTIONS.**

- 100% polyethylene with UV inhibitors for increased durability
- Three removable structural foam grates hold 8,000 lb Handling Capacity weight
- Low profile design allows for easy access. Extra-wide 57" x 78" doorway allows for easy forklift entry
- 4-way forkliftable design for ease in handling
- Newly-enhanced! Heavy-duty, double-walled doors and lock for added security
- Built-in 72-gallon sump capacity



**ENHANCED DESIGN!**

Door opening 57" W x 78" H



Newly updated lock & handles.



Grates remove for easy cleaning.



Tie-down feature for secure anchorage.

## JOB HUT™

Part #	Int. Dimension L x W x H in. (cm)	Ext. Dimension L x W x H in. (cm)	Weight lb. (kg)	Spill Cap. gal. (L)	Load Cap. lb. (kg)
4010-YE	70 x 51 x 82 (178 x 130 x 208)	85.6 x 61.5 x 94 (217 x 156 x 239)	480.2 (217.8)	72 (272.5)	8,000 (3,629)

Regulations: EPA 40 CFR 264.175, SPCC, NPDES and UFC

## MULTI-PURPOSE WORK RAMP™ LOAD 'EM UP!

Load drums in a cinch with the Multi-Purpose Work Ramp™. Lightweight and easy to handle, ramp attaches to the Job Hut™ in a snap! Improved non-skid surface eliminates risk of slipping. Features a 10° slope for easy loading. Also compatible with workstations™ (see page 11).



## MULTI-PURPOSE WORK RAMP™

Part #	Dimensions in. (cm)	Weight lb. (kg)	Load Cap. lb. (kg)
5111-BK	25.38 x 46 x 6.13 (64 x 117 x 16)	29.8 (13.5)	1,000 (454)