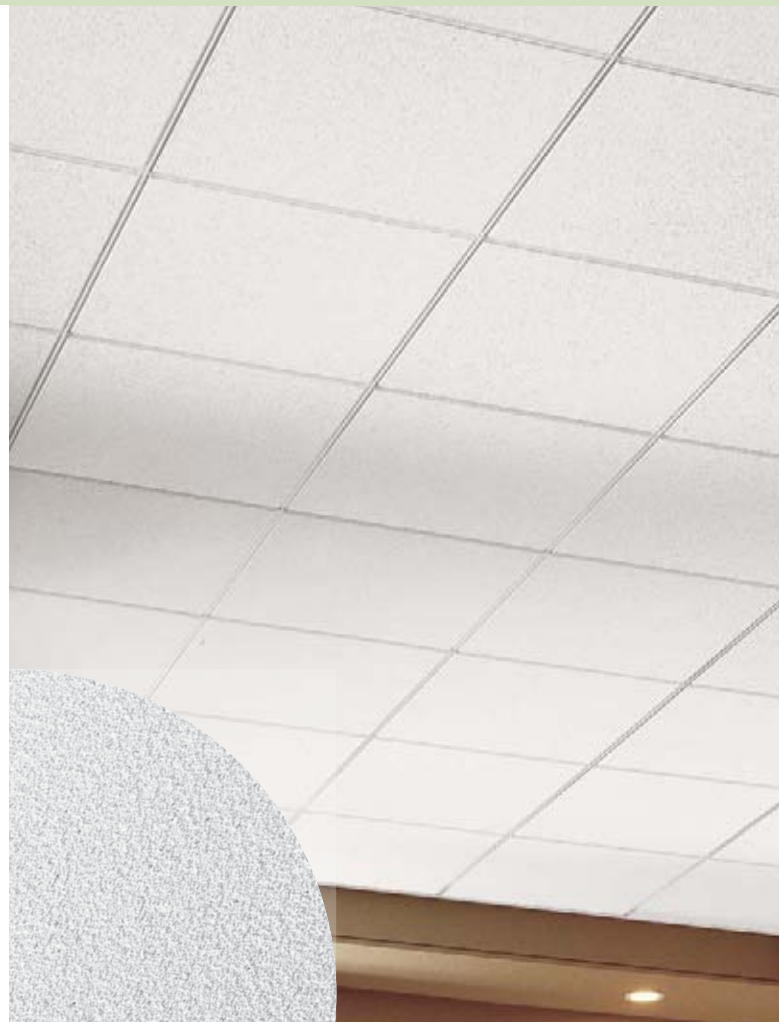




Items 1772, 1773, 1774, 1775 & 1776



Dune Square Lay-in with Prelude® XL 15/16" suspension system (Pg. 215); Axiom® Classic Trim (Pg. 236)



Dune Tegular with Interlude® XL 9/16" suspension system (Pg. 211); Axiom® Classic Trim (Pg. 236)

Key Selection Attributes

- Upgrade look at a modest price
- Ceiling-2-Ceiling™ Post-consumer Recycled Content options: Items 1773HRC, 1774HRC, 1775HRC, 1776HRC, 1777HRC (check armstrong.com/greengenie)
- Durable Scratch-resistant
- Non-directional visual reduces installation time and scrap
- 30-Year Limited System Warranty against visible sag (excludes items 1796 and 1798), mold/mildew, and bacterial growth

Typical Applications

- Offices
- Corridors
- Retail
- Hospitality
- Classrooms

Detail (Other Suspension Systems compatible. Refer to listing on page 156.)

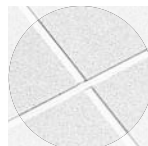
Color



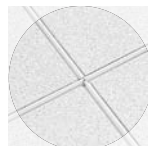
Dune



Dune Square Lay-in with Prelude 15/16" suspension system



Dune Tegular with Suprafine® 9/16" suspension system



Dune Tegular with Interlude XL 9/16" suspension system



Dune Tegular with Silhouette® XL 9/16" suspension system 1/4" Reveal



White (WH)



The post-consumer recycled content of these items is from reclaimed ceilings

Recycled Content: Up to 53%

armstrong.com/greengenie

LEED® Credits

| | | | | | |
|--------|------------|------------------|-----------------|---------------------|------------------|
| Energy | Waste Mgmt | Recycled Content | Local Materials | Renewable Materials | Daylight & Views |
| ✓ | ✓ | ✓ | ✓ | ✓ | ✓ |

Location Dependent

LEED for Schools

| | |
|-----------|----------------------|
| Acoustics | Low Emitting or CHPS |
| ✓ | ✓ |

EPD Environmental Product Declaration
Items 1772, 1773, 1774, 1775, 1776, 1777, 1796, 1798



Visual Selection

Performance Selection

Dots represent highest level of performance.

| Edge Profile | Grid Drawings Cat. pgs. 226-228 or armstrong.com/ catdwg | Item No. | Dimensions | UL Classified | | Fire Rating | Light Reflect | Sag Resist | Anti-Microbial | Durable | Recycle Program | |
|---------------------------|---|---|---------------------------------------|---------------|------|-------------|---------------|------------|----------------|-----------|-----------------|-----|
| | | | | Acoustics NRC | CAC | | | | | | | |
| DUNE Square Lay-in | | | | | | | | | | | | |
| | 1 | 1772 1772M | 2' x 2' x 5/8" 600 x 600 x 15mm | □ | 0.50 | 30 | Class A | 0.83 | HumiGuard+ | BioBlock+ | Scratch | Yes |
| | 1 | 1850 1850M | 2' x 2' x 5/8" 600 x 600 x 15mm | □ | 0.50 | 35 | Fire Guard | 0.83 | . | . | . | . |
| | 1 | 1773 1773M 1773HRC | 2' x 4' x 5/8" 600 x 1200 x 15mm | □ | 0.50 | 33 | Class A | 0.83 | . | . | . | . |
| | 1 | 1851 1851M | 2' x 4' x 5/8" 600 x 1200 x 15mm | □ | 0.50 | 35 | Fire Guard | 0.83 | . | . | . | . |
| | 1 | 1796 1796M | 20" x 5' x 5/8" 500 x 1500 x 19mm | □ | 0.50 | 35 | Class A | 0.83 | Standard | . | . | . |
| | 1 | 1798 1798M | 30" x 30" x 3/4" 750 x 1500 x 19mm | □ | 0.50 | 35 | Class A | 0.83 | Standard | . | . | . |
| DUNE Tegular | | | | | | | | | | | | |
| | 31-34, 54 | 1775 1775M 1775HRC | 2' x 2' x 5/8" 600 x 600 x 15mm | □ | 0.50 | 35 | Class A | 0.83 | . | . | . | . |
| | 31 | 1852 | 2' x 2' x 5/8" | □ | 0.50 | 35 | Fire Guard | 0.83 | . | . | . | . |
| | 31-34, 54 | 1777 1777M 1777HRC | 2' x 4' x 5/8" 600 x 1200 x 15mm | □ | 0.50 | 35 | Class A | 0.83 | . | . | . | . |
| | 6 | 1774 1774M 1774HRC | 2' x 2' x 5/8" 600 x 600 x 15mm | □ | 0.50 | 35 | Class A | 0.83 | . | . | . | . |
| | 6 | 1853 | 2' x 2' x 5/8" | □ | 0.50 | 35 | Fire Guard | 0.83 | . | . | . | . |
| | 6 | 1776 1776M 1776HRC | 2' x 4' x 5/8" 600 x 1200 x 15mm | □ | 0.50 | 35 | Class A | 0.83 | . | . | . | . |

Suspension Systems



Item 1775-CAC 33 on 9/16" Interlude, Sonata, Suprafine

Physical Data

Material
Wet-formed mineral fiber

Surface Finish
Factory-applied latex paint

Fire Performance
ASTM E84 and CAN/ULC S102 surface burning characteristics. Flame Spread Index 25 or less. Smoke Developed Index 50 or less. (UL labeled) Fire Guard™: A fire resistive ceiling when used in applicable UL assemblies

ASTM E1264 Classification
Type III, Form 2, Pattern C E
Fire Class A

Sag Resistance
HumiGuard® Plus – superior resistance to sagging in high humidity conditions up to, but not including, standing water and outdoor applications.

VOC/Formaldehyde Emissions
Meets CA Dept. of Health Services Standard Practice for the testing of VOC Emissions and is listed on CHPS High Performance Products Database for Low-Emitting Materials.

Anti Mold/Mildew & Bacteria
BioBlock® Plus contains an anti-microbial treatment and provides guaranteed resistance against growth of mold/mildew and Gram-positive and Gram-negative odor/stain-causing bacteria for 30 years.

Insulation Value
R Factor – 1.6 (BTU units)
R Factor – 0.28 (Watts units)

30-Year Performance Guarantee & Warranty Information
Details in back of catalog or at armstrong.com/warranty

Weight; Square Feet/Carton
1772 – 0.94 lbs/SF; 64 SF/ctn
1773 – 0.88 lbs/SF; 80 SF/ctn
1796 – 1.33 lbs/SF; 67 SF/ctn
1798 – 1.14 lbs/SF; 50 SF/ctn
1850 – 1.19 lbs/SF; 48 SF/ctn
1851 – 1.22 lbs/SF; 64 SF/ctn
1774, 1775 – 0.75 lbs/SF; 64 SF/ctn
1776, 1777 – 0.75 lbs/SF; 80 SF/ctn
1852, 1853 – 1.20 lbs/SF; 48 SF/ctn



EPD