



User's Guide/Specifications

# Floor Savers™ Floor Repair Compounds

Protect your floors from chemical attack, reduce wear and tear, increase safety and improve appearance with Devcon® FloorSavers™ products.

Slippery floors and cracks present hazard areas. Reduce these potential hazards with Devcon FloorSavers™.



www.devcon.com



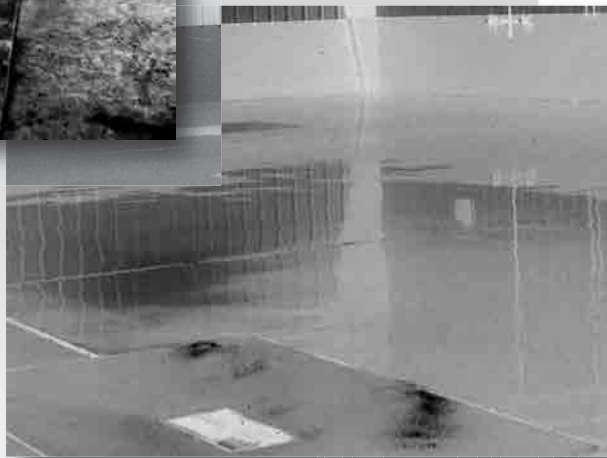
## Table of Contents

PAGE

<b>Surface Preparation</b>	<b>2</b>
<b>Cleaning &amp; Priming</b>	<b>3</b>
<b>Patching &amp; Repairing Concrete</b>	<b>4</b>
<b>Protective Coating &amp; Skid Proofing</b>	<b>5</b>
<b>Physical &amp; Chemical Properties Guide</b>	<b>6</b>
<b>Application Guide &amp; Ordering Information</b>	<b>7</b>



**Before**



**After**

## Surface Preparation

To maximize the advantages of FloorSavers™ products, proper surface preparation is essential. Surface conditions will vary from job to job, and the following guidelines will help in the preparation for most repairs.

Determine your needs and priorities first with a complete floor survey, from high traffic areas to low traffic areas to determine if damage is being caused by moisture, leaking chemicals or variations from temperatures. Even the smallest cracks can result in future failure and a simple coating might prevent costly repairs later on.

Please, contact Devcon's Technical Service if your problem is not addressed in this guide, or you have any questions about how to proceed with your repairs and coatings.

Questions? Contact Devcon Technical Services:

**800-933-8266** [www.devcon.com](http://www.devcon.com)

# Cleaning & Priming



◀ Figure 1



◀ Figure 2



◀ Figure 3



◀ Figure 4

## APPLICATION TIPS

- Wear protective clothing and equipment.
- Area should be well ventilated.
- Temperature can greatly affect cure and pot life of epoxies. Normal application temperature is 72°F. Lower temps will increase cure time and higher temps will decrease cure time.
- Use a variable speed, heavy duty drill with a Jiffy Mixing Blade Model HS or equivalent. Do not move blade up and down while mixing as this may create unwanted bubbles to form.
- Set up barriers to prevent damage to new repair until it has properly, and fully cured.

## CLEANING SURFACES

### CHEMICAL (Figure 1)

1. Thoroughly clean area with a strong detergent using power scrubbing equipment or pressure washing.
2. Ensure all surface contamination (dirt, grease, oil, etc.) are removed from surface.

### ABRASIVE BLASTING (Figure 2)

Using high speed steel shot creates a clean surface and sound profile for coating. This will take off all concrete curing agents, sealers and latents from the floor.

### SCARIFYING

Also recommended to create a good, yet deeper, surface profile.

### SCABBING (Figure 3)

Utilizes air-driven hammers to remove the top layer of concrete for an acceptable surface profile.

### HAND SCRAPING AND GRINDING

Also acceptable methods of achieving a good surface profile.

### SPOT TEST TO ENSURE PROPER BONDING

To ensure proper bonding, a spot test is highly recommended. Mix a small quantity of coating material to be used and apply to a *clean* test area. If the paint doesn't "wrinkle off", leave for 5 days, then test the bond by scraping with a putty knife or use the "tape" test as follows: cut an "X" into the surface, place the tape firmly over the cut, then remove tape with a hard, fast pull. If the test coating fails either test, remove the old finish as described above.

### PREVIOUSLY COATED CONCRETE

The use of Devcon's epoxy coatings over previously coated surfaces should be considered a short term application due to the nature of the integrity of the previous coating. Paint which is peeling or degrading in any way *must be completely removed* by sanding, a paint stripper or abrasive blasting.

If paint is intact, clean surface thoroughly with a strong detergent and abrade to roughen surface.

## PRIMING SURFACES

### CONCRETE SURFACES (Figure 4)

All prepared concrete surfaces should first be coated with a 6-8 mil coating of **Epoxy Coat™ 7000 Non VOC #12710**. **Epoxy Coat™ 7000 Non VOC #12710** should be thinned with mineral spirits by 10% to act as a primer to "wet into" the pores of the concrete for a good, thin first coat. This prime coat will reduce outgassing if the concrete is porous. **Epoxy Coat™ 7000 Non VOC #12710** can be applied with a 3/8" epoxy nap roller. A squeegee can also be spread first for larger applications and then "back rolled" with a roller for a final smooth 6-8 mil thick coating.

### ROUGH AND PITTED SURFACES

Extremely rough and pitted concrete may require a 2-step priming process of approximately 6 wet mils per coat.

### METAL SURFACES

It is *essential* that all surfaces must be roughened, ideally by grit blasting (10-40 mesh grit size) or by grinding with a coarse wheel or disk to create edges to lock into (all abrasive preparation should be preceded by chemical cleaning with Devcon's **Cleaner Blend™ 300 #19510**, to remove all traces of oil, grease, dust and other foreign substances).

### CONTAMINATED METAL SURFACES

Metal that has been contaminated by sea water, or other salt solutions, should be grit and high pressure water blasted. Let dry overnight to allow any salts in the metal to "sweat" to the surface. Repeat if necessary. A test for chloride content should also be done prior to applying epoxy.

Questions? Contact Devcon Technical Services:

800-933-8266

[www.devcon.com](http://www.devcon.com)



## Patching & Repairing Concrete



◀ Figure 1

The most common repairs are to cracks and holes in concrete floors. Spalling or complete floor deterioration may have occurred.

Without proper coatings, damage from chemicals, acids or moisture will continue. **Floor Patch™** and **Ultra Quartz™** provide excellent protection for these problem areas.

**First, follow the guidelines previously described for SURFACE PREPARATION.**

### FLOOR PATCHING (Figure 1)

Ideal for most patching repairs. A three-part system that includes resin, hardener and aggregate for strong, economical repairs. Trowel on **Floor Patch™ #13100/13120** at a minimum of 1/4". Allow to cure for 16 hours.

**Floor Patch™ FC #13110** is a fast curing version of **Floor Patch™**. Packaged with a Primer for applications in cold or wet environments. Hardens in 15 minutes, functional cure in 3 hours.

### EXPANSION JOINTS (Figure 2)

For expansion joints, fill with Devcon's **Flexane® Fast Cure Liquid #15050**. See coverage chart below.

### NEW! CRACKS AND GAPS (Figure 3)

**FloorSavers™ Concrete Crack Repair #13400** is a self-leveling urethane compound designed to repair cracks and gaps in concrete - quickly and easily. Grey in color and cartridge fits in a standard caulking gun. Coverage is 20.3 linear feet at 1/4" wide x 1/4" deep gap.

### FILL HOLES (Figure 4)

Use **Deep Pour Grout™ #13800** for rebuilding worn concrete or pouring equipment pads up to 6" deep. Bonds to concrete or metal and resists most chemicals.

### ACID RESISTANT FLOOR PATCHING (Figure 5)

**Ultra Quartz™ #13550** is a premium quality, three component, 100% solids formulation quartz aggregate and priming system. The color matches that of concrete. Generally recommended for making repairs where the area may be prone to chemical or acid attack.

### NEW! FLOOR RESURFACING (Figure 6)

Use **Floor Patch™ Resurfacer #13130** to rebuild concrete surfaces that have worn to the aggregate in areas. Apply the self-leveling Resurfacer using a squeegee to a minimum of 1/4" for best results. The Resurfacer takes un-even surfaces and levels them to the original smooth concrete surface.

### FLEXANE® FAST CURE LIQUID #15050

Linear coverage per gallon (1 gallon = 9 Cartridges)

	Joint Width						
Joint Depth	1/4"	3/8"	1/2"	5/8"	3/4"	7/8"	1"
1/4"	308'	205'	154'	123'			
3/8"				82'	68'	58'	51'
1/2"				62'	51'	44'	38'



◀ Figure 2



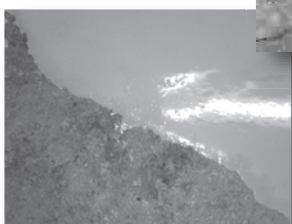
◀ Figure 3



◀ Figure 4



◀ Figure 5



◀ Figure 6

Questions? Contact Devcon Technical Services:

**800-933-8266**      **www.devcon.com**

## Protective Coatings & Skid Proofing



◀ Figure 1



◀ Figure 2



◀ Figure 3



◀ Figure 4



◀ Figure 5

Devcon's Epoxy Coatings ensure durable and reliable protection, improved appearance and ease of maintenance. 100% solids formulation provide smooth, even surfaces, resistant to solvents and harsh chemicals.

Anti-skid coatings help prevent injury as well as provide traction on ramps and inclined areas. Also use in areas where spills may occur such as walkways, passageways and exterior surfaces exposed to moisture.

**First, follow the guidelines previously described for SURFACE PREPARATION.**

1. Mix coating for 2 minutes, following directions included with product (Figure 1).
2. Protect areas you don't wish to coat, such as a threshold, floor outlets, walls, etc., by covering with duct tape. Remove tape before coating dries (Figure 2).
3. Apply epoxy coating with a 3" - 4" brush, a 3/8" epoxy nap roller or notched squeegee as shown (Figure 3).

### COATINGS (Figure 4)

**Epoxy Concrete Sealer #12560** is a two-part system that cures clear, uses non-corrosive hardener that has excellent solvent and chemical resistance. Can also be pigmented to any color (consult Devcon Technical Services).

**Epoxy Coat™ 7000 Non VOC #12710** two-part grey epoxy system is an excellent coating for warehouse floors aisles, and maintenance shop floors.

**Epoxy Coat™ 7000 AR #12750** two-part grey epoxy system is a novalac system formulated to protect surfaces from severe acid and chemical attack. Use around chemical storage tanks, dike walls and containment areas.

**NOTE:** The use of **Epoxy Coat™ 7000 Non VOC #12710** and **Epoxy Concrete Sealer #12560** may create a smooth surface that is very slippery when wet.

### ANTI-SKID COATINGS (Figure 5)

**Floor Grip™ #13090** is a three-part black epoxy coating system that is applied to a floor and then silicon carbide is broadcast over the area.

Questions? Contact Devcon Technical Services:

800-933-8266 [www.devcon.com](http://www.devcon.com)

# Typical Physical Properties

7 Days @ Room Temperature

	Coverage, sq. ft. (DTF)	Viscosity with Hardener (cps)	Application Temperature (min. °F)	Pot Life in minutes	Functional Cure Time, in hours @ 75°F	Operating Temperature (max. °F)	% of Solids	Recoat Time, in hours @ 75°F
<b>FLOORING REPAIR PRODUCTS</b>								
Ultra Quartz™	13 @ .25"/35 lb.	Putty	60	60	16	250	100	6-8
Floor Patch™*	18 @ .25"/40 lb.	Putty	60	45	16	250	100	6-8
Floor Patch™ FC*	4.5 @ .25"/10 lb.	Putty	60	15	3	250	100	1
FloorSavers™ Concrete Crack Repair	20.3 @ .25"/250 ml.	3,250	50	1.5	30 min.	250	100	N/A
Deep Pour Grout™	640 cu. in/50 lb.	13,000	50	40	16	180	100	2-3
Floor Patch™ Resurfacer	568 cu. in/41 lb.	5,000	50	40	16	180	100	6
Floor Grip™	200 @ 16mil/2 gal.	2,000	40	50	24	250	100	8-10
Epoxy Concrete Sealer	400 @ 8mil/2 gal.	2,000	40	60	24	180	100	8-10
Epoxy Coat™ 7000 Non VOC	400 @ 8mil/2 gal.	2,000	55	55	24	180	100	10-12
Epoxy Coat™ 7000 AR	200 @ 16mil/2 gal.	3,600	60	36	24	200	100	4-6

NOTE: Application coverage figures are based on applying the compound to a smooth, sound concrete surface. Actual coverage will vary on porous and rough surfaces.

# Chemical Resistance

KEY: E = Excellent  
 VG = Very Good  
 G = Good  
 F = Fair  
 U = Unsatisfactory

	Kerosene	Hydrochloric Acid 10%	Chlorinated Solvents	Sulfuric Acid 10%	Methanol	Toluene	Ammonia	Sodium Hydroxide 10%
<b>FLOORING REPAIR PRODUCTS</b>								
Ultra Quartz™	E	E	E	E	VG	E	E	E
Floor Patch™*	VG	VG	F	VG	F	U	VG	VG
Floor Patch™ FC*	VG	VG	F	VG	F	U	VG	VG
Deep Pour Grout™	VG	VG	U	VG	F	U	VG	VG
Floor Patch™ Resurfacer	U	U	U	U	U	U	VG	E
Floor Grip™	VG	VG	E	VG	U	VG	VG	E
Epoxy Concrete Sealer	VG	VG	E	VG	U	G	VG	E
Epoxy Coat™ 7000 Non VOC	VG	VG	VG	VG	F	G	E	E
Epoxy Coat™ 7000 AR	E	E	U	E	U	E	VG	E

NOTE: Epoxies are very good in water, saturated salt solution, leaded gasoline, mineral spirits, ASTM#3 Oil and propylene glycol. Epoxies are generally not recommended for long-term exposure to concentrated acids and organic solvents.

# Ordering Information

PRODUCTS	STOCK NO.	SIZE
Ultra Quartz™	13550	35 lb.
Floor Patch™*	13100	10 lb.
	13120	40 lb.
Floor Patch™ FC*	13110	10 lb.
FloorSavers™ Concrete Crack Repair	13400	250 ml.
Deep Pour Grout™	13800	50 lb.
Floor Patch™ Resurfacer	13130	41 lb.
Floor Grip™	13090	2 gal.
Epoxy Concrete Sealer	12560	2 gal.
FL-20 Primer	15985	4 oz.
Epoxy Coat™ 7000 Non VOC	12710	2 gal.
Epoxy Coat™ 7000 AR	12750	2 gal.



Questions? Contact Devcon Technical Services:  
 800-933-8266 [www.devcon.com](http://www.devcon.com)

## Usage Selector Guide

# MRO

Maintenance,  
Repair &  
Operations



	Plastic Steel® Putty (A)	Aluminum Putty (F)	Titanium Putty	Magic Bond™	Wear Guard™	Ceramic High Temp.	Brushable Repair Putty	Wear Guard™ High Load, Ultra	Plastic Steel® B Alum. F2	Stainless Steel Putty (ST)	Permatex® Threadlockers	Permatex® Retaining Compounds	Permatex® Thread Sealants
<b>METAL/EQUIPMENT REPAIR</b>													
Acid Resistant Coating													
Casting Repair	▲	▲	▲										
Chemical Resistant Coatings		▲											
Chocking, Leveling Compound									▲				
Coating (Impact, Abrasion)				▲	▲	▲	▲	▲					
Condenser Tube Sheet Coating													
Corrosion Resistant Coating				▲	▲	▲	▲	▲					
Cyclones				▲	▲	▲	▲	▲					
Epoxy (Fast-Cure Repairs)			▲										
Fans/Exhauster Fan Blades								▲					
Holding Fixtures (Making Molds)										▲			
Hopper (Rebuild and Coat)													
Leaks (Drums, Pipes, Tanks)	▲		▲										
Lining Coal Chutes					▲			▲					
Machinable Repair Material	▲	▲	▲						▲	▲			
Meat & Poultry Plants	▲	▲							▲	▲			
Pipe Elbow Coatings/Linings				▲	▲			▲					
Pulverizers/Mills				▲	▲			▲					
Pump Repairs-Slurry						▲		▲					
Pump Repairs-Water													
Rebuild Worn Threads, Keyways, Metal	▲	▲	▲							▲			
Repairing Engine Blocks	▲	▲											
Shaft Repairs			▲										
Tank Linings				▲	▲								
Tank Repairs (Hole)	▲	▲	▲										
Valve Rebuild/Repairs	▲	▲	▲										
Wet/Damp Surface Bonding			▲										
Prevent Fastener Loosening										▲			
Prevent Bearing Spinout, Lock keyways, Secure Splines												▲	
Seal Metal Pipes & Fittings													▲

	Epoxy Coat™ 7000 AR	Floor Patch™*	Floor Patch™ Ft*	Floor Patch™ Resurfacer	Ultra Quartz™	Deep Pour Grout™	Concrete Crack Repair	Epoxy Coat™ 7000 Non Visc	Floor Grip™
<b>FLOOR REPAIR</b>									
Acid Resistant Coating	▲	▲	▲	▲	▲	▲	▲	▲	▲
Anchoring Bolts in Concrete		▲	▲	▲	▲	▲	▲	▲	▲
Anti-Skid (Floors, Ramps, Docks)									▲
Chemical Containment Coatings	▲	▲	▲	▲	▲	▲	▲	▲	▲
Chocking Equipment									
Coatings (Impact, Abrasion)	▲	▲	▲	▲	▲	▲	▲	▲	▲
Expansion Joints, Cracks		▲	▲	▲	▲	▲	▲	▲	▲
Floors (Hole Filling & Patching)		▲	▲	▲	▲	▲	▲	▲	▲
Leveling Equipment									
Leveling Floors		▲	▲	▲	▲	▲	▲	▲	▲
Meat & Poultry Plants	▲	▲	▲	▲	▲	▲	▲	▲	▲
Metal Coatings	▲	▲	▲	▲	▲	▲	▲	▲	▲
Warehouse Floor Coatings									
Wet/Damp Surface Coatings		▲	▲	▲	▲	▲	▲	▲	▲

	Flexane® 80 Putty	Flexane® High Perf. Putty	Flexane® Fast Cure	Flexane® Fast Cure Liquid	Cable Cast FR	Flexane® Belt Repair Kit	Flexane® 80 Liquid	Flexane® 94 Liquid	Edge & Seal (T-35)	Concrete Crack Repair
<b>RUBBER REPAIR</b>										
Casting Molds, Rubber Parts	▲	▲	▲	▲	▲	▲	▲	▲	▲	▲
Conveyor Belt Repair										
Coatings (Chutes, Hoppers)	▲	▲	▲	▲	▲	▲	▲	▲	▲	▲
Coating (Impact, Abrasion)	▲	▲	▲	▲	▲	▲	▲	▲	▲	▲
Expansion/Control Joints										
Feeder Bowl Coating	▲	▲	▲	▲	▲	▲	▲	▲	▲	▲
Gaskets										
Holding Fixtures										
Metal Coatings										
Moldmaking										
Noise Reduction Coating	▲	▲	▲	▲	▲	▲	▲	▲	▲	▲
Potting Compounds										
Rubber Roll Repair	▲	▲	▲	▲	▲	▲	▲	▲	▲	▲
Re-jacketing Electrical Cable										

**\* NSF LISTED**

**DISCLAIMER:** Devcon makes no warranties, expressed or implied, including warranties of merchantability or fitness for a particular purpose. Under no circumstances shall Devcon be liable for incidental, consequential, or other damages from alleged negligence, breach of warranty, strict liability, tort, contract, or any other theory, arising out of the use or handling of these products.

Questions? Contact Devcon Technical Services:  
**800-933-8266** [www.devcon.com](http://www.devcon.com)



# Look to Devcon® and Permatex® for all your maintenance needs.

**Metal Repair**



**Threadlockers**



**Rubber Repair**



**Gasketing**



**Wear Resistance**



**Thread Sealing**



**Precision Repairs**



**Anti-Seize**



**Permatex®**

**Devcon®**

ITW Devcon  
30 Endicott St.  
Danvers, MA 01923  
800-933-8266  
[www.devcon.com](http://www.devcon.com)