

4TM80

Direct-Drive Tubeaxial Fans

Designed to efficiently move air in medium-length ductwork and operate in any position. Typical applications may include warehouse and industrial ventilation as well as general commercial ventilation.

- UL 705 listed
- Motor, propellers, and housing are shipped assembled
- Totally enclosed, ball bearing motors
- Maximum inlet/ambient air temperature: 104°F
- 2-speed control (No. 1DGZ9) is required for 2-speed models (except No. 4TM84)
- Installation must comply with all local and national safety codes including the National Electrical Code (NEC)

Optional Accessories

- Inlet or outlet guard
- Companion flanges for easy attachment of fan to duct system (sold in pairs)
- Vane sections for improved energy efficiency
- Curb cap and discharge cap for rooftop mounting

FEATURES	BENEFITS
Exhaust or Supply	Flexible to application
May be ducted, non-ducted, or rooftop mounted	Diversity of installation
May be installed vertically or horizontally	Versatile operation
Heavy gauge, steel housing, motor mount, and support bracket coated in charcoal baked enamel finish with UV inhibitors	Rugged Design

Dayton Direct-Drive Tubeaxial Product Features

Steel Tube

charcoal baked enamel coating with UV inhibitors

Steel Motor Support Bracket

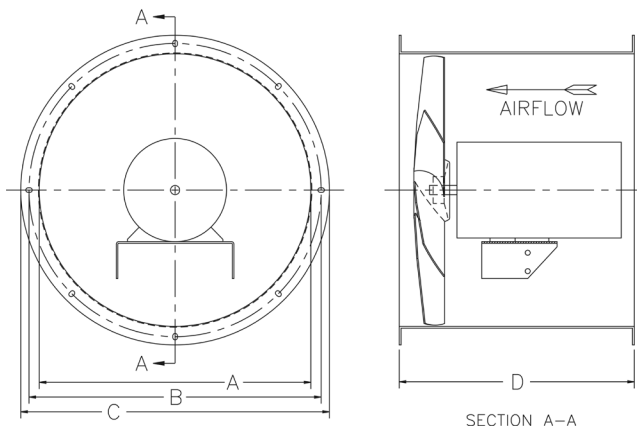
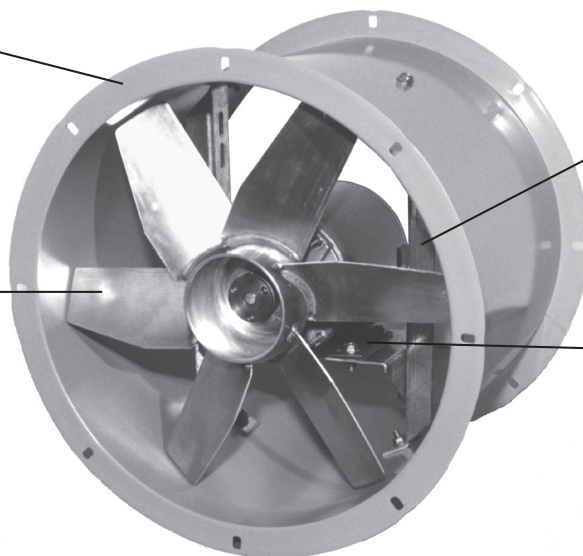
charcoal baked enamel coating with UV inhibitors

Aluminum Propeller

precision balanced

Steel Motor Mount

charcoal baked enamel coating with UV inhibitors



SKU NO.	FAN SIZE	DIMENSIONS IN INCHES				MAX. CFM (@ 0" W.G.)	HP	MAX RPM
		A	B	C	D			
2-Speed Direct-Drive Tubeaxial Fans								
4TM80	12	12 1/4	13 7/16	14 19/32	14	1,627 / 1,079	1/4	1750 / 1160
4TM81	16	16 1/8	17 1/2	18 1/2	14	2,763 / 1,832	1/3	1750 / 1160
4TM82	18	18 1/2	19 7/8	21	16	3,938 / 2,610	1/2	1750 / 1160
4TM83	18	18 1/2	19 7/8	21	16	4,670 / 3,095	3/4	1750 / 1160
4TM84	21	21 5/16	22 19/32	23 7/8	16	6,193 / 4,105	1	1750 / 1160
Single-Speed Direct-Drive Tubeaxial Fans								
4TM85	24	24 1/2	25 13/16	26 7/8	18	8,555	1	1160
2XZH2	30	30 19/32	32 9/16	33 19/32	21	14,792	3	1160

Find it at Grainger.

Call or visit your local branch or go to grainger.com/dayton
for complete product line information.

