

Please read and save these instructions. Read carefully before attempting to assemble, install, operate or maintain the product described. Protect yourself and others by observing all safety information. Failure to comply with instructions could result in personal injury and/or property damage! Retain instructions for future reference.

Dayton® Hydraulic Hand Pallet Trucks

Description

Dayton hand hydraulic pallet trucks are manually operated industrial duty products designed to lift a maximum weight as specified below. Safety features include an overload bypass valve and a pressure compensated flow valve for controlled lowering. A hand-actuated control lever for selecting "raise," "neutral," and "lower" positions is standard. 24L 323 has a Foot & Hand Actuated pump.

Specifications

Up/Down Control.....Hand Actuated
 Front Wheels, per Fork
Entry, Load, Exit (24L323)
N/A (24L322)
 Strokes to Raised Height
13 (24L322)
14(24L323)
 Push Rods..... Square Tube
 Steering radius.....185 degrees
 Load Wheel
1 3/4" x 3.7" (Steel) (24L322)
2.9" x 3.7" (Polyurethane)(24L323)
 Main Whee.....7" x 2" (Polyurethane)

forks — do not concentrate loads at one point, or load one fork more than the other.

- Do not use on inclines or uneven surfaces. Do not allow pallet truck to drop from one floor level to another. Even a drop of one inch results in a "shock", which can bend or break components.
- The pump's piston rod and lifting ram are polished with a hardened-chrome finish to provide maximum seal life and minimize oil leakage. Do not allow these surfaces to be nicked or pitted by abuse. A slight amount of oil on the external part of the piston is normal as well as in all the hydraulic systems. This oil film provides lubrication between the polished surfaces and the seals through which they pass. Do not be alarmed at a trace of oil, even on new units.
- Do not put hands or feet under forks. Always remove load before making



Figure 1

General Safety Information

- Carefully read all manuals included with this product before putting into service. Inspect the pallet truck for transit damage before operation. Be thoroughly familiar with the controls and the proper use of the pallet truck.
- Never overload the pallet truck. Stay within the rated capacity of the truck.
- Distribute the load evenly on the

- repairs. Completely immobilize pallet truck before working on components that might pinch fingers or hands if movement were allowed.
- Never allow anyone to ride a pallet truck "scooter style". All heavy material handling equipment should be operated with the utmost regard for the safety of the operator and others.
- Never leave a loaded pallet truck unattended. Always lower forks when trucking is completed.
- Avoid abrasive or corrosive environments and/or materials that may tend to spill onto pallet truck parts.

Specifications

| Model | Load Cap. | Max. Fork Height | Min. Fork Height | Fork Length | Width Across Forks | Fork Width | Overall Length | Weight |
|--------|-----------|------------------|------------------|-------------|--------------------|------------|----------------|--------|
| 24L322 | 5000Lbs* | 6 1/4" | 1 3/4" | 48" | 27" | 7" | 63 1/2" | 230Lbs |
| 24L323 | 5500Lbs* | 7 3/4" | 2 7/8" | 48" | 27" | 6 5/16" | 63 3/8" | 160Lbs |

*WARNING: MAXIMUM LOAD CAPACITY RATING IS FOR EVENLY DISTRIBUTED AND CENTERED LOAD.

Dayton® Hydraulic Hand Pallet Trucks

Assembly and Commissioning

Your Dayton pallet truck comes fully assembled. Inspect the pallet truck for transit damage before operation. Refer to the replacement parts illustration and list in identifying parts. If damage is evident, notify delivering carrier immediately and file necessary claims.

If you have purchased a wooden box of pallet truck, some assembly is required. Some tools that will be needed to assemble this are a hammer, pliers, and a spanner.

NOTE: The number of draw-bar and pump should be the same.

NOTE: Attach handle from behind pallet truck.

1. Remove the three bolts (D611) from the handle bracket (D151/L319A).

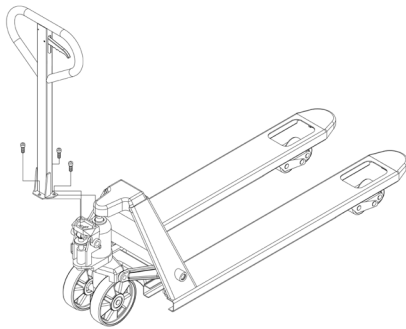


Figure 2

2. Set handle (D610/L110B) on the bracket (D151/L319A).
3. Feeding the chain through the hole in the center of the bracket (D151/L319A) and the bracket shaft (D153/L331A) install the handle (D610/L110B) onto the bracket. Insert the three bolts (D611) through the handle into the bracket and tighten securely. Using a screwdriver, carefully pry up the lever plat (D132/L345) and insert the adjusting bolt (D614) into the "fork slot" on the lever

plat, keeping the adjusting nut (D615) on the underside of the lever plat.

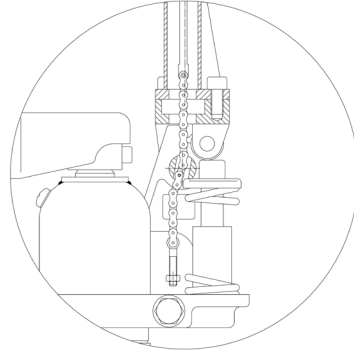


Figure 3

NOTE: Keep the adjusting nut on the under side of the lever plat.

Operation

The three position control lever is operated as follows (see Figure 4):

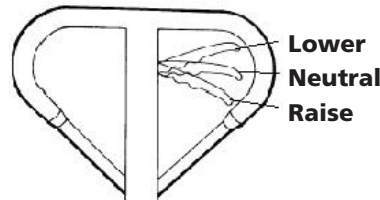


Figure 4

TO RAISE

Insert the forks into the pallet. Move the control lever into RAISE position. With an up/down motion of the handle, pump the pallet jack to the desired height.

NEUTRAL

When finished raising the pallet truck, move control lever into NEUTRAL position.

Move the pallet truck to desired location.

TO LOWER

Move the control lever into the LOWER position until desired height has been reached.

NOTE: The lever should automatically move into the NEUTRAL position when

released. If this does not happen, adjust accordingly.

ADJUSTMENT

Test each of the functions by pumping the handle with the control lever in each of the three positions. If the functions do not operate as listed, perform the required adjustments as noted below. Over time, normal use and vibration may cause your pallet truck to require additional periodic adjustments.

For 24L322:

1. If the forks elevate while pumping in the NEUTRAL position, turn the adjusting nut (D615) on the adjusting bolt (D614) clockwise until pumping action does not raise the forks and the NEUTRAL position functions properly.
2. If the forks descend while pumping in the NEUTRAL position, turn the nut (D615) counter-clockwise until the forks do not lower.
3. If the forks do not descend when the control handle (D608) is in the LOWER position, turn the nut (D615) clockwise until raising the control handle lowers the forks. Then check the NEUTRAL position according to item 1 and 2 to be sure the nut (D615) is in the proper position.
4. If the forks do not elevate while pumping in the LIFT position, turn the nut (D615) counter-clockwise until the forks elevate while pumping in the LIFT position. Then check the LOWER and NEUTRAL position according to item 1, 2 and 3.

For 24L323:

1. If the forks do not elevate while pumping in the RAISE position, turn the adjusting nut (D615) and/or set screw (D133) counterclockwise until the forks elevate while pumping in the RAISE position.

Models 24L322 and 24L323

ADJUSTMENT(Continued)

2. If the forks do not descend when the control lever is in the LOWER position, turn the adjusting nut and/or set screw clockwise until the control lever lowers the forks properly.

3. If the forks elevate while pumping in the NEUTRAL position, turn the adjusting nut and/or set screw clockwise until pumping action does not raise the forks and the NEUTRAL position functions properly.

4. If the forks descend while lever is in the NEUTRAL position, turn the adjusting nut and/or set screw counterclockwise until the forks do not lower.

After making an adjustment, be sure to check all functions to be sure they haven't been affected **before operating the unit.**

Maintenance

▲ WARNING *Remove loads before performing inspection or maintenance work.*

Troubleshooting Chart

| Symptom | Possible Cause(s) | Corrective Action |
|---|---|---|
| Forks don't raise, don't raise fully, or raise slowly | 1. Low hydraulic fluid level or impurities in oil. 2. Control lever is out of adjustment 3. Load is too heavy. Overload release valve is being activated 4. Temperature is too low and the hydraulic oil has become too thick | 1. Add approved hydraulic fluid or change oil as noted on page 3 (in Maintenance section) 2. Follow the procedure for adjusting the control lever on page 2 3. Reduce load 4. Move truck to a warmer location |
| Forks don't lower or don't lower fully | 1. Obstacle located under truck, in fork mechanism, etc. 2. Control lever is out of adjustment 3. Fork was left in a raised position for an extended time causing exposed piston rod to rust 4. The piston rod or pump is deformed due to over-loading or uneven loading | 1. Use caution removing the obstacle 2. Follow the procedure for adjusting the control lever on page 2 3. Keep fork in the lowest position when not in use and keep piston rod well lubricated 4. Replace the piston rod or pump |
| Forks lower without putting the control lever in the "lower" position | 1. Oil impurities are preventing the release valve from fully closing 2. Some hydraulic components or seals are cracked or worn 3. Control lever is out of adjustment | 1. Drain and replace hydraulic fluid with approved fluid as noted on page 3 (in Maintenance section) 2. Inspect and replace components as needed 3. Follow the procedure for adjusting the control lever on page 2 |
| Leaks oil | 1. Worn or damaged seals 2. Other cracked or worn parts | 1. Replace seals 2. Replace damaged parts |

All bushings and bearings have been lubricated at the factory. To increase their life, regular maintenance is recommended. Use the appropriate grease for the application and lubricate each grease fitting every 6 months. Harsh environments may require more frequent maintenance.

DAILY

Visually check for oil leaks; structural deformation of arms, forks, or any other component; and unusual noise or binding of the lifting mechanism. Do not use if any of these conditions exist.

MONTHLY

1. Check hydraulic oil level (more frequently for high use applications).
2. Verify that all labels are in place and in good condition.
3. Clean off dirt and debris.

ANNUALLY

Change oil (more frequently if color has substantially darkened or feels gritty).

NOTE: If hydraulic oil is milky white in color, water is in the hydraulic system.

Change the hydraulic oil immediately.

ADDING HYDRAULIC OIL TO PUMP RESERVOIR

NOTE: Use standard hydraulic oil / jack oil, SAE grade 10 (ISO Viscosity grade 32).

▲ CAUTION *Pallet truck is heavy, use proper safety equipment and ask for help lifting the truck.*

1. Ensure forks are in lowered position.
2. Lay pallet truck on either side. Position drain plug of hydraulic cylinder upward.
3. Remove the screw plug.
4. Add hydraulic oil until level of oil is at bottom of hole.
5. Replace drain plug and return the truck to an upright position.

▲ WARNING *Do not attempt to repair pallet trucks unless you are trained and authorized to do so. Serious injury could result.*

▲ WARNING *These products may not be altered in any way without written permission from the manufacturer.*

For Repair Parts, call 1-800-323-0620

24 hours a day – 365 days a year

Please provide following information:

- Model number
- Serial number (if any)
- Part description and number as shown in parts list

ENGLISH

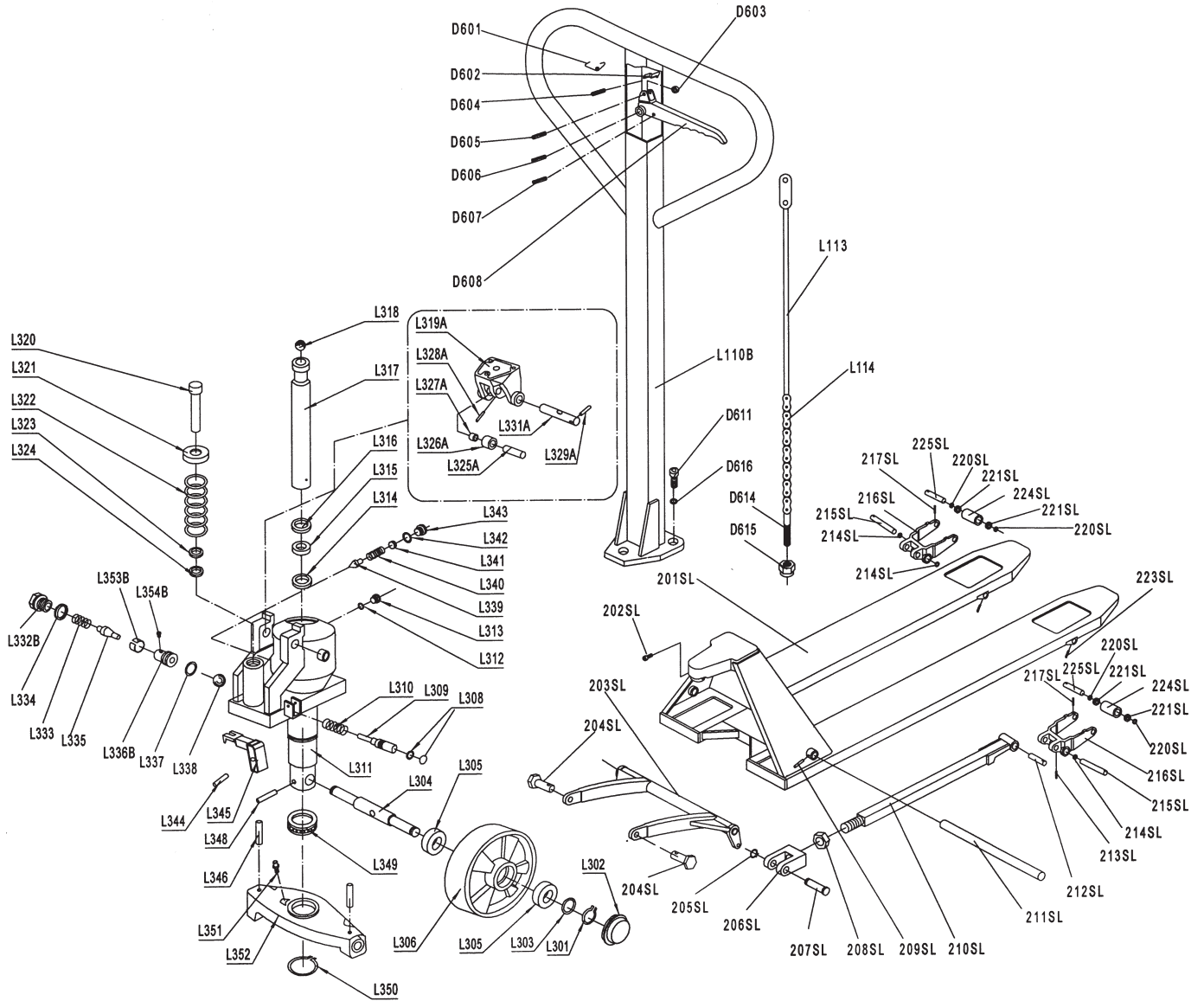


Figure 5 – Repair Parts Illustration for Hydraulic Hand Pallet Trucks: for 24L322

Repair Parts List for Hydraulic Hand Pallet Trucks: 24L322

| No. | Part No. | Description | No. | Part No. | Description | Qty. |
|-----|----------|--------------------------------------|----------|----------|------------------------------------|----------|
| 1 | D601 | Spring | 1 | 9 D609 | D609 Pull Board | 1 |
| 2 | D602 | Blade Spring | 1 | 10 L110B | L110B Handle | 1 |
| 3 | D603 | Roller | 1 | 11 D611 | D611 Screw | 3 |
| 4 | D604 | Elastic Pin | 1 | 12 D612 | D612 Chain | 1 |
| 5 | D605 | Elastic Pin | 1 | 13 | | |
| 6 | D606 | Elastic Pin | 1 | 14 D614 | D614 Adjusting bolt | 1 |
| 7 | D607 | Elastic Pin | 1 | 15 D615 | D615 Adjust nut | 1 |
| 8 | D608 | Control handle | 1 | 16 D616 | D616 Elastic washer | 3 |
| 17 | L301 | ** Retaining Ring, 20 | 2 | 41 L326A | ▲ Pressure Roller | 1 |
| 18 | L302 | D124 Hub Cap | 2 | 42 L327A | ▲ Bushing | 1 |
| 19 | L303 | ** Washer, 20 | 2 | 43 L328A | ▲ Elastic Pin | 1 |
| 20 | L304 | MH24L32201G Shaft of wheel | 1 | 44 L329A | ** Elastic Pin 5*35 | 1 |
| 21 | L305 | ** Bearing, 6204 | 4 | 45 L331A | MH24L32206G Axle with hole | 1 |
| 22 | L306 | MH24L32202G Steering Wheel | 2 | 46 L332B | * Plug bolt | 1 |
| | | MH24L32203G Release valve kit | 1 | 47 L333 | * Spring | 1 |
| 23 | L308 | ▲ O-ring | 2 | 48 L334 | * Seal washer | 1 |
| 24 | L309 | ▲ Release valve | 1 | 49 L335 | * Spindle pin of valve | 1 |
| 25 | L310 | ▲ Spring | 1 | 50 L336B | * Seat of valve | 1 |
| 26 | L311 | * Pump Body | 1 | 51 L337 | * O - ring | 1 |
| 27 | L312 | D157 Seal Washer | 1 | 52 L338 | ** Steel ball, 11/32" | 1 |
| 28 | L313 | D149 Bolt | 1 | 53 L339 | * Safe Valve Pin | 1 |
| 29 | L314 | * Y-seal | 1 | 54 L340 | * Spring | 1 |
| 30 | L315 | * Y-seal | 1 | 55 L341 | * Adjusting Bolt | 1 |
| 31 | L316 | * Wiper | 1 | 56 L342 | * O-ring | 1 |
| 32 | L317 | * Lift Piston Rod | 1 | 57 L343 | * Plug Bolt | 1 |
| 33 | L318 | ** Steel Ball, 3/4" | 1 | 58 L344 | ** Elastic pin, 5*30 | 1 |
| | | MH24L32204G Pump piston kit | 1 | 59 L345 | MH24L32207G Lever Plat | 1 |
| 34 | L320 | ▲ Pump piston | 1 | 60 L346 | ** Elastic pin, 5*40 | 2 |
| 35 | L321 | ▲ Cap | 1 | 61 L348 | ** Elastic pin, 8*40 | 1 |
| 36 | L322 | ▲ Spring | 1 | 62 L349 | MH24L32208G Thrust Bearing | 1 |
| 37 | L323 | ▲ Wiper | 1 | 63 L350 | ** Retaining ring, 52 | 1 |
| 38 | L324 | ▲ Y-seal | 1 | 64 L351 | ** Grease cup, M6 | 1 |
| | | MH24L32205G Bracket kit | 1 | 65 L352 | MH24L32209G Thrust plate | 1 |
| 39 | L319A | ▲ Bracket | 1 | 66 L353B | * Sleeve | 1 |
| 40 | L325A | ▲ Axle of Roller | 1 | 67 L354B | ** Screw, M2x2 | 1 |
| 68 | 201SL | * Fork Frame | 1 | 80 213SL | ** Elastic Pin, 5*26 | 2 |
| 69 | 202SL | ** Bolt, M8x16 | 1 | 81 214SL | ** Washer, 16 | 4 |
| 70 | 203SL | MH24L32210G Rock-Arm | 1 | 82 215SL | MH24L32215G Shaft | 2 |
| 71 | 204SL | MH24L32211G Shaft | 2 | 83 216SL | MH24L32216G Frame of Roller | 2 |
| 72 | 205SL | ** Retaining Ring, 16 | 2 | 84 217SL | ** Elastic Pin, 5*35 | 2 |
| 73 | 206SL | MHG209G Joint | 2 | 85 220SL | ** Washer, 17 | 4 |
| 74 | 207SL | MHG210G Pin | 2 | 86 223SL | MH223SLG Elastic Pin | 2 |
| 75 | 208SL | MHG211G Nut | 2 | | MH24L32217G Load roller kit | 2 |
| 76 | 209SL | ** Elastic Pin, 5x38 | 1 | 87 221SL | ▲ Bearing | 4 |
| 77 | 210SL | MH24L32212G Pushing Rod | 2 | 88 224SL | ▲ Roller | 1 |
| 78 | 211SL | MH24L32213G Long Shaft | 1 | 86 225SL | MH24L32218G Shaft for Roller | 2 |
| 79 | 212SL | MH24L32214G Shaft for pushing rod | 2 | | | |

(▲) Available as part of a kit only.

(*) Not available as repair part.

(**) Common hardware, not offered as a replacement part.

Repair Parts List for Hydraulic Hand Pallet Trucks: 24L323

| No. | Part No. | Description | Qty. | No. | Part No. | Description | Qty. | | |
|-------|----------|-------------|--------------------------|-----|----------|-------------|------------------------------|-------------------------|---|
| 1 | D601 | D601 | Spring | 1 | 9 | D609 | D609 | Pull Board | 1 |
| 2 | D602 | D602 | Blade Spring | 1 | 10 | D610 | D610 | Handle | 1 |
| 3 | D603 | D603 | Roller | 1 | 11 | D611 | D611 | Screw | 3 |
| 4 | D604 | D604 | Elastic Pin | 1 | 12 | D612 | D612 | Chain | 1 |
| 5 | D605 | D605 | Elastic Pin | 1 | 13 | D613 | D613 | Pin | 1 |
| 6 | D606 | D606 | Elastic Pin | 1 | 14 | D614 | D614 | Adjusting bolt | 1 |
| 7 | D607 | D607 | Elastic Pin | 1 | 15 | D615 | D615 | Adjust nut | 1 |
| 8 | D608 | D608 | Control handle | 1 | 16 | D616 | D616 | Elastic washer | 3 |
| <hr/> | | | | | | | | | |
| 17 | D101 | D101 | Pump Piston Rod | 1 | 51 | D137 | D137 | Adjusting Bolt | 1 |
| 18 | D102 | D102 | Washer | 1 | 52 | D139 | D139 | Spindle of Safety Valve | 1 |
| 19 | D103 | D103 | Spring | 1 | 53 | D140 | D140 | Spring | 1 |
| 20 | D104 | D104 | Dust ring | 1 | 54 | D141 | D141 | O - ring | 1 |
| 21 | D105 | D105 | Y - seal | 1 | 55 | D142 | D142 | Screw | 1 |
| 22 | D106B | D106B | Screw | 1 | 56 | D143 | D143 | O - ring | 1 |
| 23 | D107B | D107B | O - ring | 1 | 57 | D144 | D144 | Y - seal | 1 |
| 24 | D108 | D108 | Spring | 1 | 58 | D145 | D145 | Elastic pin | 1 |
| 25 | D109 | D109 | Spindle of Pumping Valve | 1 | 59 | D146 | D146 | Steel ball | 1 |
| 26 | D110B | D110B | Seat of Pumping Valve | 1 | 60 | D147 | D147 | Piston rod | 1 |
| 27 | D111B | D111B | O - ring | 1 | 61 | D148 | D148 | Dust ring | 1 |
| 28 | D112 | D112 | Steel ball | 1 | 62 | D149 | D149 | Screw | 1 |
| 29 | D113 | D113 | Base pump | 1 | 63 | D150 | D150 | Shaft | 1 |
| 30 | D115 | D115 | Elastic Pin | 1 | 64 | D151F | MH24L32301G | Bracket | 1 |
| 31 | D116 | D116 | Steering wheel | 2 | 65 | D152 | D152 | Pressure | 1 |
| 32 | D117D | D117D | Shaft of Steering Wheel | 1 | 66 | D153 | D153 | Shaft | 1 |
| 33 | D118 | D118 | Thrust plate | 1 | 67 | D155 | D155 | Elastic pin | 1 |
| 34 | D119 | D119 | Oil - holder | 1 | 68 | D156 | D156 | Bushing | 1 |
| 35 | D120 | D120 | Retaining Ring | 1 | 69 | D157 | D157 | Seal washer | 1 |
| 36 | D121 | D121 | Cover of Bearing | 1 | 70 | D158 | D158 | Bushing | 2 |
| 37 | D122 | D122 | Bearing | 1 | 71 | D159B | D159B | Sleeve | 1 |
| 38 | D123 | D123 | Elastic pin | 2 | 72 | D160B | D160B | Screw | 1 |
| 39 | D124 | D124 | Dust cover | 2 | | | MH24L32302G Pedal kit | 1 | |
| 40 | D125D | D125D | Retaining ring | 2 | 73 | D161F | ▲ | Pedal | 1 |
| 41 | D126D | D126D | Tab washer | 2 | 74 | D162F | ▲ | Rubber sleeve | 1 |
| 42 | D127 | D127 | Bearing | 4 | 75 | D163F | ▲ | Spring | 1 |
| 43 | D129 | D129 | Spring | 1 | 76 | D164F | ▲ | Steel ball | 1 |
| 44 | D130 | D130 | Strike pin | 1 | 77 | D165F | ▲ | Elastic pin | 1 |
| 45 | D131 | D131 | O - ring | 2 | 78 | D166F | ▲ | bushing | 2 |
| 46 | D132 | D132 | Lever plat | 1 | 79 | D167F | ▲ | Shaft | 1 |
| 47 | D133 | D133 | Adjusting screw | 1 | 80 | D168F | ▲ | Lock ring | 2 |
| 48 | D134 | D134 | Nut | 1 | 81 | D169F | ▲ | Axle | 1 |
| 49 | D135 | D135 | O - ring | 1 | 82 | D170F | ▲ | Bracket for pedal | 1 |
| 50 | D136 | D136 | Axle Sleeve | 1 | | | | | |
| <hr/> | | | | | | | | | |
| 83 | D201 | D201 | Screw | 1 | 98 | D216 | D216 | Elastic Pin | 2 |
| 84 | D202 | D202 | Oil - holder | 1 | 99 | D218 | D218 | Fork frame | 1 |
| 85 | D203 | D203 | Rock - arm | 1 | 100 | D219 | D219 | Washer | 4 |
| 86 | D204 | D204 | Elastic Pin | 1 | 101 | D220 | D220 | Bearing | 4 |
| 87 | D205 | D205 | Retaining ring | 2 | 102 | D223 | D223 | Elastic Pin | 2 |
| 88 | D206D | D206D | Joint | 2 | 103 | D224 | D224 | Bushing | 4 |
| 89 | D207 | D207 | Shaft | 2 | 104 | D225 | D225 | Bushing | 2 |
| 90 | D208D | D208D | Pushing rod | 2 | 105 | D226 | D226 | Bolt | 2 |
| 91 | D209D | D209D | Nut | 2 | 106 | D227 | D227 | Enter roller | 2 |
| 92 | D210 | D210 | Pin | 2 | 107 | D228 | D228 | Nut | 2 |
| 93 | D211 | D211 | Shaft | 1 | 108 | D229 | D229 | Loading roller | 2 |
| 94 | D212 | D212 | Shaft | 2 | 109 | D230 | D230 | Shaft for roller | 2 |
| 95 | D213 | D213 | Elastic Pin | 2 | 110 | D231 | D231 | Washer | 2 |
| 96 | D214 | D214 | Shaft | 2 | 111 | D232 | D232 | Washer | 4 |
| 97 | D215 | D215 | Frame of roller | 2 | | | | | |

(▲) Available as part of a kit only.

Dayton® Hydraulic Hand Pallet Trucks

LIMITED WARRANTY

DAYTON ONE-YEAR LIMITED WARRANTY. DAYTON® Hydraulic Hand Pallet Trucks, MODELS COVERED IN THIS MANUAL, ARE WARRANTED BY DAYTON ELECTRIC MFG. CO. (DAYTON) TO THE ORIGINAL USER AGAINST DEFECTS IN WORKMANSHIP OR MATERIALS UNDER NORMAL USE FOR ONE YEAR AFTER DATE OF PURCHASE. ANY PART WHICH IS DETERMINED TO BE DEFECTIVE IN MATERIAL OR WORKMANSHIP AND RETURNED TO AN AUTHORIZED SERVICE LOCATION, AS DAYTON DESIGNATES, SHIPPING COSTS PREPAID, WILL BE, AS THE EXCLUSIVE REMEDY, REPAIRED OR REPLACED AT DAYTON'S OPTION. FOR LIMITED WARRANTY CLAIM PROCEDURES, SEE "PROMPT DISPOSITION" BELOW. THIS LIMITED WARRANTY GIVES PURCHASERS SPECIFIC LEGAL RIGHTS WHICH VARY FROM JURISDICTION TO JURISDICTION.

LIMITATION OF LIABILITY. TO THE EXTENT ALLOWABLE UNDER APPLICABLE LAW, DAYTON'S LIABILITY FOR CONSEQUENTIAL AND INCIDENTAL DAMAGES IS EXPRESSLY DISCLAIMED. DAYTON'S LIABILITY IN ALL EVENTS IS LIMITED TO AND SHALL NOT EXCEED THE PURCHASE PRICE PAID.

WARRANTY DISCLAIMER. A DILIGENT EFFORT HAS BEEN MADE TO PROVIDE PRODUCT INFORMATION AND ILLUSTRATE THE PRODUCTS IN THIS LITERATURE ACCURATELY; HOWEVER, SUCH INFORMATION AND ILLUSTRATIONS ARE FOR THE SOLE PURPOSE OF IDENTIFICATION, AND DO NOT EXPRESS OR IMPLY A WARRANTY THAT THE PRODUCTS ARE MERCHANTABLE, OR FIT FOR A PARTICULAR PURPOSE, OR THAT THE PRODUCTS WILL NECESSARILY CONFORM TO THE ILLUSTRATIONS OR DESCRIPTIONS. EXCEPT AS PROVIDED BELOW, NO WARRANTY OR AFFIRMATION OF FACT, EXPRESSED OR IMPLIED, OTHER THAN AS STATED IN THE "LIMITED WARRANTY" ABOVE IS MADE OR AUTHORIZED BY DAYTON.

Technical Advice and Recommendations, Disclaimer. Notwithstanding any past practice or dealings or trade custom, sales shall not include the furnishing of technical advice or assistance or system design. Dayton assumes no obligations or liability on account of any unauthorized recommendations, opinions or advice as to the choice, installation or use of products.

Product Suitability. Many jurisdictions have codes and regulations governing sales, construction, installation, and/or use of products for certain purposes, which may vary from those in neighboring areas. While attempts are made to assure that Dayton products comply with such codes, Dayton cannot guarantee compliance, and cannot be responsible for how the product is installed or used. Before purchase and use of a product, review the product applications, and all applicable national and local codes and regulations, and be sure that the product, installation, and use will comply with them.

Certain aspects of disclaimers are not applicable to consumer products; e.g., (a) some jurisdictions do not allow the exclusion or limitation of incidental or consequential damages, so the above limitation or exclusion may not apply to you; (b) also, some jurisdictions do not allow a limitation on how long an implied warranty lasts, consequently the above limitation may not apply to you; and (c) by law, during the period of this Limited Warranty, any implied warranties of implied merchantability or fitness for a particular purpose applicable to consumer products purchased by consumers, may not be excluded or otherwise disclaimed.

Prompt Disposition. A good faith effort will be made for prompt correction or other adjustment with respect to any product which proves to be defective within limited warranty. For any product believed to be defective within limited warranty, first write or call dealer from whom the product was purchased. Dealer will give additional directions. If unable to resolve satisfactorily, write to Dayton at address below, giving dealer's name, address, date, and number of dealer's invoice, and describing the nature of the defect. Title and risk of loss pass to buyer on delivery to common carrier. If product was damaged in transit to you, file claim with carrier.

Manufactured for Dayton Electric Mfg. Co., 100 Grainger Parkway, Lake Forest, IL 60045 USA