

Dayton Sludge Pumps

PUMPS technical data sheet



Submersible Sludge pumps are designed for fluid transfer applications where the fluid contains a high percentage of solids or has high viscosity. These pumps are typically used in mining and manufacturing applications. They are designed with hardened materials that resist wear from the solids suspended in the unit. They are designed to operate continuously and typically are controlled with a pump control panel.

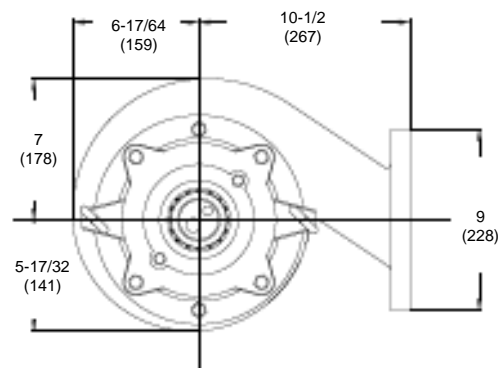
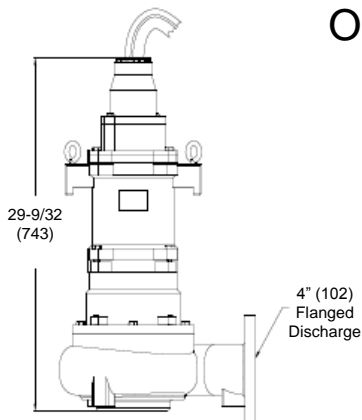


12U574
7½ HP, Cast Iron
Submersible Sludge Pump

HP	7.5
Voltage	230V
Phase	Single
Frequency	60 Hz
Run Amps	58.2A
Start Amps	130A
RPM	1750
Motor Type	Capacitor Start / Capacitor Run

Overload Protection	None - Requires Control Panel
Motor Shaft Material	Stainless Steel
Motor Housing Material	Cast Iron
Motor Duty	Continuous
Motor End Bearing	Single Row Ball
Pump End Bearing	Single Row Ball
Lubrication	Oil Lubricated
Discharge	4 Inch Flanged
Volute Material	Cast Iron
Base Material	Cast Iron
Impeller Type	2-Vane Closed
Impeller Material	Cast Iron
Hardware Material	Stainless Steel
O-rings	Buna-N
Seal Type	Dual Mechanical
Seal Materials	Silicon Carbide/Ceramic/Buna-N
Operation	Manual Operation
Power Cord	6/4 SOW, 20' (6.1m), Stripped Leads
Max. Solids Handling	3" (76mm) spherical
Max. Water Temperature	104°F (40°C)
Designed Fluid Environment	Sludge / Wastewater

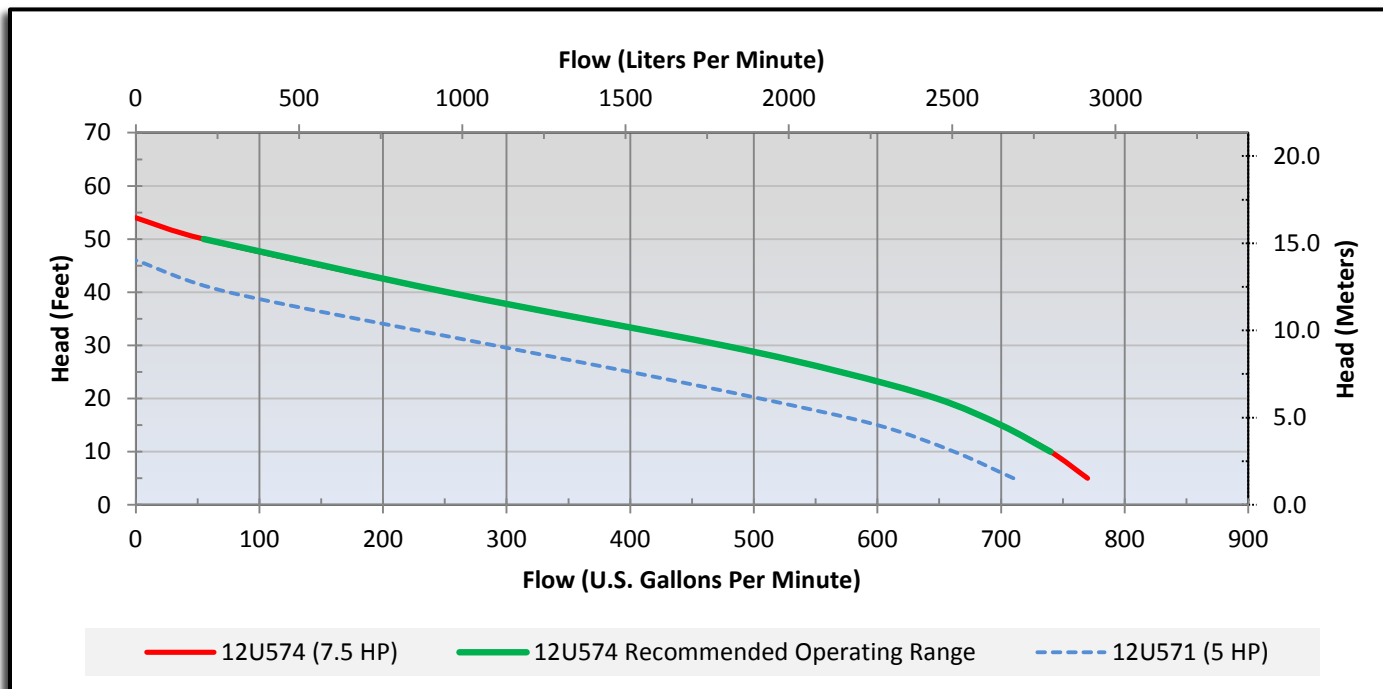
Outline Dimensions



Performance Data

Head	Feet	5	10	15	20	25	30	40	50	54
	Meters	1.5	3.1	4.6	6.1	7.6	9.1	12.2	15.2	16.5
Flow Rate	GPM	770	740	700	648	570	475	252	55	0
	LPM	2915	2801	2650	2453	2158	1798	954	208	0

Performance Chart



WARNING: Use only with nonflammable liquids compatible with pump component materials and in nonflammable/nonexplosive atmospheres.

Call or visit your local branch or go to grainger.com/dayton for complete product line information

Find it at Grainger.

© 2013 W.W. Grainger, Inc.

