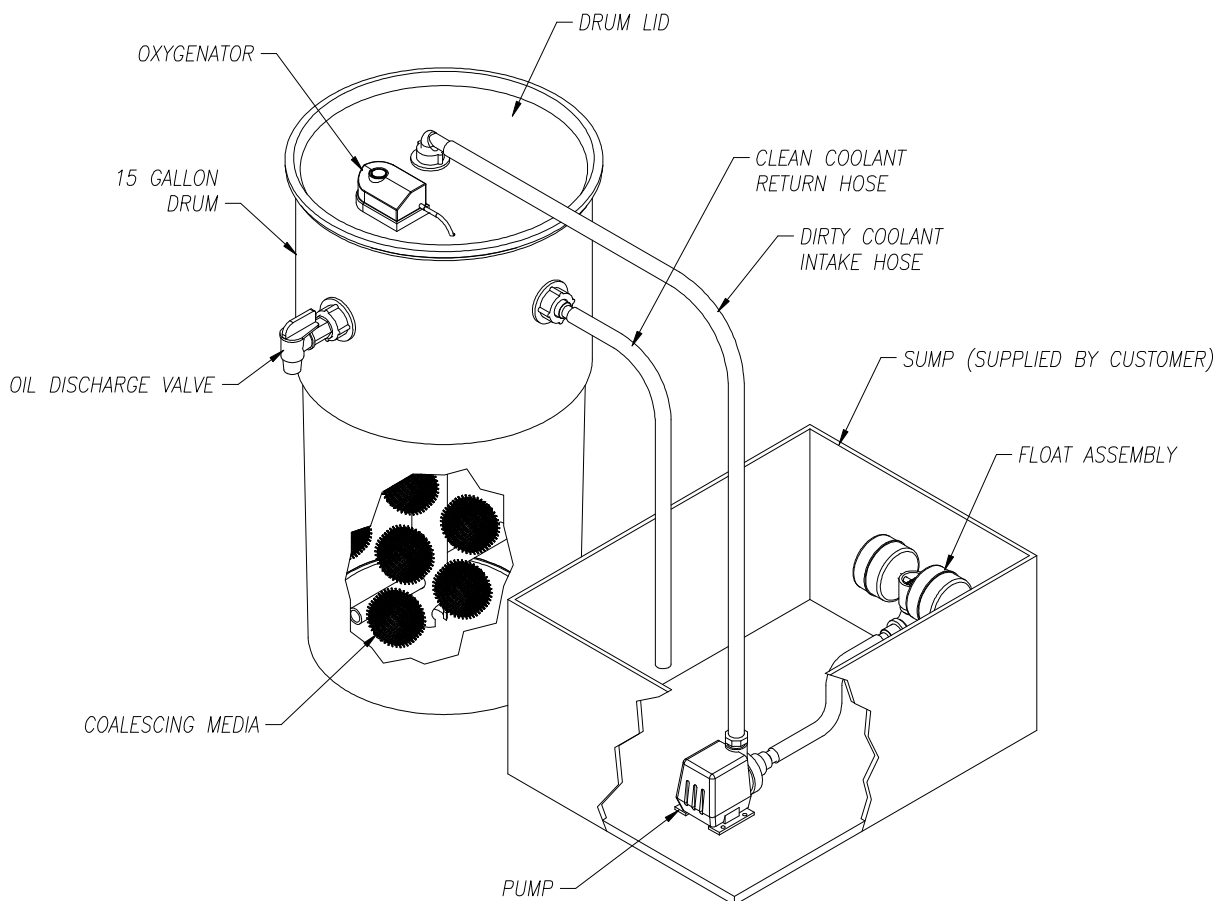


**ABANAKI**  
CORPORATION

17387 Munn Road  
Chagrin Falls, OH 44023  
Phone: (440) 543-7400  
Fax: (440) 543-7404  
**1-800-358-SKIM (7546)**  
**www.abanaki.com**

## Instruction Manual

# Coolscer™ Coolant Refresher



### **CAUTION!**

Read this instruction manual carefully before installing the Coolscer™ Coolant Refresher. If something is unclear, please consult us. It shall be the users responsibility to follow all local safety rules.



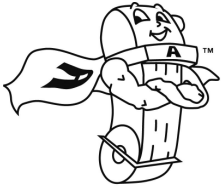
**ABANAKI**  
CORPORATION  
17387 Munn Road  
Chagrin Falls, OH 44023  
Phone: (440) 543-7400  
Fax: (440) 543-7404  
**1-800-358-SKIM (7546)**  
[www.abanaki.com](http://www.abanaki.com)

# Cooler<sup>™</sup> Coolant Refresher

## Installation/Parts List

### COOLESCER<sup>™</sup> COOLANT REFRESHER SETUP:

- Step 1.** Read these instructions and become familiar with all components.
- Step 2.** Remove drum cover retaining clamp. (Item 3)
- Step 3.** Carefully remove packing material from drum. **\*CAUTION\*** - The packaging contains loose parts.
- Step 4.** Remove loose parts from packaging.
- Step 5.** Install ½" 90° hose barb fitting (Item 21) into fitting on drum cover. **(See Fig. 1)**.
- Step 6.** Install ¾" straight hose barb fitting (Item 20) into drum fitting marked "COOLANT RETURN". **(See Fig. 1)**
- Step 7.** Install faucet valve (Item 19) into drum fitting marked "OIL DISCHARGE". **(See Fig. 1)**
- Step 8.** Install ¾" hose (Item 18) on "COOLANT RETURN" hose barb (Item 20).
- Step 9.** Identify end of ½" hose (Item 16) which contains the flow control orifice (Item 17). Place this end over the 90° hose barb (Item 21) on drum cover. Place opposite end over discharge fitting of pump (Item 11).
- Step 10.** Place other end of flexible hose (Item 15) over hose barb on float assembly (Item 12).
- Step 11.** Place aerator hose (Item 14) up through hole in cover and push open end over outlet of air pump (Item 13).
- Step 12.** Replace cover on drum, allowing aerator diffuser to hang free in drum, and making sure inlet straight hose barb (Item 22) on bottom of drum cover, enters standpipe (Item 5) **(See Fig. 2)** Alignment marks are provided on edge of cover and on drum to assist in alignment. **(See Fig. 2)**
- Step 13.** Replace drum cover retaining clamp (Item 3).
- Step 14.** Unit is now ready to be charged with fresh coolant. Place pump/float assembly and return hose in container of fresh coolant.
- Step 15.** Connect to 120VAC supply and allow pump to fill unit, approximately 10 gallons. NOTE: Allow 3-5 minutes for pump to prime. Unit is fully charged when coolant begins to flow out return line.
- Step 16.** Disconnect power. Unit is ready for service.



**ABANAKI**  
CORPORATION

17387 Munn Road  
Chagrin Falls, OH 44023  
Phone: (440) 543-7400  
Fax: (440) 543-7404  
**1-800-358-SKIM (7546)**  
[www.abanaki.com](http://www.abanaki.com)

# Coolscer™ Coolant Refresher

## Installation/Parts List

### COOLESCER™ COOLANT REFRESHER OPERATING:

- Place pump/float assembly in coolant sump, making sure float is floating. **NOTE:** Unit is designed to operate in minimum coolant depth of 6 inches, and maximum depth of 12 inches.
- Place coolant return line in or over sump.
- Connect to 120VAC.
- When coolant is sufficiently clean, disconnect power, remove pump/float assembly and return hose from sump.
- When unit is not in use, run aerator pump to agitate and aerate coolant in unit. This will reduce bacterial action within the unit.
- Weekly check for accumulated oil by placing a container under the oil discharge valve and opening the valve. If oil is observed, start the unit and open valve while unit is operating. When oil flow changes to coolant, close valve.
- All cords and hoses should be inspected weekly for damage or signs of excessive wear. Any damaged or worn parts should be replaced.
- If returned coolant appears dirty, unit should be disassembled and cleaned. To clean, open drum, pour off coolant, lift out media container, and clean with a pressure washer. Clean out drum and reassemble, making sure media container is properly oriented. The container is properly oriented when the retainer angles (Items 9 & 10) are evenly straddling the coolant return line assembly (Item 6).
- Replace cover and clamp being sure all components are properly located as mentioned previously.
- If coolant fails to flow, check for obstructions in hoses, fittings, and pump. Also check power source.



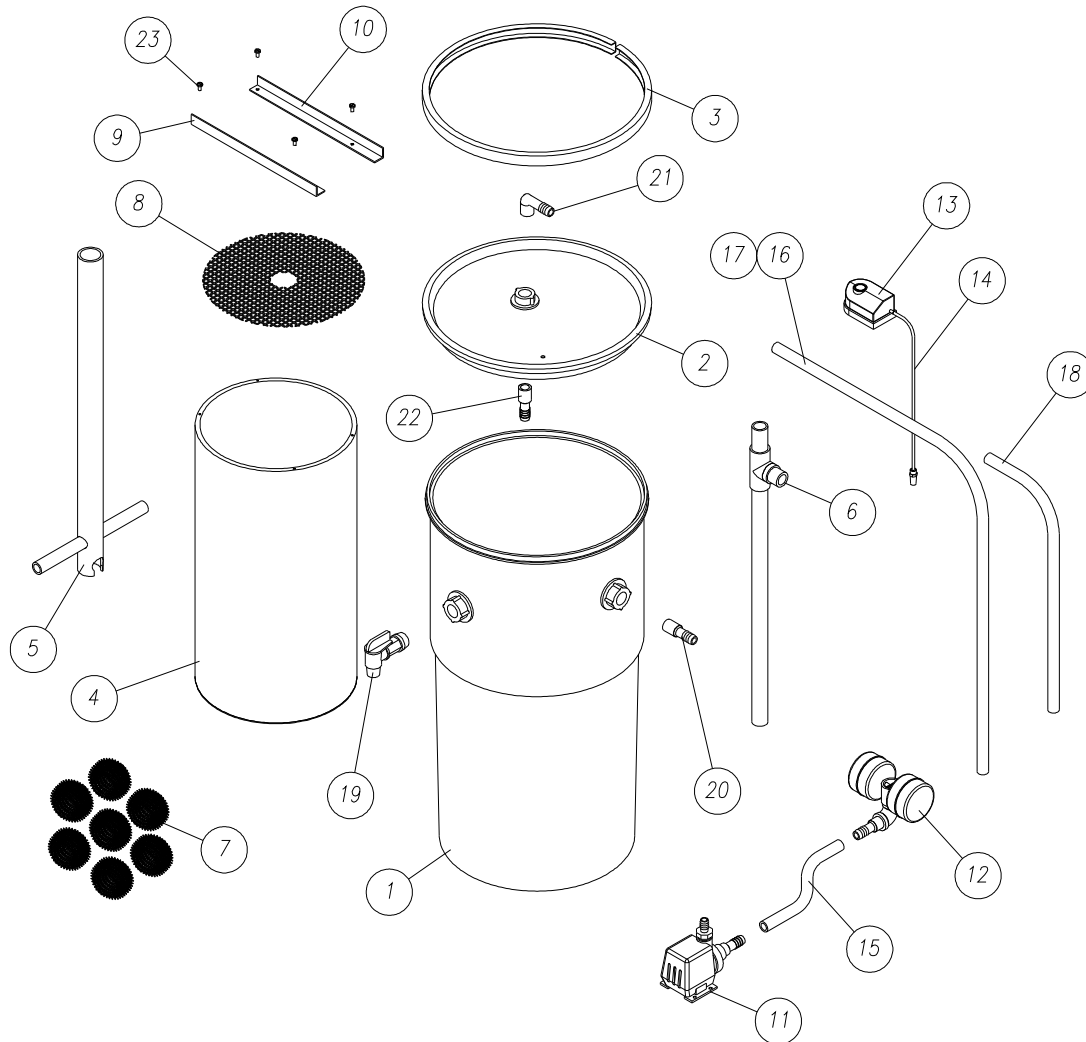


**ABANAKI**  
CORPORATION

17387 Munn Road  
Chagrin Falls, OH 44023  
Phone: (440) 543-7400  
Fax: (440) 543-7404  
**1-800-358-SKIM (7546)**  
[www.abanaki.com](http://www.abanaki.com)

# Coolscer™ Coolant Refresher

## Installation/Parts List



Item	Qty.	Description	Item	Qty.	Description
1	1	Coolant Drum	13	1	Oxygenator
2	1	Drum Lid	14	1	Oxygenator Hose w/Diffuser
3	1	Drum Lid Retaining Ring	15	1	Pump to Float 1/2" x 15" Lg. Flexible Hose
4	1	Media Container	16	1	Pump to Drum 1/2" x 6' Lg. Hose
5	1	Inlet Stand Pipe	17	1	Flow Control – 11/64" (not shown)
6	1	Coolant Return Line Assembly	18	1	Clean Coolant Return Hose 3/4" x 5' Lg.
7	1 cu. Ft.	Media	19	1	3/4" Plastic Shutoff
8	1	Media Retainer Mesh	20	1	3/4" Straight Barbed Hose Fitting
9	1	Mesh Retainer Fastening Angle - Left	21	1	1/2" 90° Barbed Hose Fitting
10	1	Mesh Retainer Fastening Angle - Right	22	1	1/2" Straight Barbed Hose Fitting
11	1	Pump	23	4	#6 x 3/8" Lg. Pan Head
12	1	Float Assembly			



**ABANAKI**  
CORPORATION  
17387 Munn Road  
Chagrin Falls, OH 44023  
Phone: (440) 543-7400  
Fax: (440) 543-7404  
**1-800-358-SKIM (7546)**  
[www.abanaki.com](http://www.abanaki.com)

# Cooler™ Coolant Refresher

## Installation/Parts List

